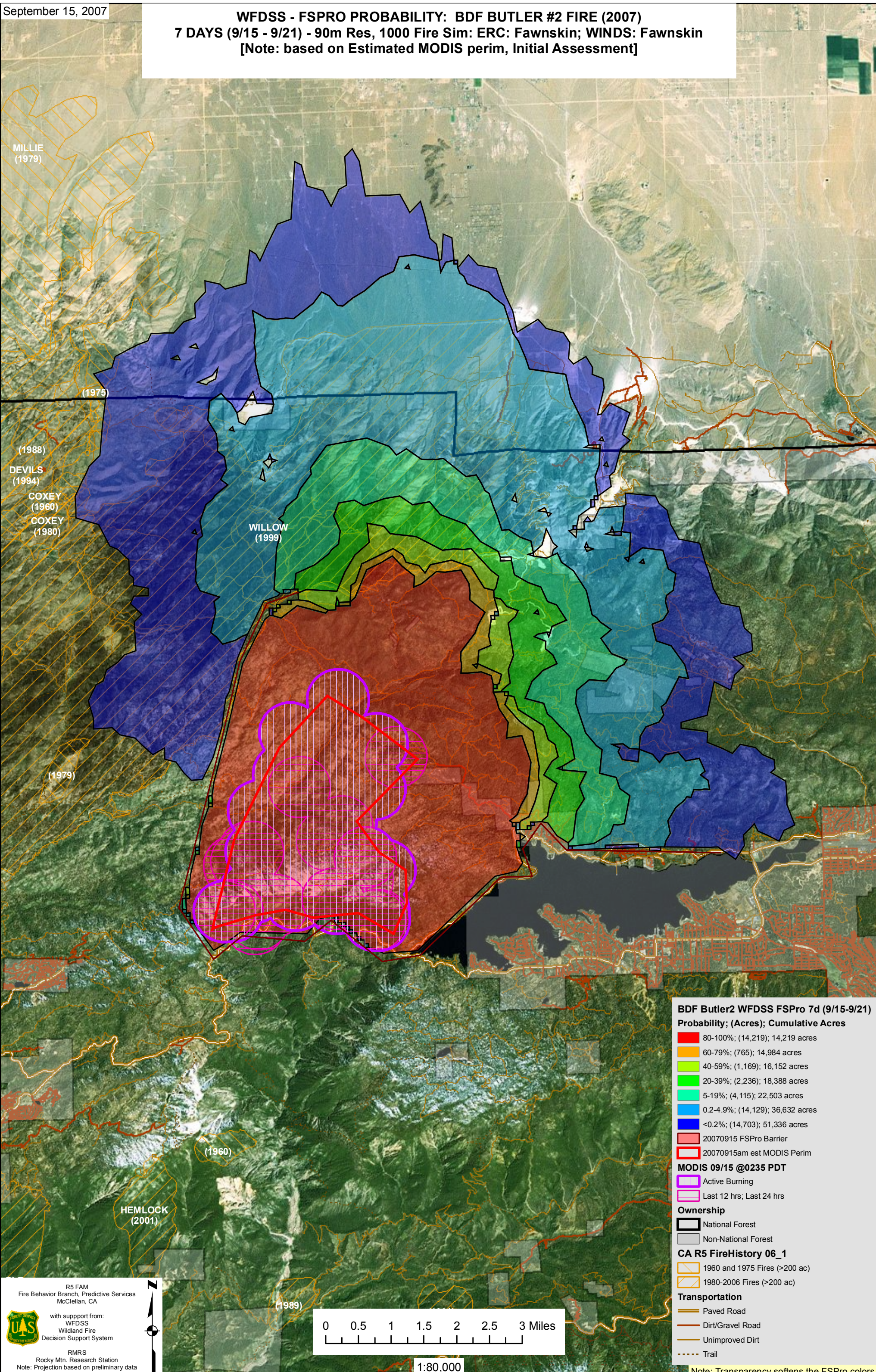


September 15, 2007

WFDSS - FSPRO PROBABILITY: BDF BUTLER #2 FIRE (2007) 7 DAYS (9/15 - 9/21) - 90m Res, 1000 Fire Sim: ERC: Fawnskin; WINDS: Fawnskin [Note: based on Estimated MODIS perim, Initial Assessment]



MILLIE
(1979)

(1975)

(1988)

DEVILS
(1994)

COXEY
(1960)

COXEY
(1980)

WILLOW
(1999)

(1979)

(1960)

HEMLOCK
(2001)

(1989)

BDF Butler2 WFDSS FSPro 7d (9/15-9/21)
Probability; (Acres); Cumulative Acres

- 80-100%; (14,219); 14,219 acres
- 60-79%; (765); 14,984 acres
- 40-59%; (1,169); 16,152 acres
- 20-39%; (2,236); 18,388 acres
- 5-19%; (4,115); 22,503 acres
- 0.2-4.9%; (14,129); 36,632 acres
- <0.2%; (14,703); 51,336 acres

20070915 FSPro Barrier
 20070915am est MODIS Perim

MODIS 09/15 @0235 PDT

- Active Burning
- Last 12 hrs; Last 24 hrs

Ownership

- National Forest
- Non-National Forest

CA R5 FireHistory 06_1

- 1960 and 1975 Fires (>200 ac)
- 1980-2006 Fires (>200 ac)

Transportation

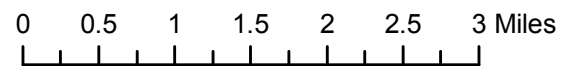
- Paved Road
- Dirt/Gravel Road
- Unimproved Dirt
- Trail

Note: Transparency softens the FSPro colors

R5 FAM
 Fire Behavior Branch, Predictive Services
 McClellan, CA

with support from:
 WFDSS
 Wildland Fire
 Decision Support System

RMRS
 Rocky Mtn. Research Station
 Note: Projection based on preliminary data



1:80,000