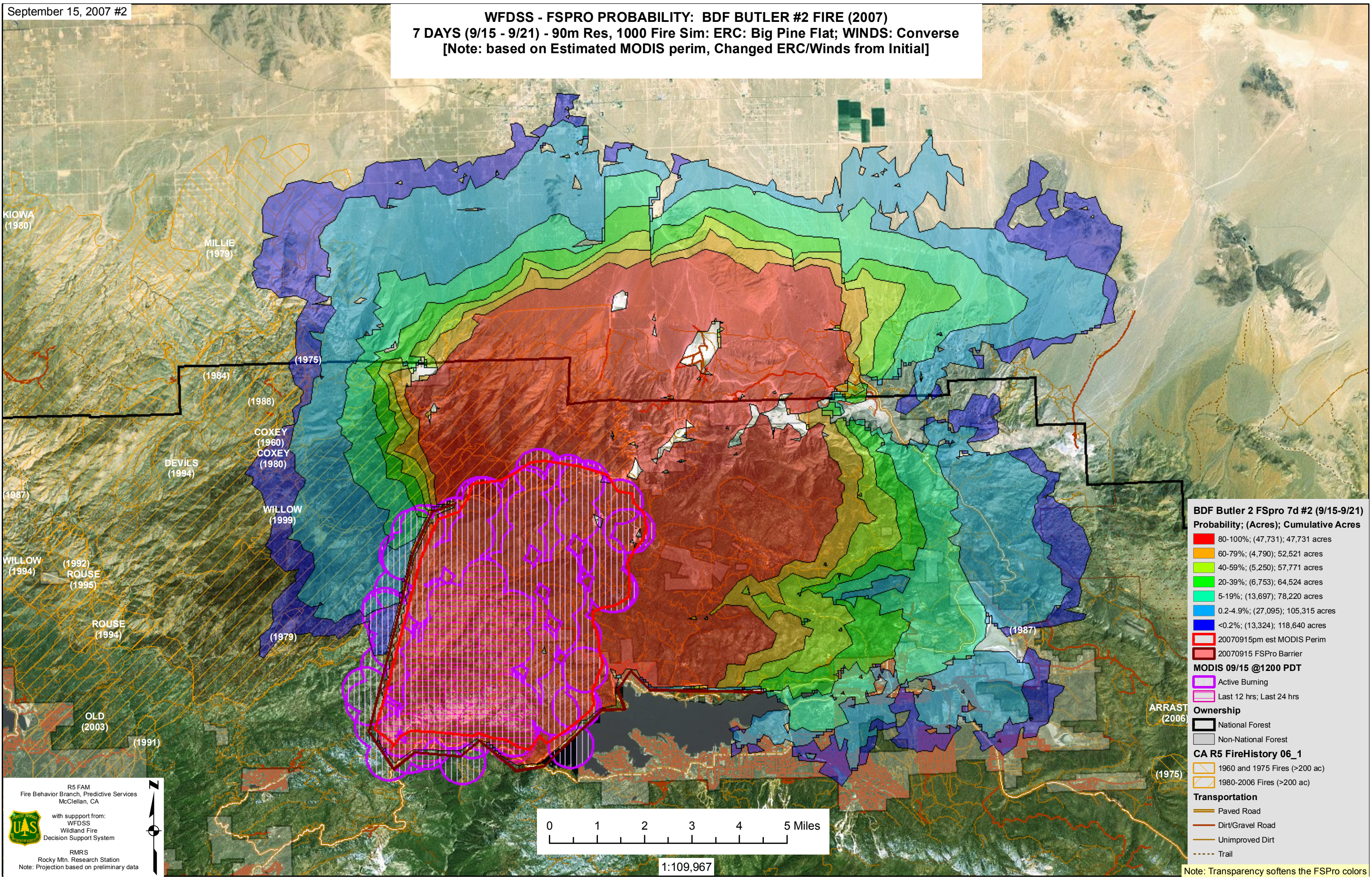


WFDSS - FSPRO PROBABILITY: BDF BUTLER #2 FIRE (2007)
7 DAYS (9/15 - 9/21) - 90m Res, 1000 Fire Sim: ERC: Big Pine Flat; WINDS: Converse
[Note: based on Estimated MODIS perim, Changed ERC/Winds from Initial]



BDF Butler 2 FSpro 7d #2 (9/15-9/21)
Probability; (Acres); Cumulative Acres

- 80-100%; (47,731); 47,731 acres
- 60-79%; (4,790); 52,521 acres
- 40-59%; (5,250); 57,771 acres
- 20-39%; (6,753); 64,524 acres
- 5-19%; (13,697); 78,220 acres
- 0.2-4.9%; (27,095); 105,315 acres
- <0.2%; (13,324); 118,640 acres

20070915pm est MODIS Perim
20070915 FSPro Barrier

MODIS 09/15 @1200 PDT

- Active Burning
- Last 12 hrs; Last 24 hrs

Ownership

- National Forest
- Non-National Forest

CA R5 FireHistory 06_1

- 1960 and 1975 Fires (>200 ac)
- 1980-2006 Fires (>200 ac)

Transportation

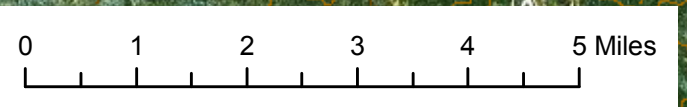
- Paved Road
- Dirt/Gravel Road
- Unimproved Dirt
- Trail

Note: Transparency softens the FSPro colors

R5 FAM
Fire Behavior Branch, Predictive Services
McClellan, CA

with support from:
WFDSS
Wildland Fire
Decision Support System

RMRS
Rocky Mtn. Research Station
Note: Projection based on preliminary data



1:109,967