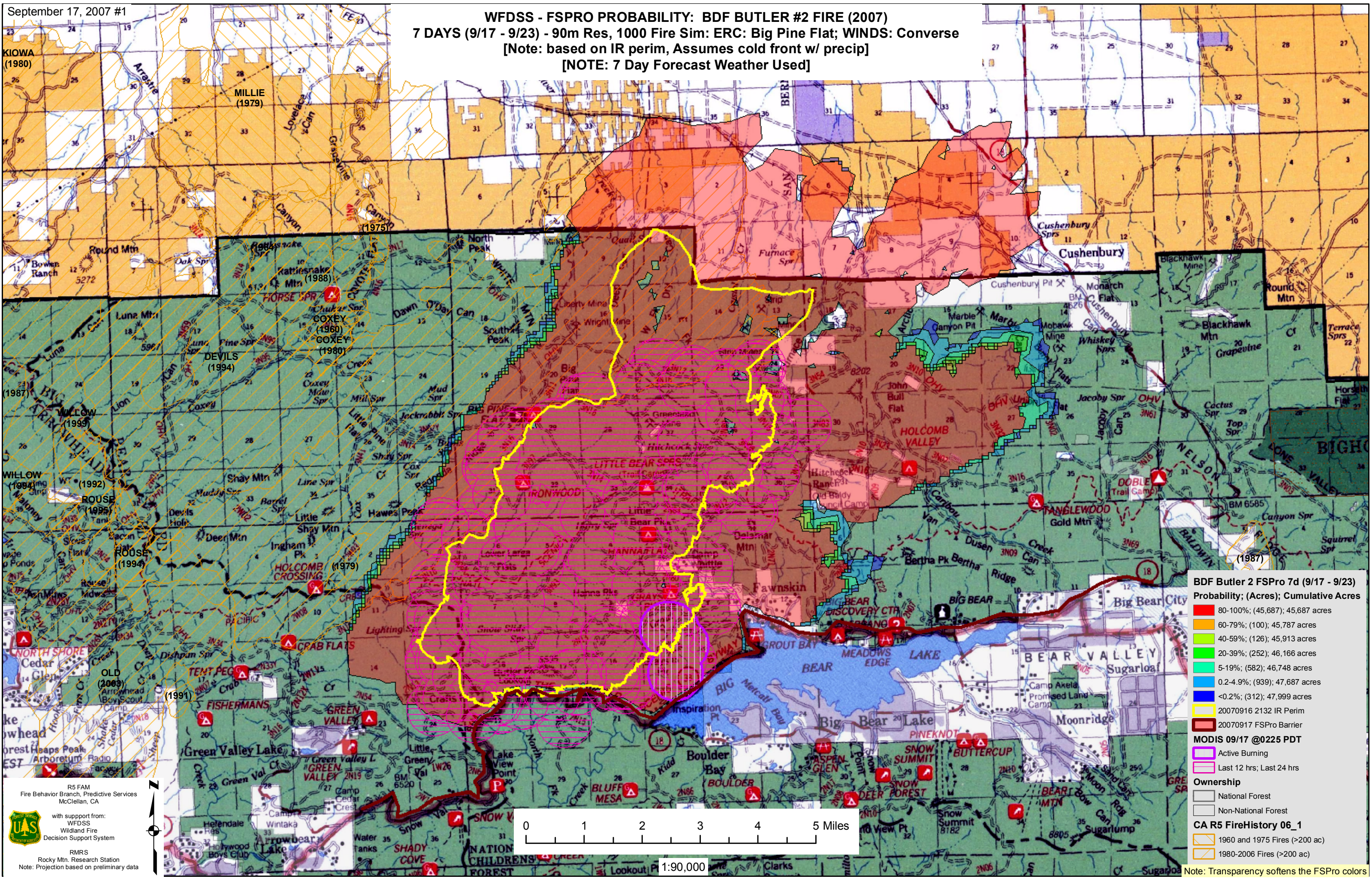


WFDSS - FSPRO PROBABILITY: BDF BUTLER #2 FIRE (2007) 7 DAYS (9/17 - 9/23) - 90m Res, 1000 Fire Sim: ERC: Big Pine Flat; WINDS: Converse [Note: based on IR perm, Assumes cold front w/ precip] [NOTE: 7 Day Forecast Weather Used]



BDF Butler 2 FSPro 7d (9/17 - 9/23)
Probability; (Acres); Cumulative Acres

- 80-100%; (45,687); 45,687 acres
- 60-79%; (100); 45,787 acres
- 40-59%; (126); 45,913 acres
- 20-39%; (252); 46,166 acres
- 5-19%; (582); 46,748 acres
- 0.2-4.9%; (939); 47,687 acres
- <0.2%; (312); 47,999 acres
- 20070916 2132 IR Perim
- 20070917 FSPRO Barrier

MODIS 09/17 @0225 PDT

- Active Burning
- Last 12 hrs; Last 24 hrs

Ownership

- National Forest
- Non-National Forest

CA R5 FireHistory 06_1

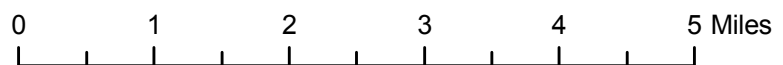
- 1960 and 1975 Fires (>200 ac)
- 1980-2006 Fires (>200 ac)

Note: Transparency softens the FSPro colors

R5 FAM
Fire Behavior Branch, Predictive Services
McClellan, CA

with support from:
WFDSS
Wildland Fire
Decision Support System

RMRS
Rocky Mtn. Research Station
Note: Projection based on preliminary data



1:90,000