

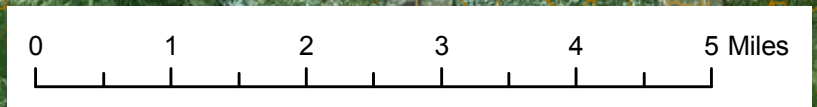
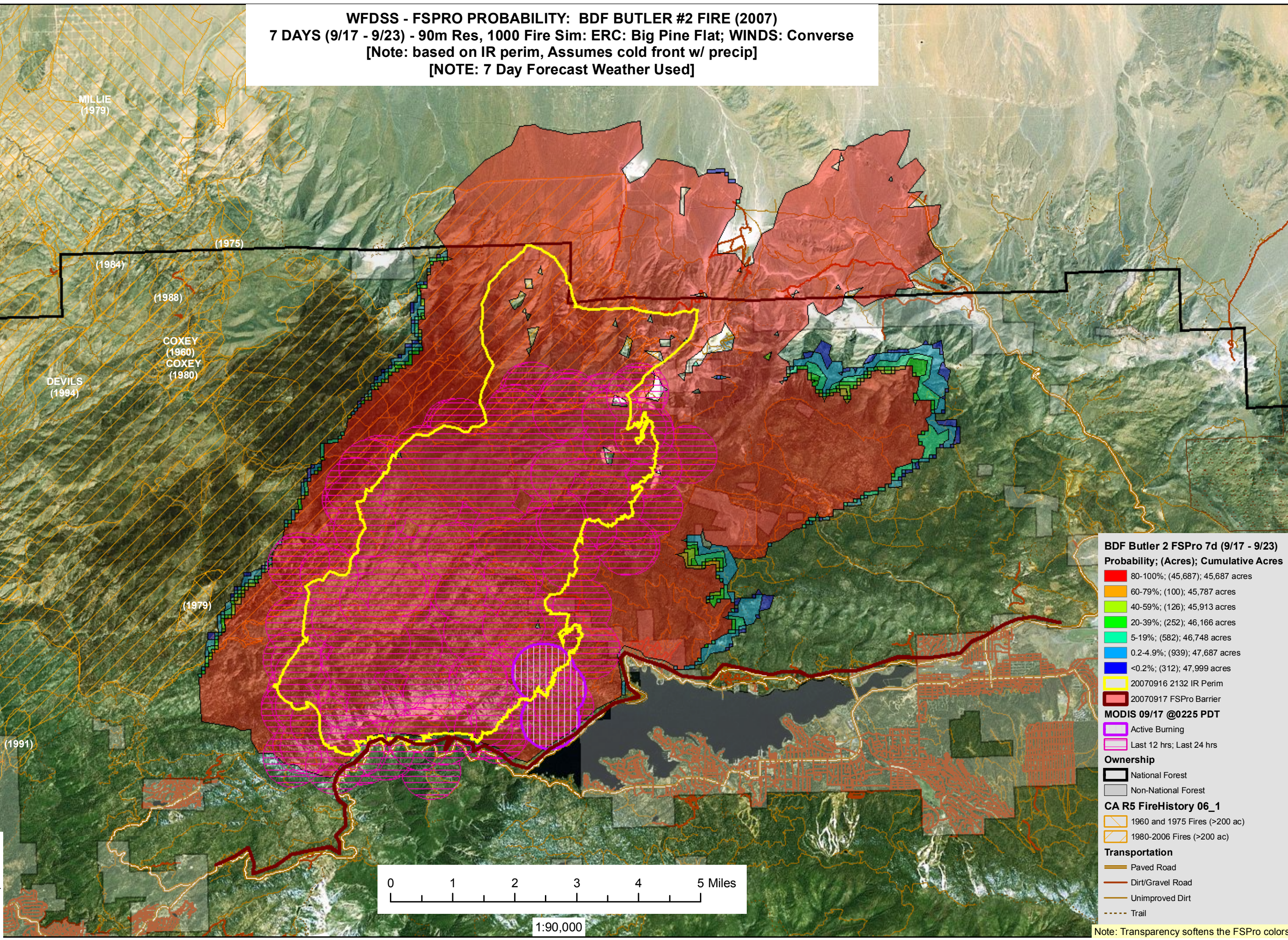
WFDSS - FSPRO PROBABILITY: BDF BUTLER #2 FIRE (2007)
7 DAYS (9/17 - 9/23) - 90m Res, 1000 Fire Sim: ERC: Big Pine Flat; WINDS: Converse
[Note: based on IR perim, Assumes cold front w/ precip]
[NOTE: 7 Day Forecast Weather Used]

KIOWA (1980)
MILLIE (1979)
(1975)
(1984)
(1988)
COXEY (1960)
COXEY (1980)
DEVILS (1994)
(1987)
WILLOW (1999)
WILLOW (1994)
(1992)
ROUSE (1995)
ROUSE (1994)
(1979)
OLD (2003)
(1991)

R5 FAM
Fire Behavior Branch, Predictive Services
McClellan, CA

with support from:
WFDSS
Wildland Fire
Decision Support System

RMRS
Rocky Mtn. Research Station
Note: Projection based on preliminary data



1:90,000

BDF Butler 2 FSPro 7d (9/17 - 9/23)
Probability; (Acres); Cumulative Acres

- 80-100%; (45,687); 45,687 acres
- 60-79%; (100); 45,787 acres
- 40-59%; (126); 45,913 acres
- 20-39%; (252); 46,166 acres
- 5-19%; (582); 46,748 acres
- 0.2-4.9%; (939); 47,687 acres
- <0.2%; (312); 47,999 acres

20070916 2132 IR Perim
20070917 FSPro Barrier

MODIS 09/17 @0225 PDT

- Active Burning
- Last 12 hrs; Last 24 hrs

Ownership

- National Forest
- Non-National Forest

CA R5 FireHistory 06_1

- 1960 and 1975 Fires (>200 ac)
- 1980-2006 Fires (>200 ac)

Transportation

- Paved Road
- Dirt/Gravel Road
- Unimproved Dirt
- Trail

Note: Transparency softens the FSPro colors