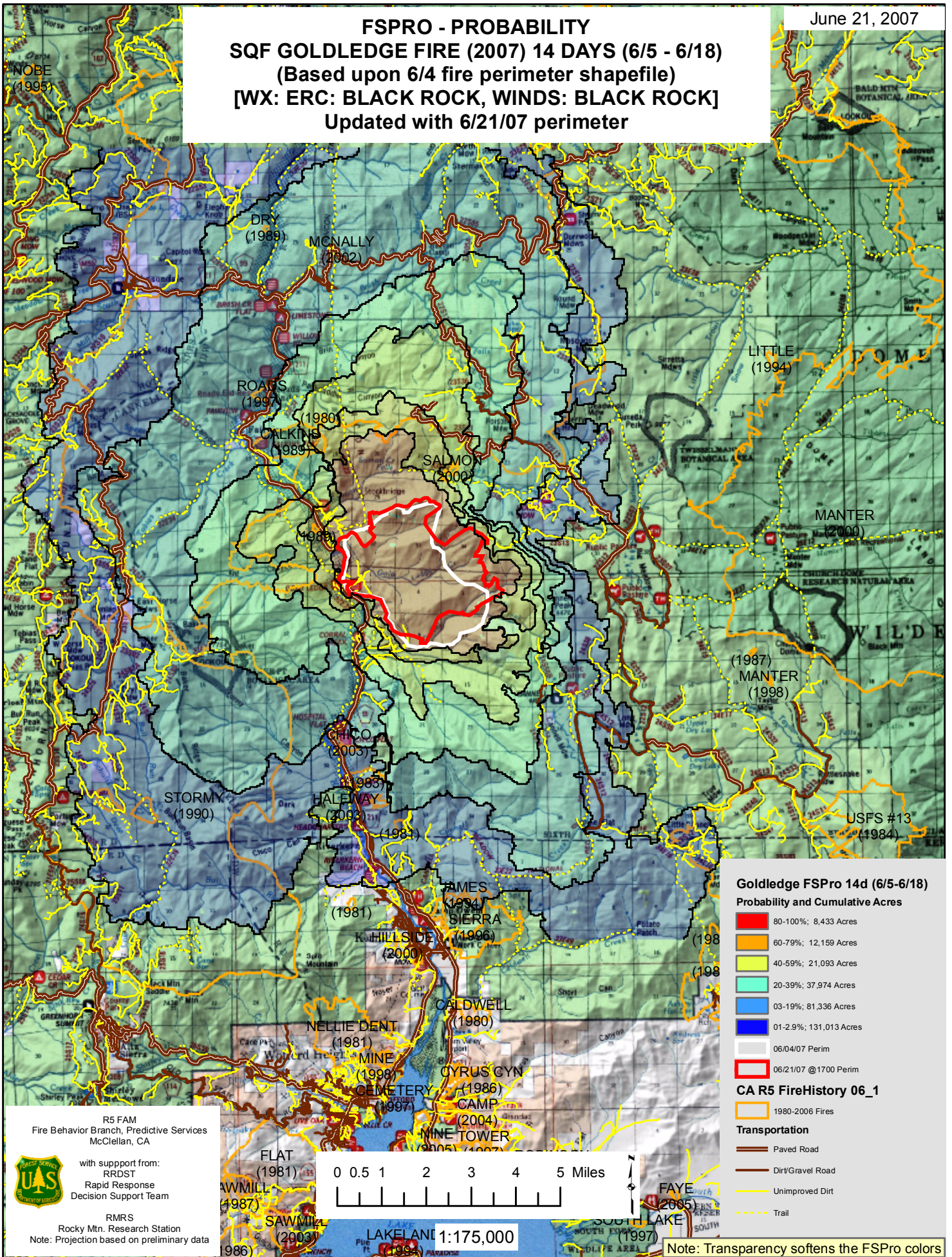


June 21, 2007

FSPRO - PROBABILITY
SQF GOLDLEDGE FIRE (2007) 14 DAYS (6/5 - 6/18)
 (Based upon 6/4 fire perimeter shapefile)
[WX: ERC: BLACK ROCK, WINDS: BLACK ROCK]
 Updated with 6/21/07 perimeter



Goldledge FSPro 14d (6/5-6/18)

Probability and Cumulative Acres

- 80-100%; 8,433 Acres
- 60-79%; 12,159 Acres
- 40-59%; 21,093 Acres
- 20-39%; 37,974 Acres
- 03-19%; 81,336 Acres
- 01-2.9%; 131,013 Acres
- 06/04/07 Perim
- 06/21/07 @1700 Perim

CA R5 FireHistory 06_1

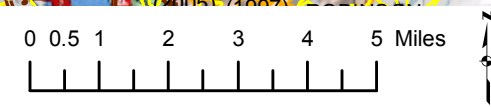
- 1980-2006 Fires
- Transportation**
- Paved Road
- Dirt/Gravel Road
- Unimproved Dirt
- Trail

Note: Transparency softens the FSPro colors

R5 FAM
 Fire Behavior Branch, Predictive Services
 McClellan, CA

with support from:
 RRDST
 Rapid Response
 Decision Support Team

RMRS
 Rocky Mtn. Research Station
 Note: Projection based on preliminary data



Scale: 1:175,000