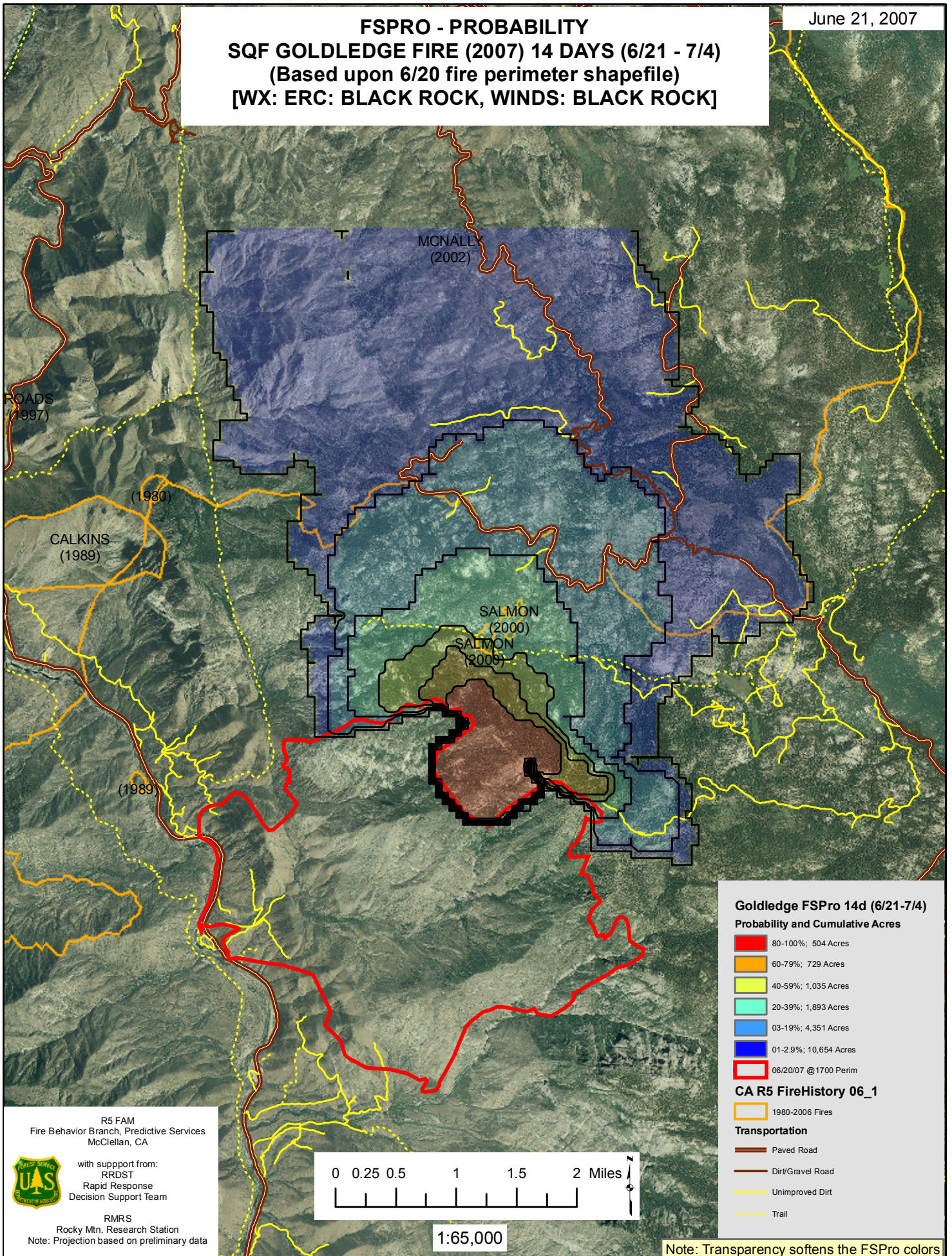


June 21, 2007

**FSPRO - PROBABILITY**  
**SQF GOLDFEDGE FIRE (2007) 14 DAYS (6/21 - 7/4)**  
**(Based upon 6/20 fire perimeter shapefile)**  
**[WX: ERC: BLACK ROCK, WINDS: BLACK ROCK]**



**Goldledge FSPro 14d (6/21-7/4)**  
**Probability and Cumulative Acres**

- 80-100%; 504 Acres
- 60-79%; 729 Acres
- 40-59%; 1,035 Acres
- 20-39%; 1,893 Acres
- 03-19%; 4,351 Acres
- 01-2.9%; 10,654 Acres
- 06/20/07 @ 1700 Perim

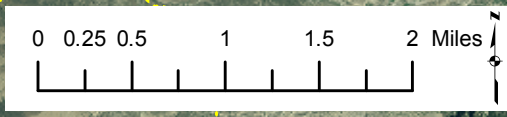
**CA R5 FireHistory 06\_1**

- 1980-2006 Fires
- Paved Road
- Dirt/Gravel Road
- Unimproved Dirt
- Trail

R5 FAM  
Fire Behavior Branch, Predictive Services  
McClellan, CA

with support from:  
RRDST  
Rapid Response  
Decision Support Team

RMRS  
Rocky Mtn. Research Station  
Note: Projection based on preliminary data



1:65,000

Note: Transparency softens the FSPro colors