

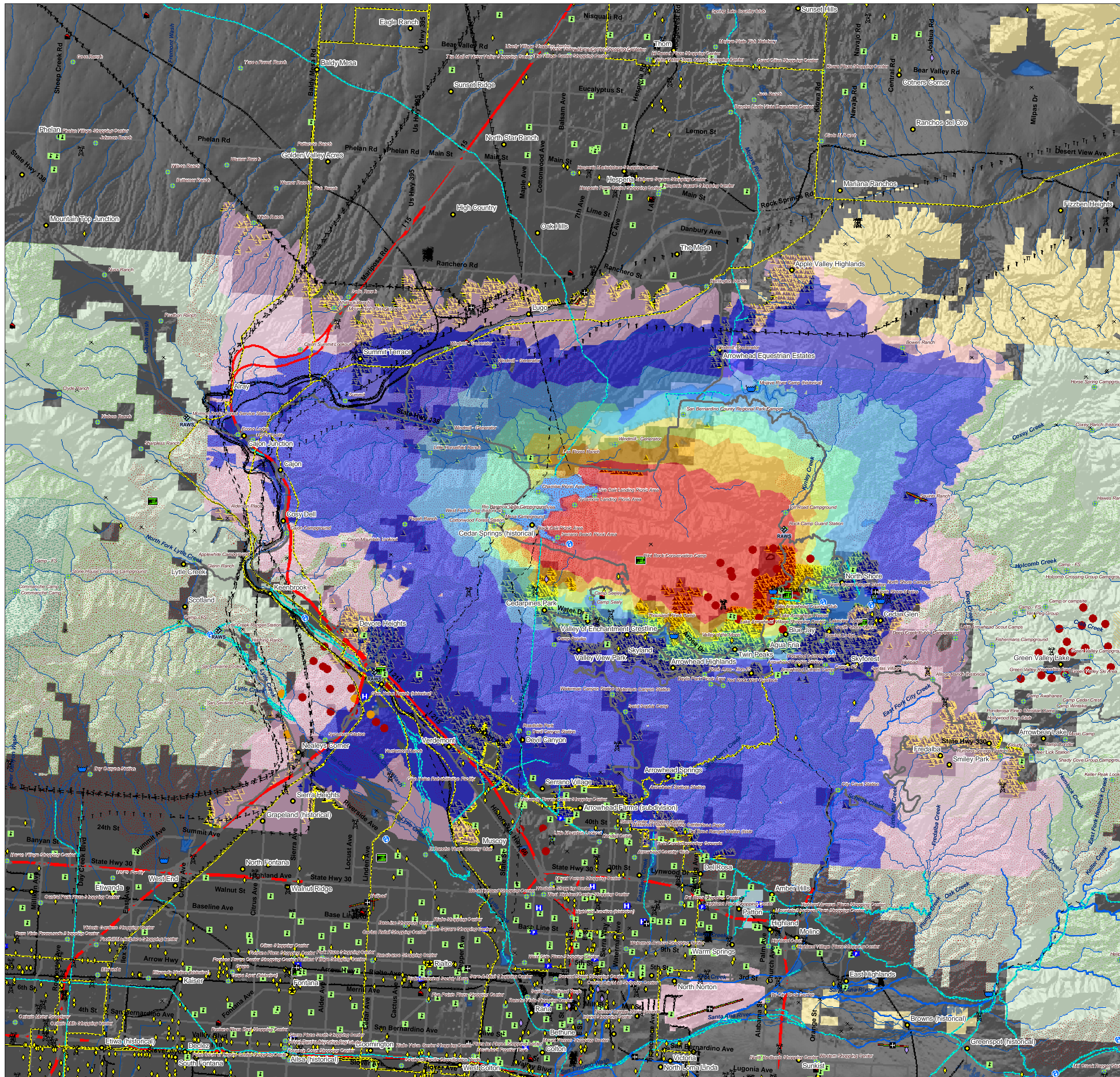


Valley, California

Valley_CA_T1_A_071022_1_eb

Major Values-at-Risk per FSPRO Fire Spread Probabilities: 7 days as of 22 October 2007

- Fire Perimeter: Oct. 22 AM
- MODIS Points updated 071022 PM**
- Prior 6 days
- Yesterday
- Today
- Past Fires 2000-2006
- FSPRO Fire Spread: 7 days from Oct. 22**
- > 80 %
- 60 - 80 %
- 40 - 60 %
- 20 - 40 %
- 5 - 20 %
- 1 - 5 %
- < 1 %
- RAWs Stations
- Building Clusters: San Bernardino Co.
- Water: Dams > 100af
- Water Supply: Intakes
- Water Treatment Plants
- Water Pipeline - Aqueduct - Canal
- Powerlines
- Industrial Plant
- Power Pylon
- Power or Pumping Substation
- Communication Towers
- Oil & Gas Transmission Lines
- Airports
- Airport Runways
- Ski Resort Cables
- Police Stations
- Hospitals
- Fire Stations
- Schools
- HAZMAT: Mines
- HAZMAT: Superfund Sites
- HAZMAT: Hazardous Waste
- Other Landmarks
- Interstates
- Major Roads
- Railways
- County Boundary
- Jurisdiction**
- Private
- State
- BLM
- DOD
- USFS
- Inventoried Roadless
- Designated Wilderness
- Experimental RNA
- Primitive RNA



*Building Clusters represent the center of parcels where county assessor records indicate taxable improvements are present. One or more structures and other improvements may exist proximate to these point locations.

CAUTION: Defer to air photos or local knowledge for exact structure and other feature locations.

1:60,000

0 2.5 5 10 Miles