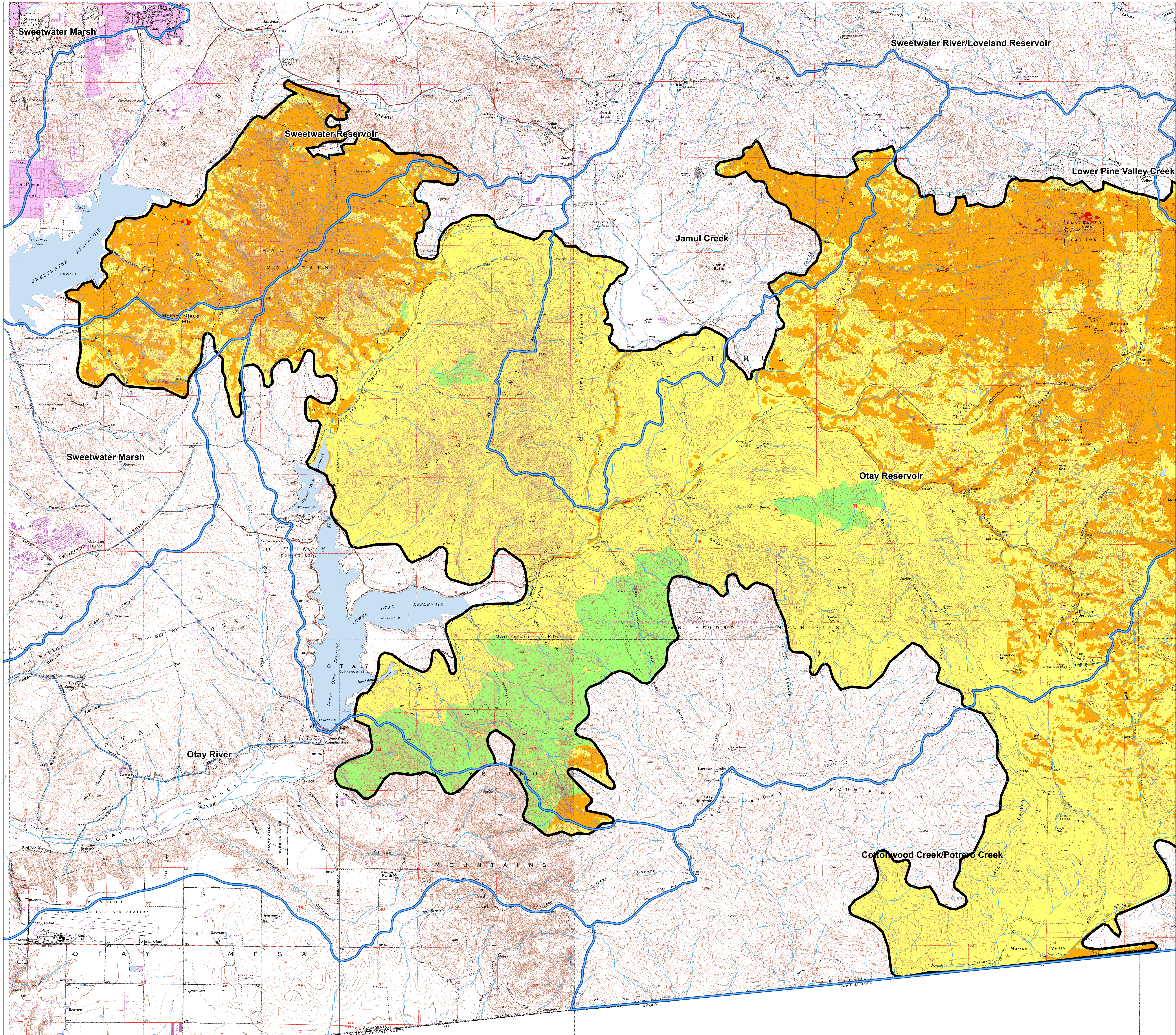


# Harris (West)

## Final Burn Severity Map

based on Representational Field Update  
November 20, 2007



**Legend**

- Fire Perimeter
- Watersheds
- NHD Flowline**
- Pipeline
- Shoreline
- Stream/River
- Burn Severity**
- 1 Unburned
- 2 Low
- 3 Moderate
- 4 High

