

Harris Fire, CA

T3_A_071023-1_jk 23 Oct 2007

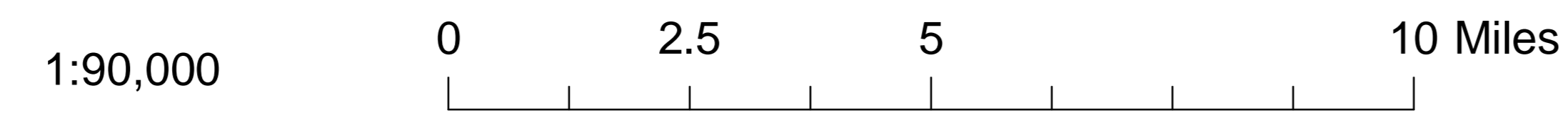
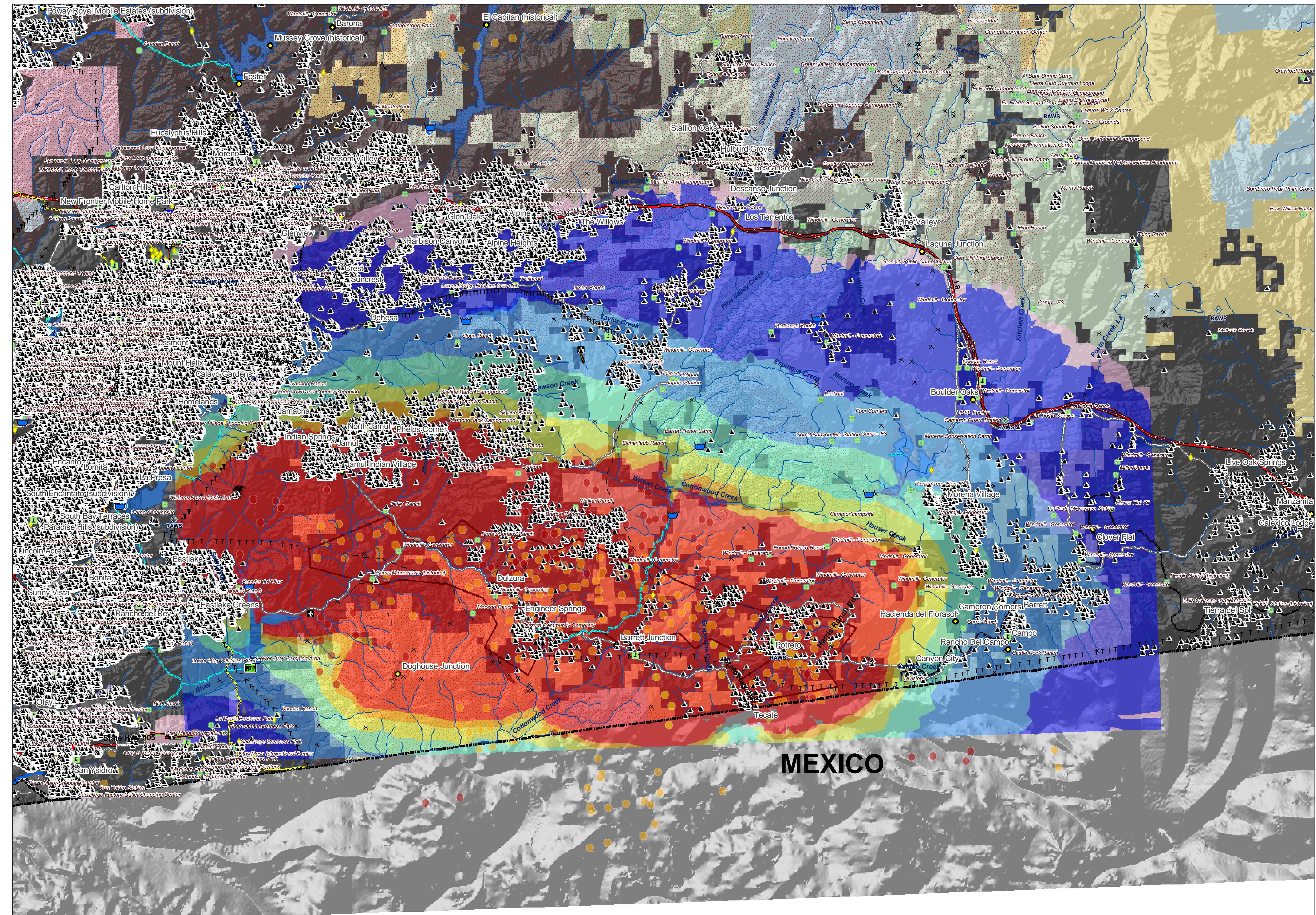
Major Values-at-Risk per FSPRO Fire Spread Probabilities: 7 days as of 23 October 2007

- Fire Perimeter: 22 Oct PM
- Past Fires 2000-2006
- FSPRO Fire Spread Probabilities**
- > 80 %
- 60 - 80 %
- 40 - 60 %
- 20 - 40 %
- 5 - 20 %
- 1 - 5 %
- < 1 %
- RAWs Stations
- Building Clusters: San Diego County
- Water: Dams > 100af
- Water Supply: Intakes
- Water Treatment Plants
- Water Pipeline - Aqueduct - Canal
- Powerlines
- Industrial Plant
- Power Pylon
- Power or Pumping Substation
- Communication Towers
- Oil & Gas Transmission Lines
- Airports
- Airport Runways
- Ski Resort Cables
- Hospitals
- Schools
- HAZMAT: Mines
- HAZMAT: Superfund Sites
- HAZMAT: Hazardous Waste
- HAZMAT: Landfill
- Other Landmarks
- Interstates
- Major Roads
- Railways
- Jurisdiction**
- Private
- State
- BLM
- Other Federal
- DOD
- USFS
- Inventoried Roadless
- Designated Wilderness
- Experimental RNA
- Primitive RNA

- MODIS Points 7 days: 23 Oct AM**
- DATE**
- 23 October 2007
- 22 October 2007
- Prior 6 days

*Building Clusters represent the center of parcels where county assessor records indicate taxable improvements are present. One or more structures and other improvements may exist proximate to these point locations.

CAUTION: Defer to air photos or local knowledge for exact structure and other feature locations.



- Fire Perimeter: 22 Oct PM
- FSPRO Fire Spread Probabilities**
- > 80 %
- 60 - 80 %
- 40 - 60 %
- 20 - 40 %
- 5 - 20 %
- 1 - 5 %
- < 1 %
- International Boundary
- Direct Protection Areas**
- CDF
- DOD
- LOCAL
- USFS

