

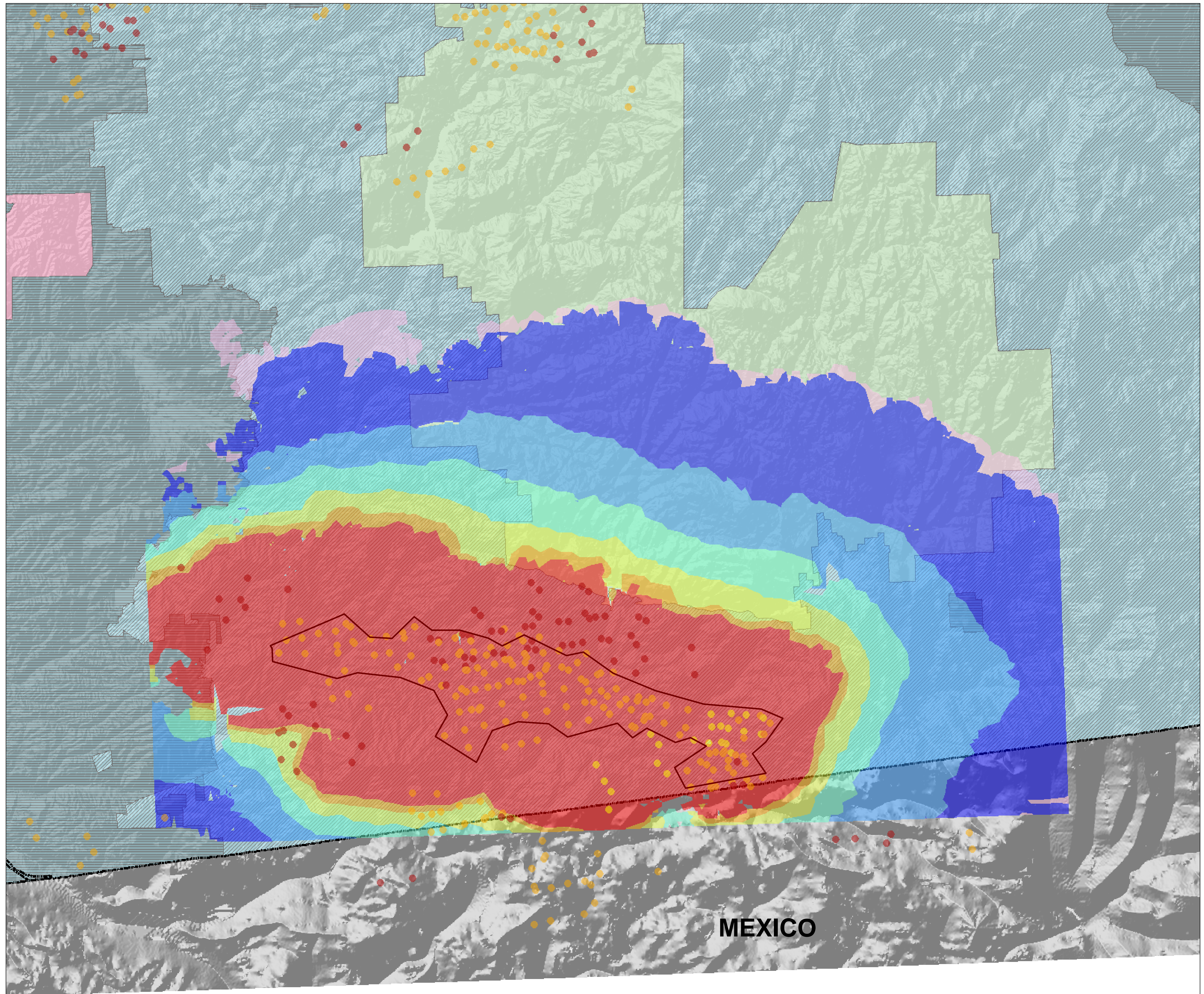


### Harris Fire, CA

T3\_A\_071023-1\_jk 23 Oct 2007

Major Values-at-Risk per  
FSPRO Fire Spread Probabilities:  
7 days as of 23 October 2007

- Fire Perimeter: 22 Oct PM
- MODIS Points 7 days: 23 Oct AM**
- 23 October 2007
- 22 October 2007
- Prior 6 days
- FSPRO Fire Spread Probabilities**
- > 80 %
- 60 - 80 %
- 40 - 60 %
- 20 - 40%
- 5 - 20 %
- 1 - 5 %
- < 1 %
- International Boundary
- Direct Protection Areas**
- CDF
- DOD
- LOCAL
- USFS



MEXICO

\*Building Clusters represent the center of parcels where county assessor records indicate taxable improvements are present. One or more structures and other improvements may exist proximate to these point locations.

CAUTION: Defer to air photos or local knowledge for exact structure and other feature locations.



1:90,000

