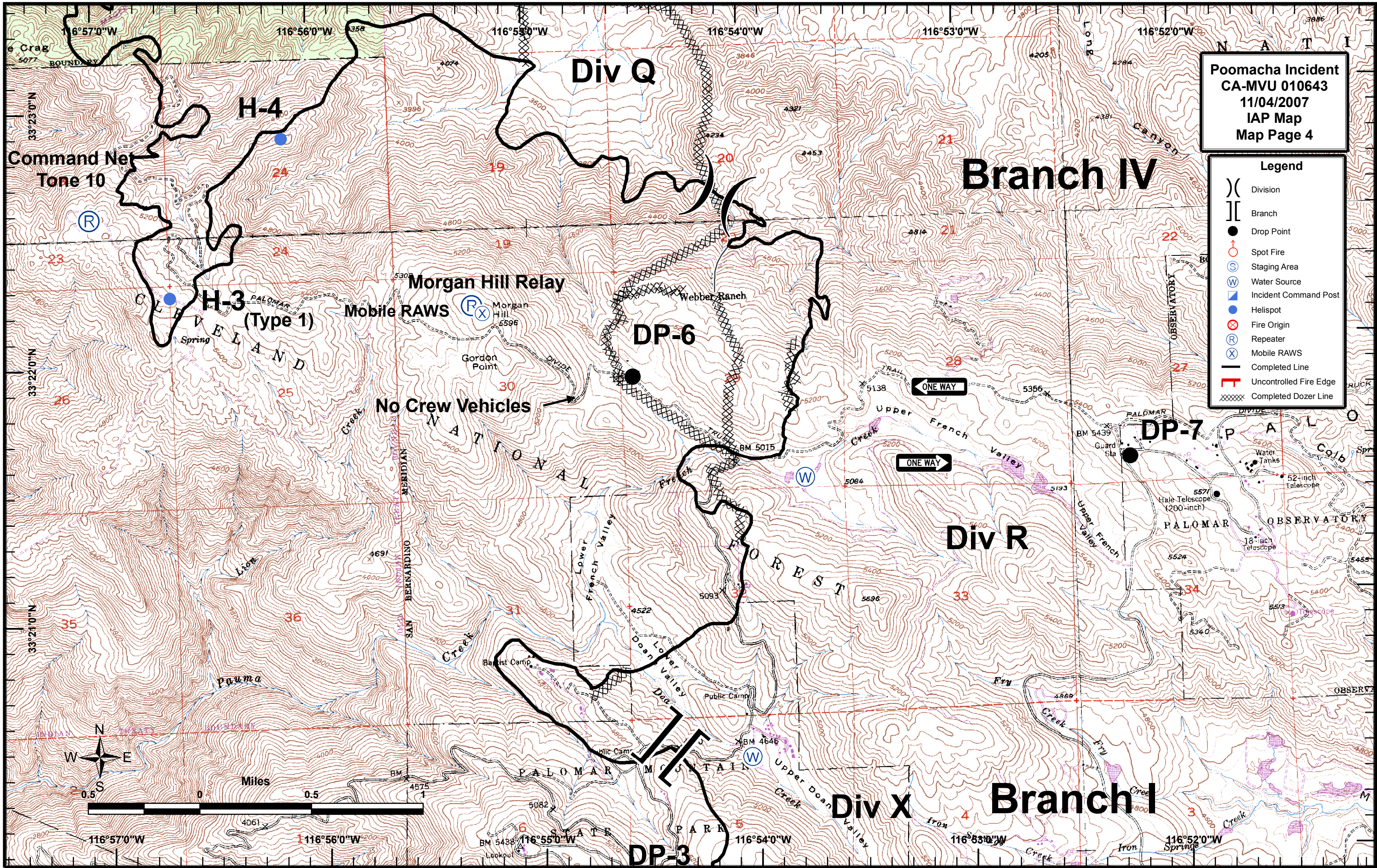


Poomacha Incident
CA-MVU 010643
11/04/2007
IAP Map
Map Page 4

Legend

- () Division
- [] Branch
- Drop Point
- ♂ Spot Fire
- ⊙ Staging Area
- ⊙ Water Source
- ⊙ Incident Command Post
- ⊙ Helispot
- ⊙ Fire Origin
- ⊙ Repeater
- ⊙ Mobile RAWS
- Completed Line
- Uncontrolled Fire Edge
- XXXXX Completed Dozer Line



Div Q

Branch IV

Div R

Div X

Branch I

H-4

H-3
(Type 1)

DP-6

DP-7

DP-3

Command Net
Tone 10

Morgan Hill Relay

Mobile RAWS

No Crew Vehicles

ONE WAY

ONE WAY

