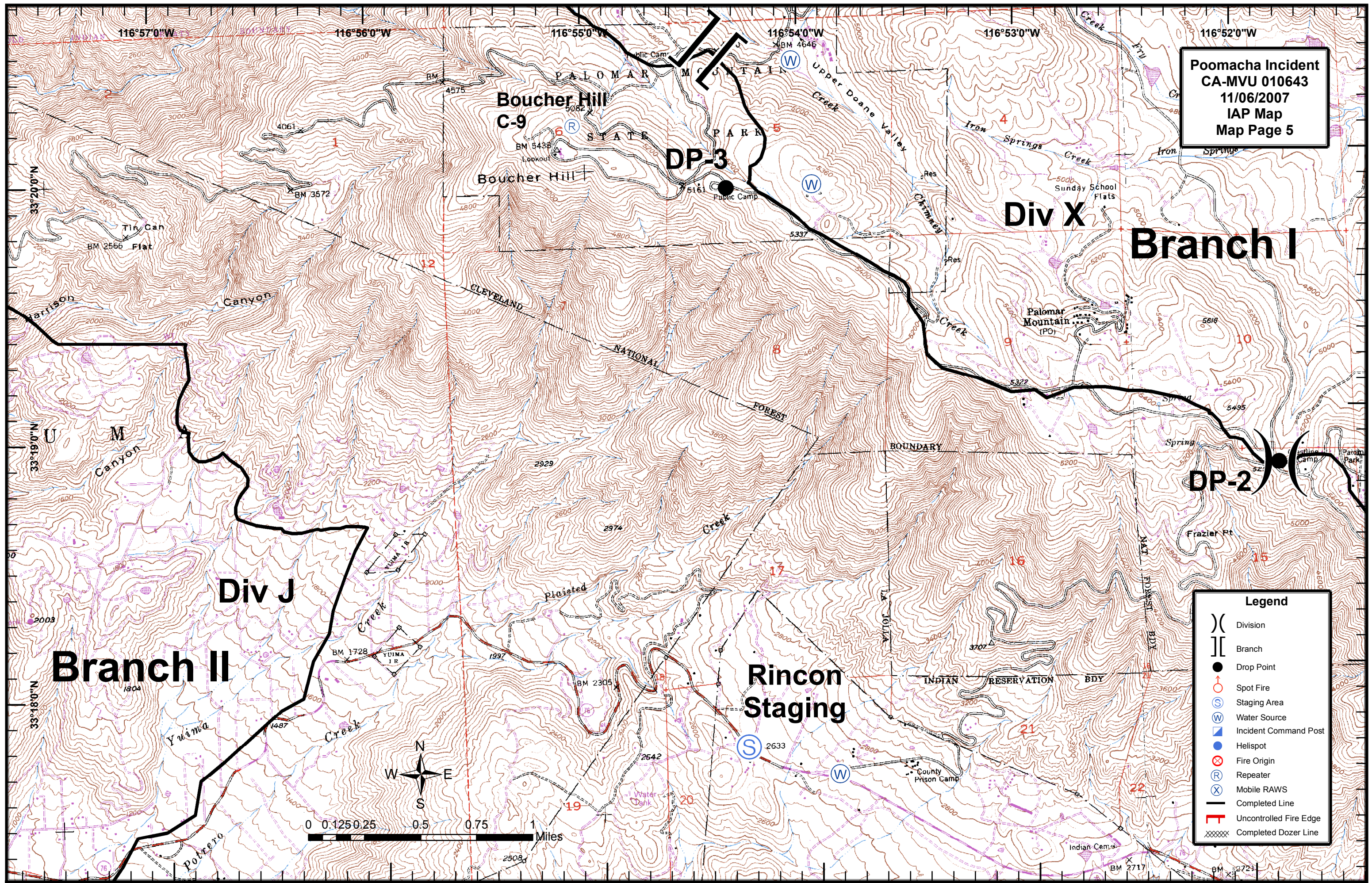


Poomacha Incident
CA-MVU 010643
11/06/2007
IAP Map
Map Page 5



Div X
Branch I

Branch II

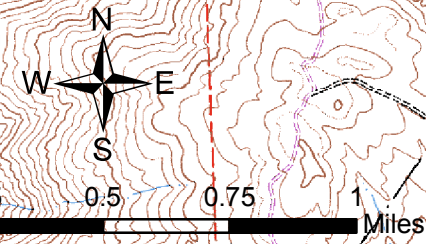
Div J

Rincon Staging

Boucher Hill C-9

DP-3

DP-2



Legend	
()	Division
[]	Branch
●	Drop Point
○	Spot Fire
⊙	Staging Area
⊕	Water Source
⊠	Incident Command Post
⊙	Helispot
⊗	Fire Origin
⊙	Repeater
⊗	Mobile RAWS
—	Completed Line
—	Uncontrolled Fire Edge
XXXX	Completed Dozer Line