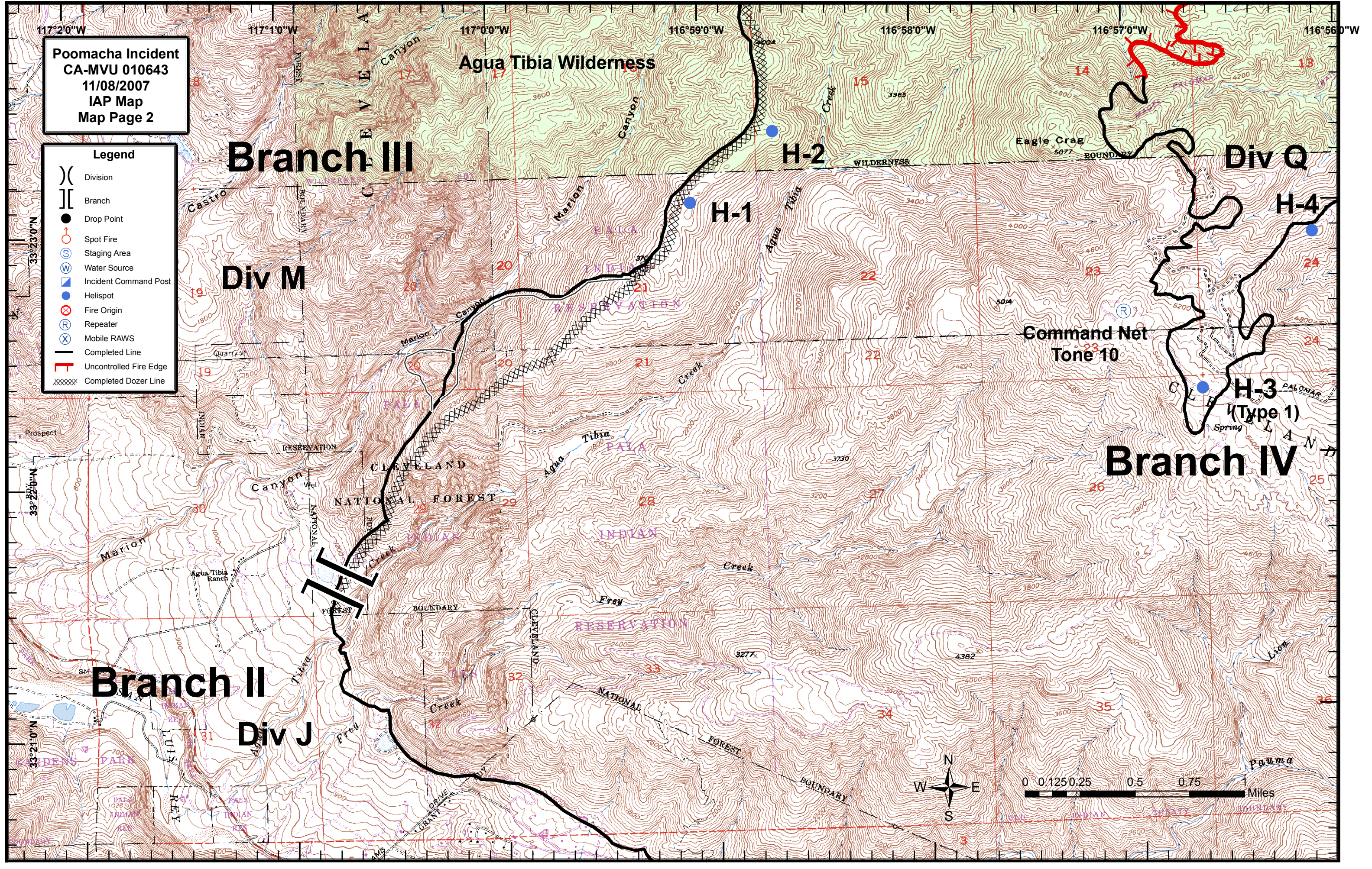


Poomacha Incident
CA-MVU 010643
11/08/2007
IAP Map
Map Page 2

Legend

- () Division
- [] Branch
- Drop Point
- Spot Fire
- ⊙ Staging Area
- ⊙ Water Source
- ⊙ Incident Command Post
- Helispot
- ⊙ Fire Origin
- ⊙ Repeater
- ⊙ Mobile RAWS
- Completed Line
- Uncontrolled Fire Edge
- XXXXX Completed Dozer Line



Branch III

Div M

H-2

H-1

Div Q

H-4

**H-3
(Type 1)**

Branch IV

Branch II

Div J

**Command Net
Tone 10**

