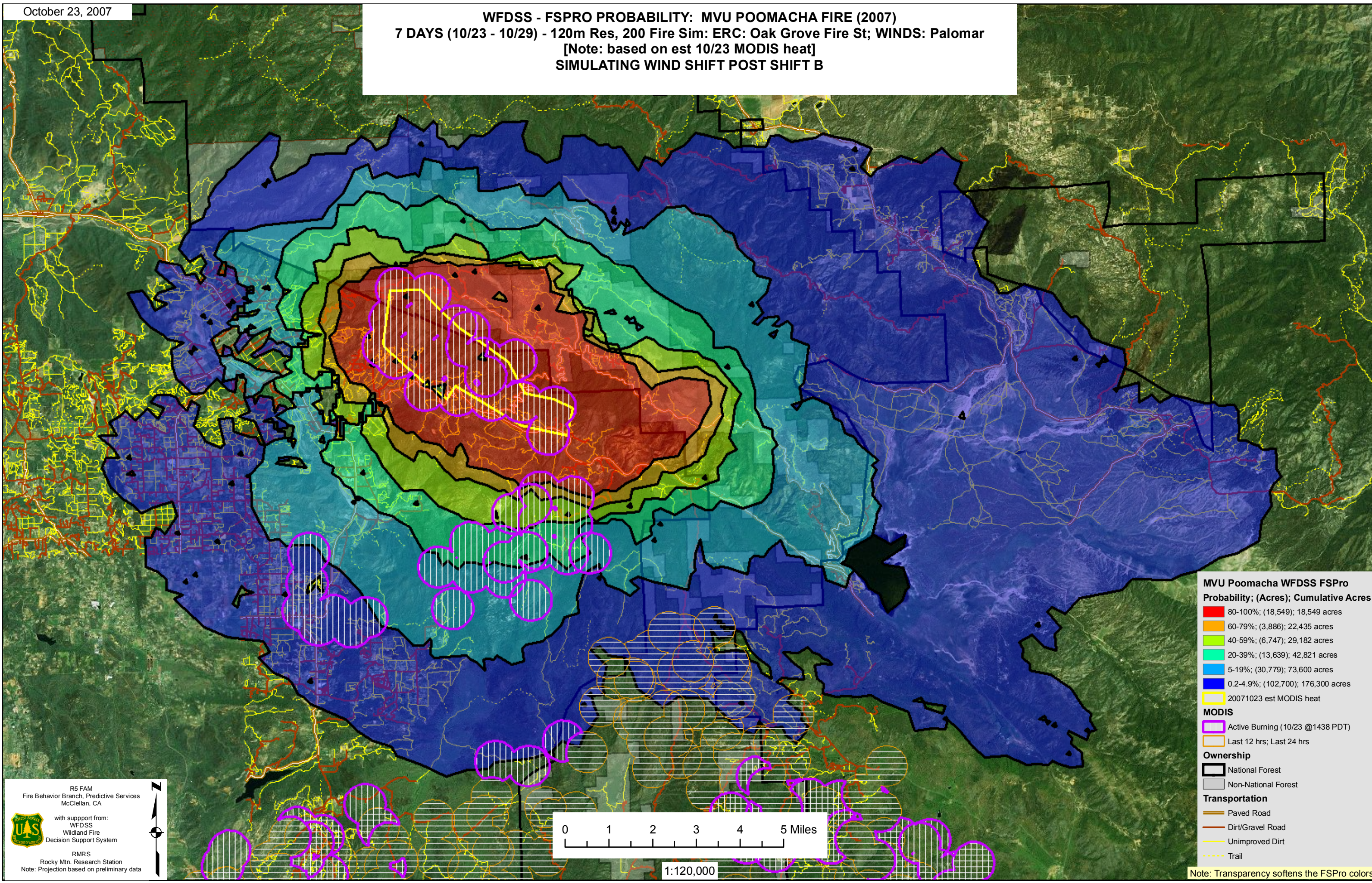


October 23, 2007

WFDSS - FSPRO PROBABILITY: MVU POOMACHA FIRE (2007)
7 DAYS (10/23 - 10/29) - 120m Res, 200 Fire Sim: ERC: Oak Grove Fire St; WINDS: Palomar
 [Note: based on est 10/23 MODIS heat]
SIMULATING WIND SHIFT POST SHIFT B



MVU Poomacha WFDSS FSPro
Probability; (Acres); Cumulative Acres

- 80-100%; (18,549); 18,549 acres
- 60-79%; (3,886); 22,435 acres
- 40-59%; (6,747); 29,182 acres
- 20-39%; (13,639); 42,821 acres
- 5-19%; (30,779); 73,600 acres
- 0.2-4.9%; (102,700); 176,300 acres

MODIS

- Active Burning (10/23 @1438 PDT)
- Last 12 hrs; Last 24 hrs

Ownership

- National Forest
- Non-National Forest

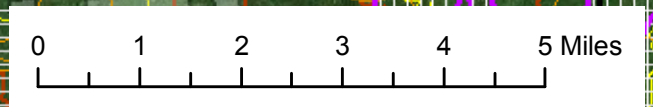
Transportation

- Paved Road
- Dirt/Gravel Road
- Unimproved Dirt
- - - Trail

R5 FAM
 Fire Behavior Branch, Predictive Services
 McClellan, CA

with support from:
 WFDSS
 Wildland Fire
 Decision Support System

RMRS
 Rocky Mtn. Research Station
 Note: Projection based on preliminary data



1:120,000

Note: Transparency softens the FSPro colors