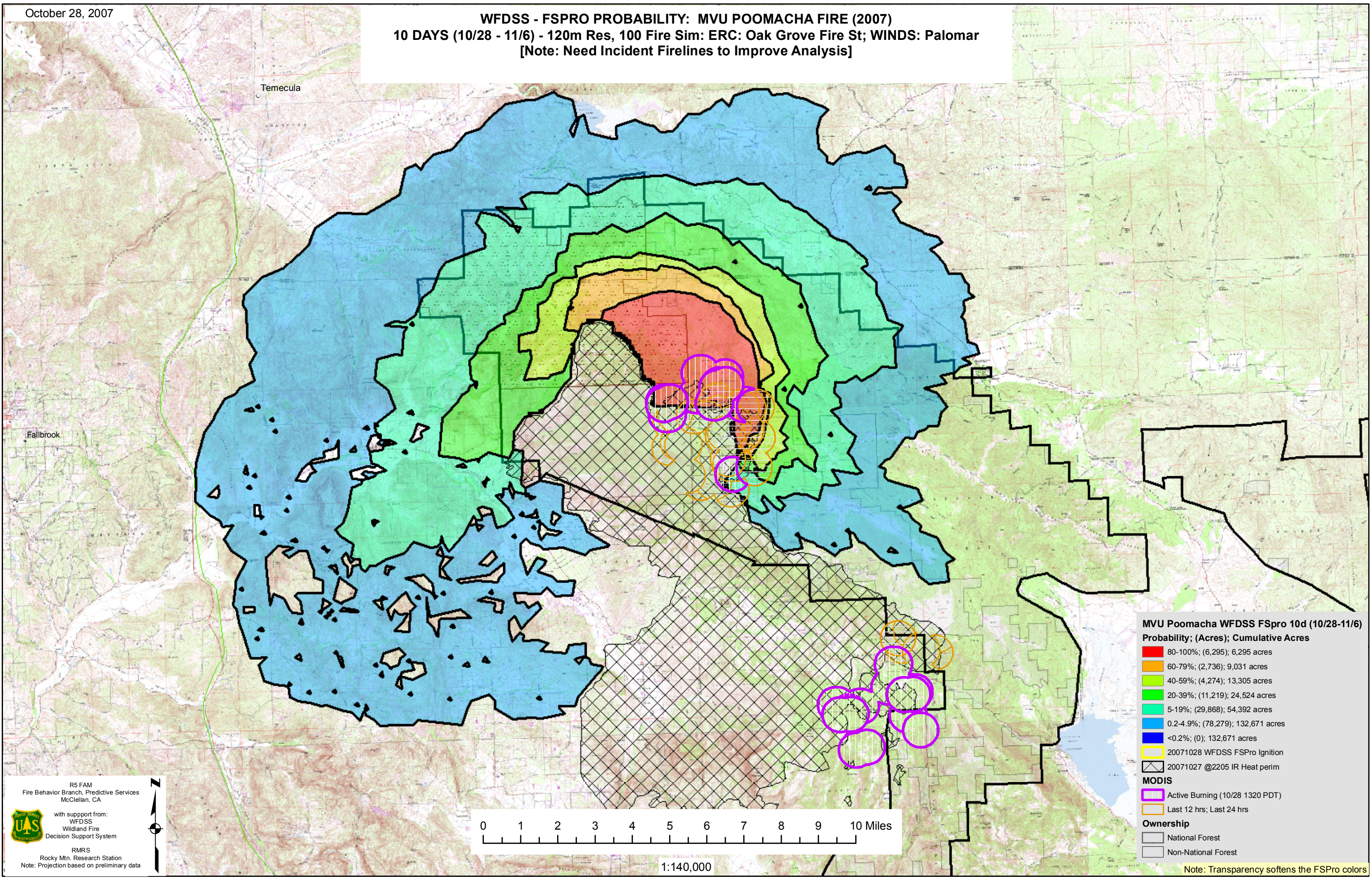


October 28, 2007

**WFDSS - FSPRO PROBABILITY: MVU POOMACHA FIRE (2007)**  
**10 DAYS (10/28 - 11/6) - 120m Res, 100 Fire Sim: ERC: Oak Grove Fire St; WINDS: Palomar**  
[Note: Need Incident Firelines to Improve Analysis]



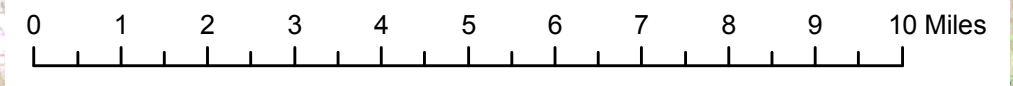
**MVU Poomacha WFDSS FSpro 10d (10/28-11/6)**  
**Probability; (Acres); Cumulative Acres**

- 80-100%; (6,295); 6,295 acres
  - 60-79%; (2,736); 9,031 acres
  - 40-59%; (4,274); 13,305 acres
  - 20-39%; (11,219); 24,524 acres
  - 5-19%; (29,868); 54,392 acres
  - 0.2-4.9%; (78,279); 132,671 acres
  - <0.2%; (0); 132,671 acres
  - 20071028 WFDSS FSpro Ignition
  - 20071027 @2205 IR Heat perim
- MODIS**
- Active Burning (10/28 1320 PDT)
  - Last 12 hrs; Last 24 hrs
- Ownership**
- National Forest
  - Non-National Forest

R5 FAM  
Fire Behavior Branch, Predictive Services  
McClellan, CA

with support from:  
WFDSS  
Wildland Fire  
Decision Support System

RMRS  
Rocky Mtn. Research Station  
Note: Projection based on preliminary data



1:140,000

Note: Transparency softens the FSPro colors