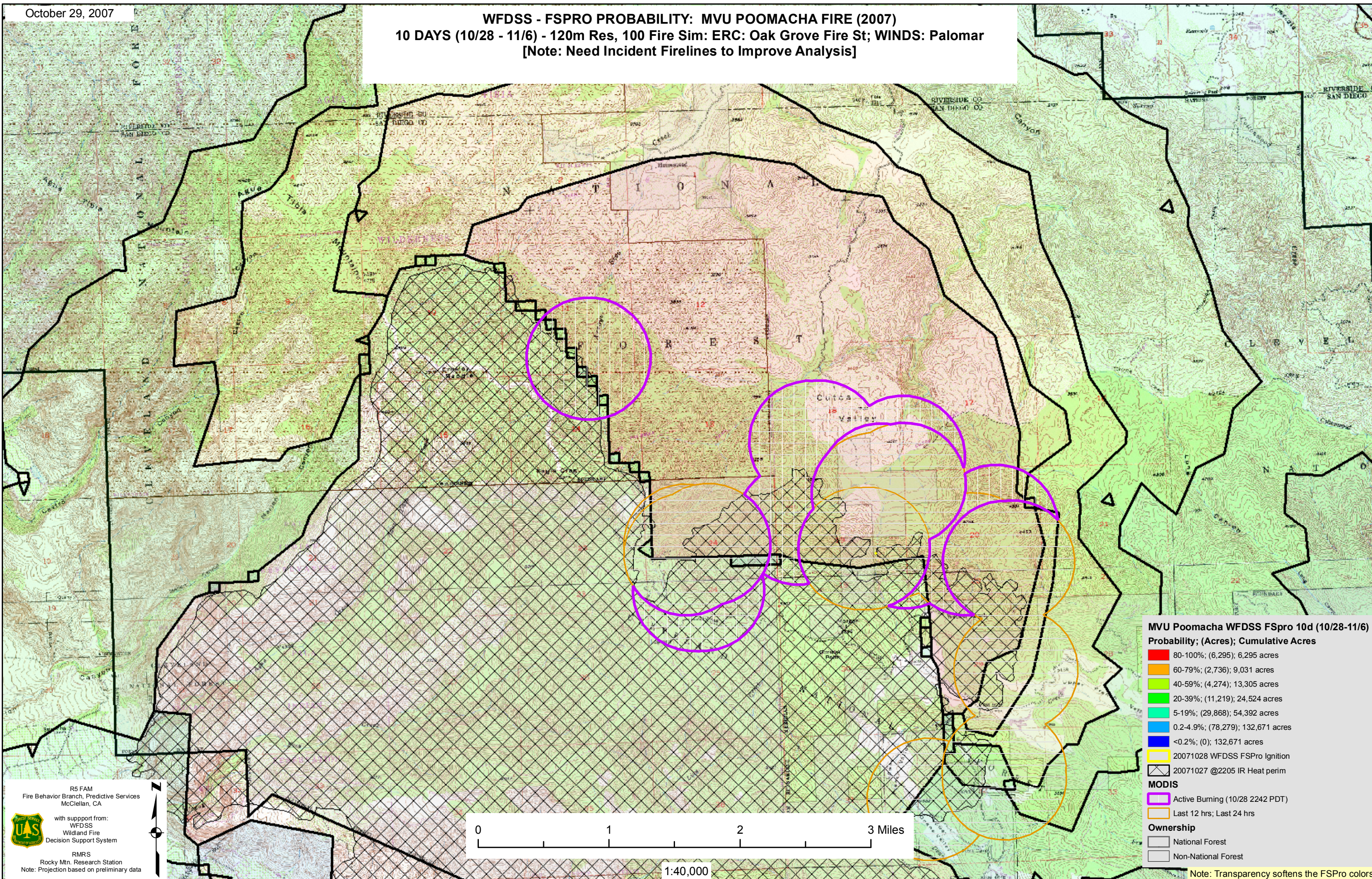


WFDSS - FSPRO PROBABILITY: MVU POOMACHA FIRE (2007)
10 DAYS (10/28 - 11/6) - 120m Res, 100 Fire Sim: ERC: Oak Grove Fire St; WINDS: Palomar
[Note: Need Incident Firelines to Improve Analysis]



MVU Poomacha WFDSS FSpro 10d (10/28-11/6)
Probability; (Acres); Cumulative Acres

- 80-100%; (6,295); 6,295 acres
- 60-79%; (2,736); 9,031 acres
- 40-59%; (4,274); 13,305 acres
- 20-39%; (11,219); 24,524 acres
- 5-19%; (29,868); 54,392 acres
- 0.2-4.9%; (78,279); 132,671 acres
- <0.2%; (0); 132,671 acres

20071028 WFDSS FSpro Ignition
 20071027 @2205 IR Heat perim

MODIS

- Active Burning (10/28 2242 PDT)
- Last 12 hrs; Last 24 hrs

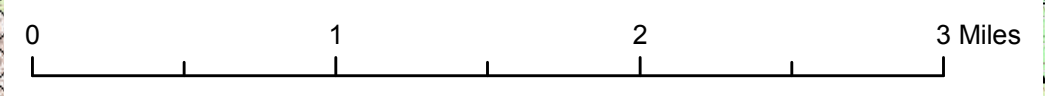
Ownership

- National Forest
- Non-National Forest

R5 FAM
 Fire Behavior Branch, Predictive Services
 McClellan, CA

with support from:
 WFDSS
 Wildland Fire
 Decision Support System

RMRS
 Rocky Mtn. Research Station
 Note: Projection based on preliminary data



1:40,000

Note: Transparency softens the FSpro colors