



Poomacha, California

Poomacha_CA_T1_A_071024_1_eb

Major Values-at-Risk per FSPRO Fire Spread Probabilities: 7 days as of 24 October 2007

Fire Perimeter: Oct 23pm

MODIS Points

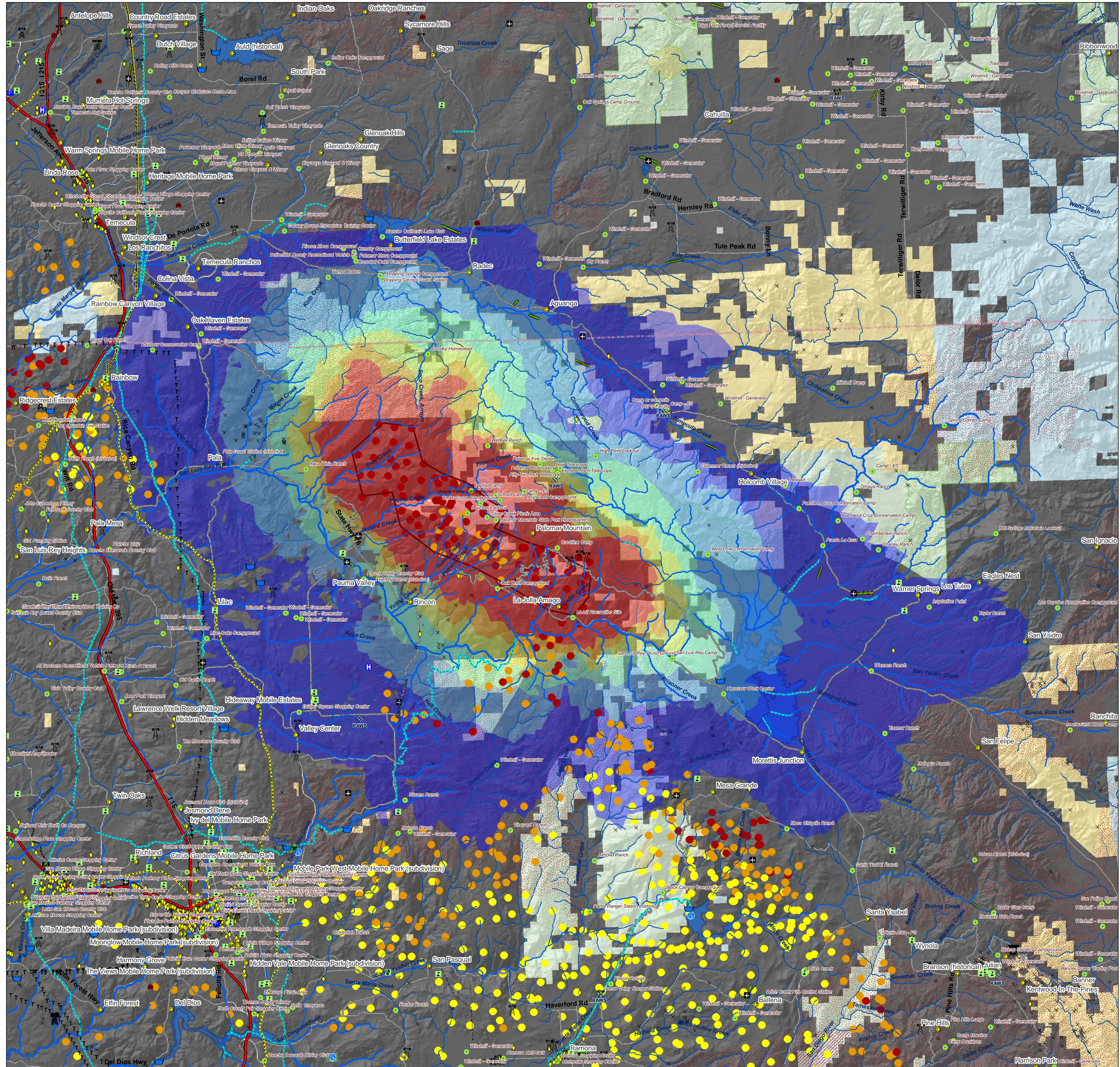
- Previous 6 days
- Yesterday
- Today
- Past Fires 2000-2006

FSPRO Fire Spread: 7 days from Oct 23

- > 80 %
- 60 - 80 %
- 40 - 60 %
- 20 - 40 %
- 5 - 20 %
- 1 - 5 %
- < 1 %

- RAWS Stations
- Water: Dams > 100af
- Water Supply: Intakes
- Water Treatment Plants
- Water Pipeline - Aqueduct - Canal
- Powerlines
- Industrial Plant
- Power Pylon
- Communication Towers
- Oil & Gas Transmission Lines
- Airports
- Airport Runways
- Police Stations
- Hospitals
- Fire Stations
- Schools
- HAZMAT: Mines
- HAZMAT: Superfund Sites
- HAZMAT: Hazardous Waste
- Other Landmarks

- Interstates
- Major Roads
- Railways
- County Boundary
- Jurisdiction**
- Private
- State
- BLM
- USFS
- Inventoried Roadless
- Designated Wilderness
- Experimental RNA
- Primitive RNA
- National Monuments



*Building Clusters represent the center of parcels where county assessor records indicate taxable improvements are present. One or more structures and other improvements may exist proximate to these point locations.

CAUTION: Defer to air photos or local knowledge for exact structure and other feature locations.

1:80,000

0 2.5 5 10 Miles