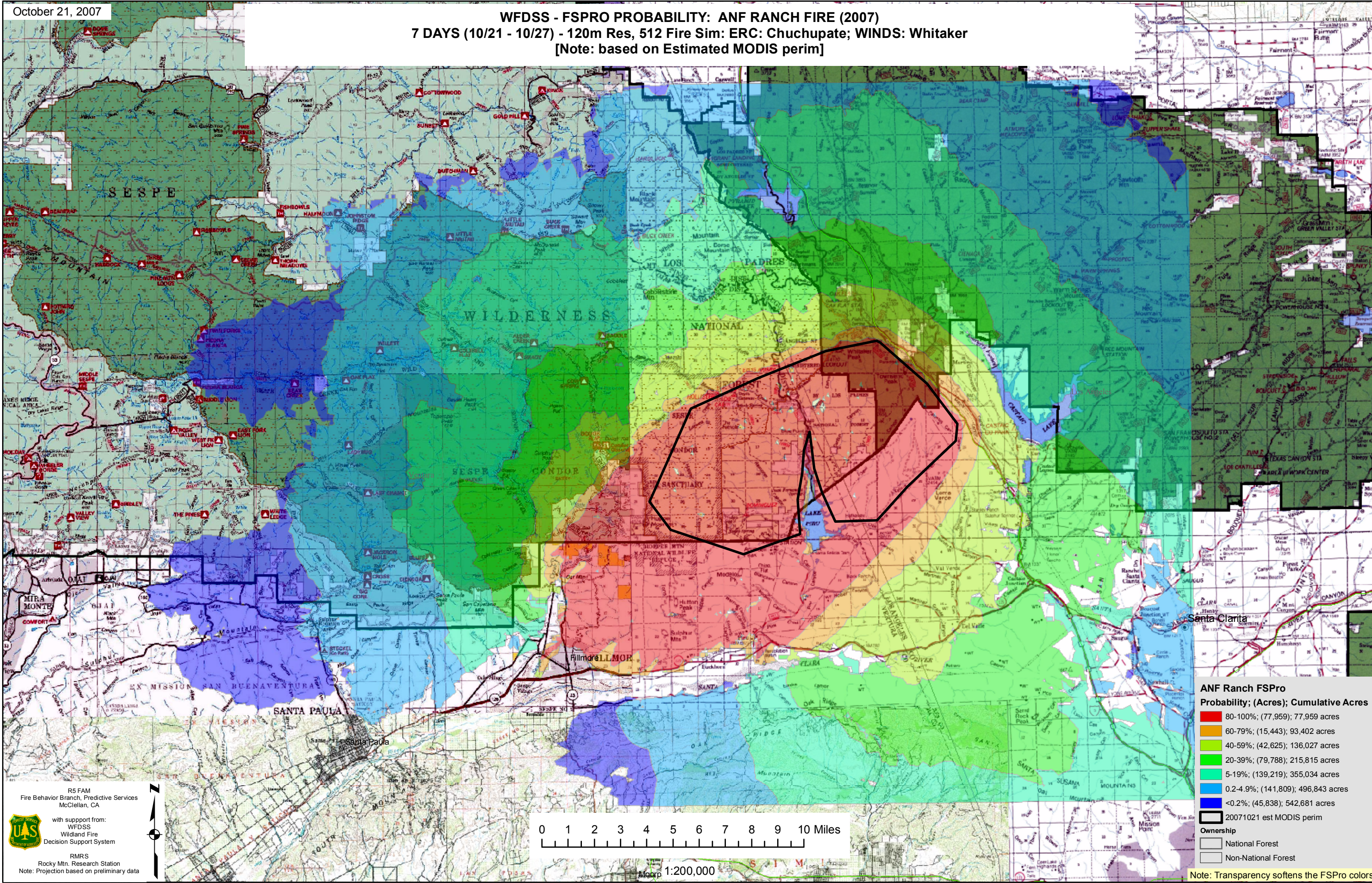


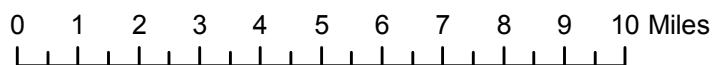
WFDSS - FSPRO PROBABILITY: ANF RANCH FIRE (2007) 7 DAYS (10/21 - 10/27) - 120m Res, 512 Fire Sim: ERC: Chuchupate; WINDS: Whitaker [Note: based on Estimated MODIS perim]



R5 FAM
Fire Behavior Branch, Predictive Services
McClellan, CA

with support from:
WFDSS
Wildland Fire
Decision Support System

RMRS
Rocky Mtn. Research Station
Note: Projection based on preliminary data



Map 1:200,000

ANF Ranch FSPRO
Probability; (Acres); Cumulative Acres

- 80-100%; (77,959); 77,959 acres
- 60-79%; (15,443); 93,402 acres
- 40-59%; (42,625); 136,027 acres
- 20-39%; (79,788); 215,815 acres
- 5-19%; (139,219); 355,034 acres
- 0.2-4.9%; (141,809); 496,843 acres
- <0.2%; (45,838); 542,681 acres
- 20071021 est MODIS perim

Ownership

- National Forest
- Non-National Forest

Note: Transparency softens the FSPRO colors