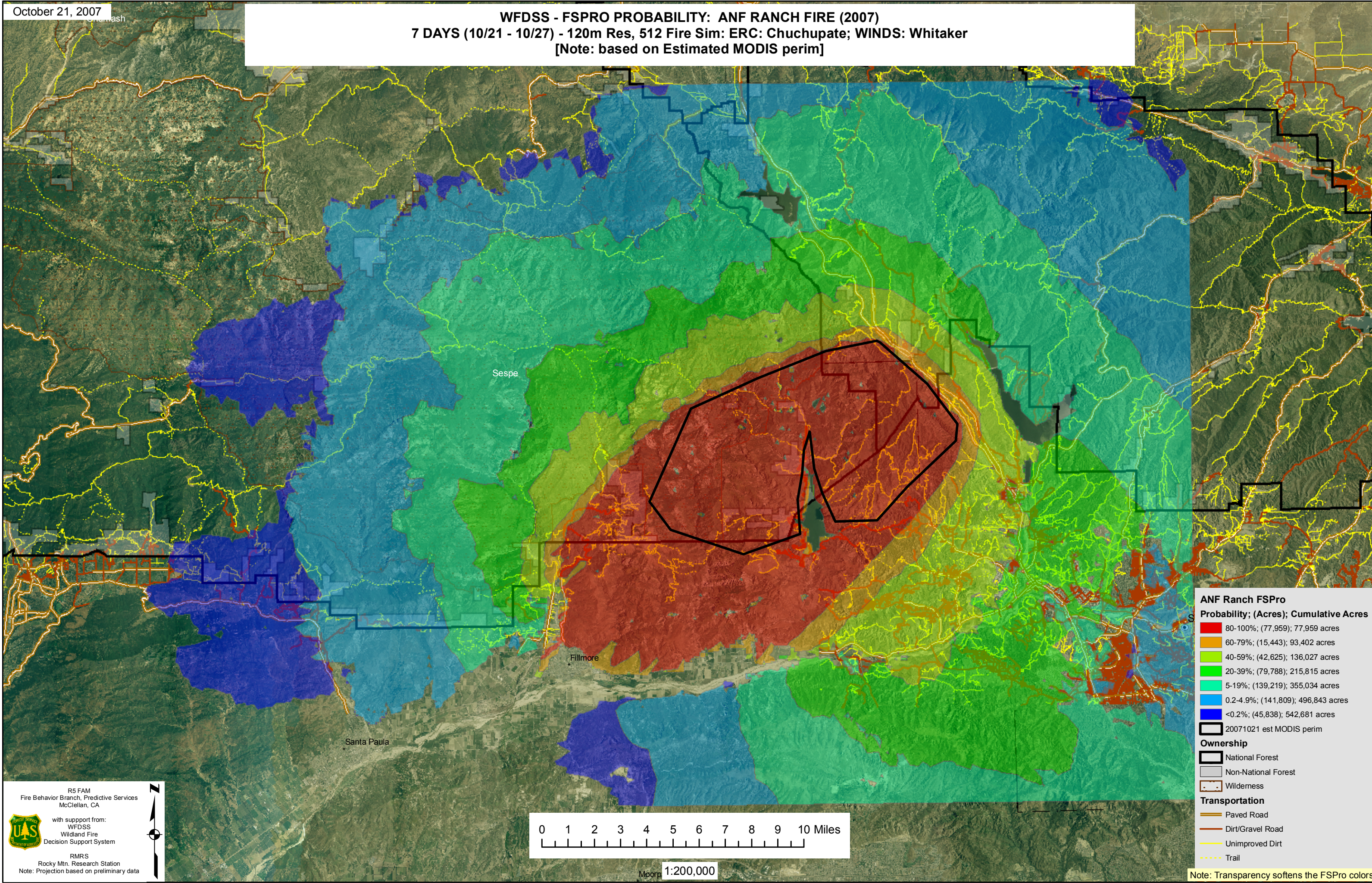


October 21, 2007

**WFDSS - FSPRO PROBABILITY: ANF RANCH FIRE (2007)**  
**7 DAYS (10/21 - 10/27) - 120m Res, 512 Fire Sim: ERC: Chuchupate; WINDS: Whitaker**  
 [Note: based on Estimated MODIS perim]



**ANF Ranch FSPRO**  
**Probability; (Acres); Cumulative Acres**

80-100%	(77,959)	77,959 acres
60-79%	(15,443)	93,402 acres
40-59%	(42,625)	136,027 acres
20-39%	(79,788)	215,815 acres
5-19%	(139,219)	355,034 acres
0.2-4.9%	(141,809)	496,843 acres
<0.2%	(45,838)	542,681 acres

20071021 est MODIS perim

**Ownership**

- National Forest
- Non-National Forest
- Wilderness

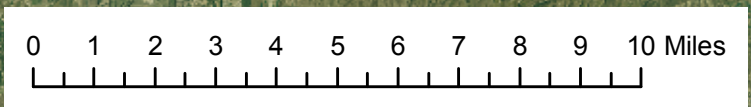
**Transportation**

- Paved Road
- Dirt/Gravel Road
- Unimproved Dirt
- Trail

R5 FAM  
 Fire Behavior Branch, Predictive Services  
 McClellan, CA

with support from:  
 WFDSS  
 Wildland Fire  
 Decision Support System

RMRS  
 Rocky Mtn. Research Station  
 Note: Projection based on preliminary data



Scale: 1:200,000

Note: Transparency softens the FSPRO colors