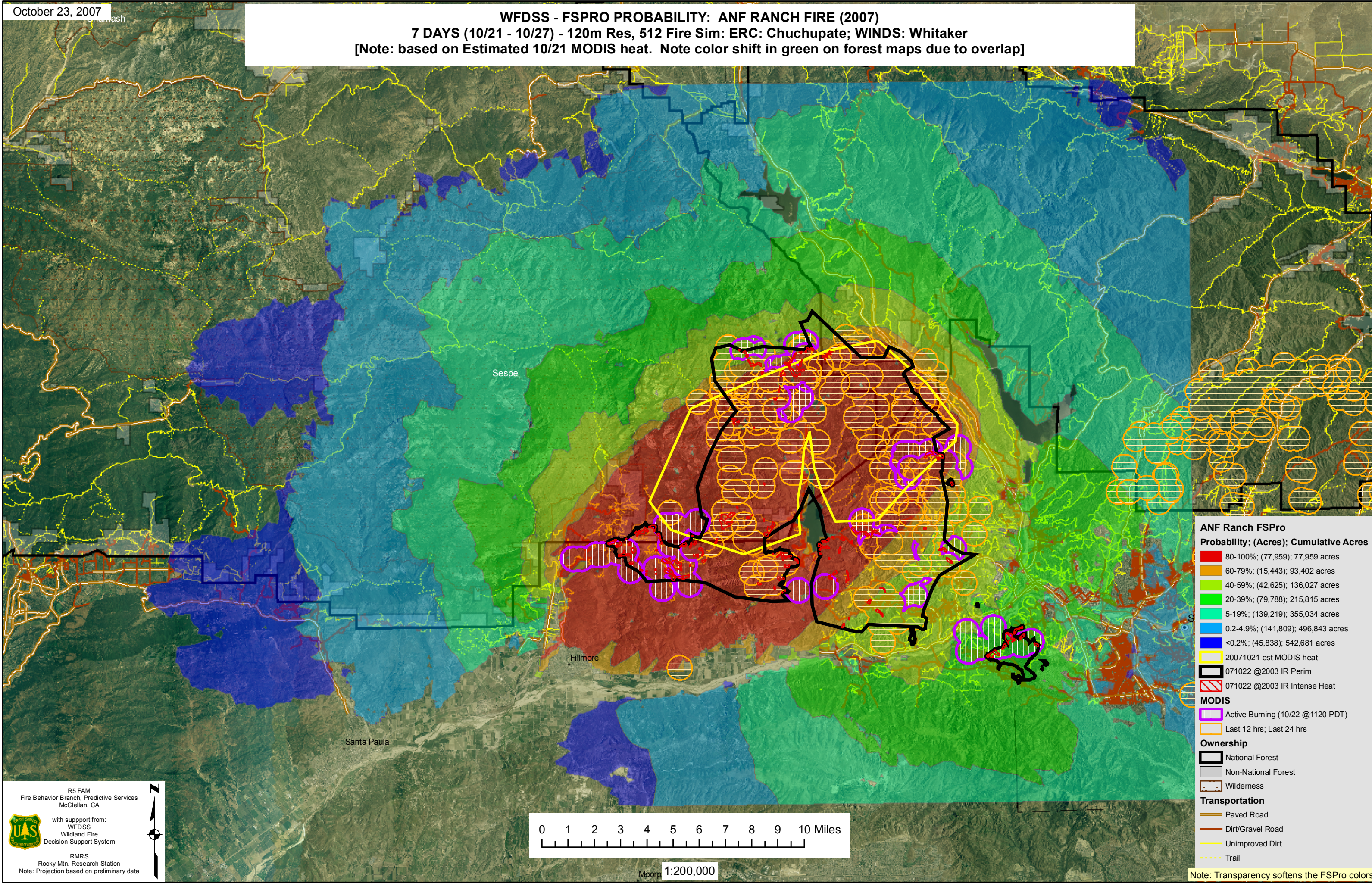


WFDSS - FSPRO PROBABILITY: ANF RANCH FIRE (2007)
7 DAYS (10/21 - 10/27) - 120m Res, 512 Fire Sim: ERC: Chuchupate; WINDS: Whitaker
 [Note: based on Estimated 10/21 MODIS heat. Note color shift in green on forest maps due to overlap]



ANF Ranch FSPRO
Probability; (Acres); Cumulative Acres

80-100%	(77,959)	77,959 acres
60-79%	(15,443)	93,402 acres
40-59%	(42,625)	136,027 acres
20-39%	(79,788)	215,815 acres
5-19%	(139,219)	355,034 acres
0.2-4.9%	(141,809)	496,843 acres
<0.2%	(45,838)	542,681 acres

20071021 est MODIS heat
 071022 @2003 IR Perim
 071022 @2003 IR Intense Heat

MODIS

- Active Burning (10/22 @1120 PDT)
- Last 12 hrs; Last 24 hrs

Ownership

- National Forest
- Non-National Forest
- Wilderness

Transportation

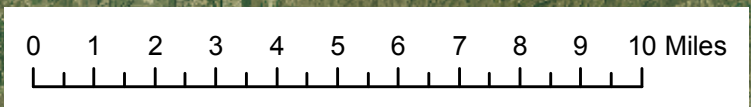
- Paved Road
- Dirt/Gravel Road
- Unimproved Dirt
- Trail

Note: Transparency softens the FSPRO colors

R5 FAM
 Fire Behavior Branch, Predictive Services
 McClellan, CA

with support from:
 WFDSS
 Wildland Fire
 Decision Support System

RMRS
 Rocky Mtn. Research Station
 Note: Projection based on preliminary data



Moop 1:200,000