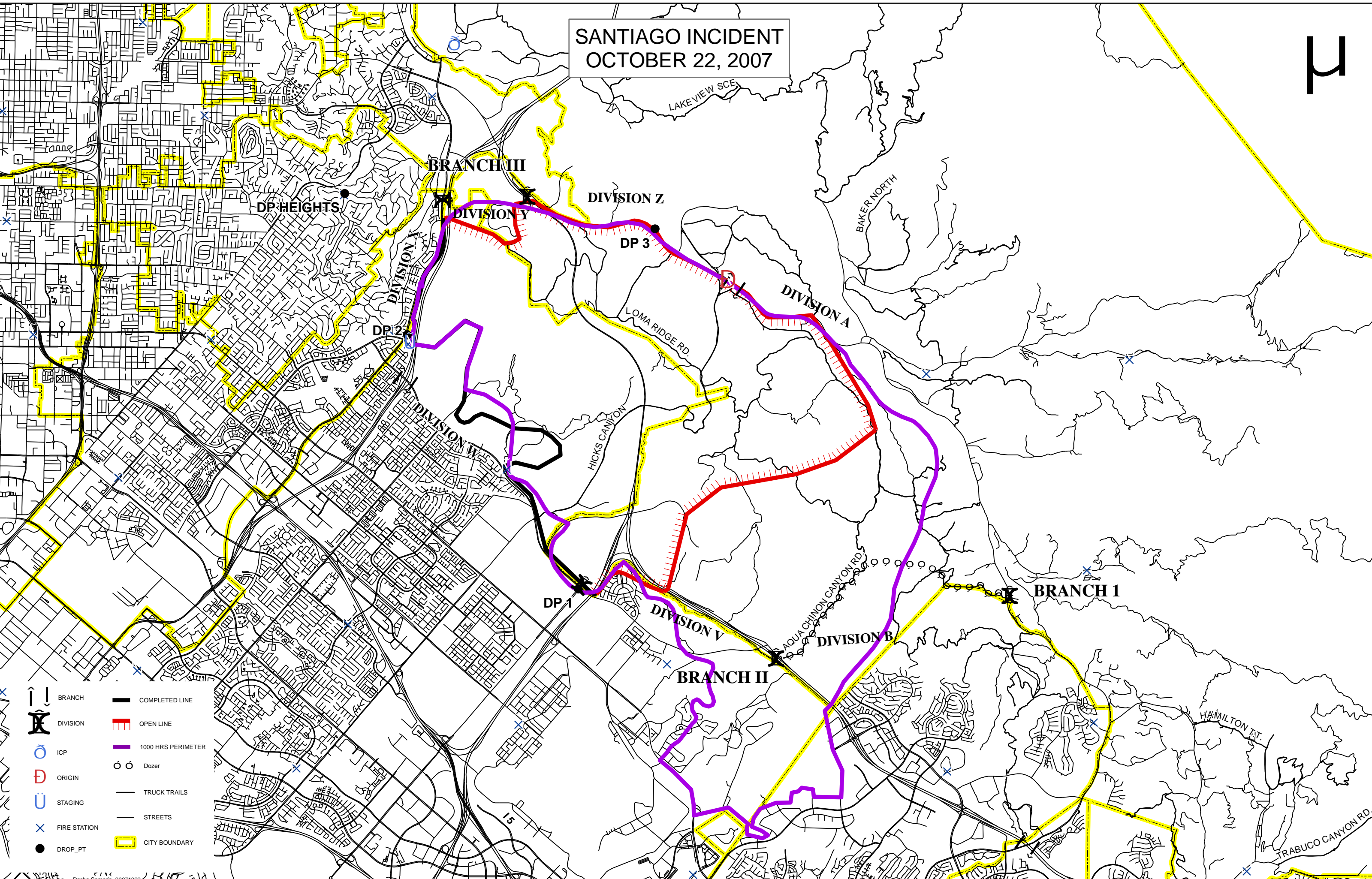


SANTIAGO INCIDENT OCTOBER 22, 2007



- | | | | |
|--|--------------|--|--------------------|
| | BRANCH | | COMPLETED LINE |
| | DIVISION | | OPEN LINE |
| | ICP | | 1000 HRS PERIMETER |
| | ORIGIN | | Dozer |
| | STAGING | | TRUCK TRAILS |
| | FIRE STATION | | STREETS |
| | DROP_PT | | CITY BOUNDARY |