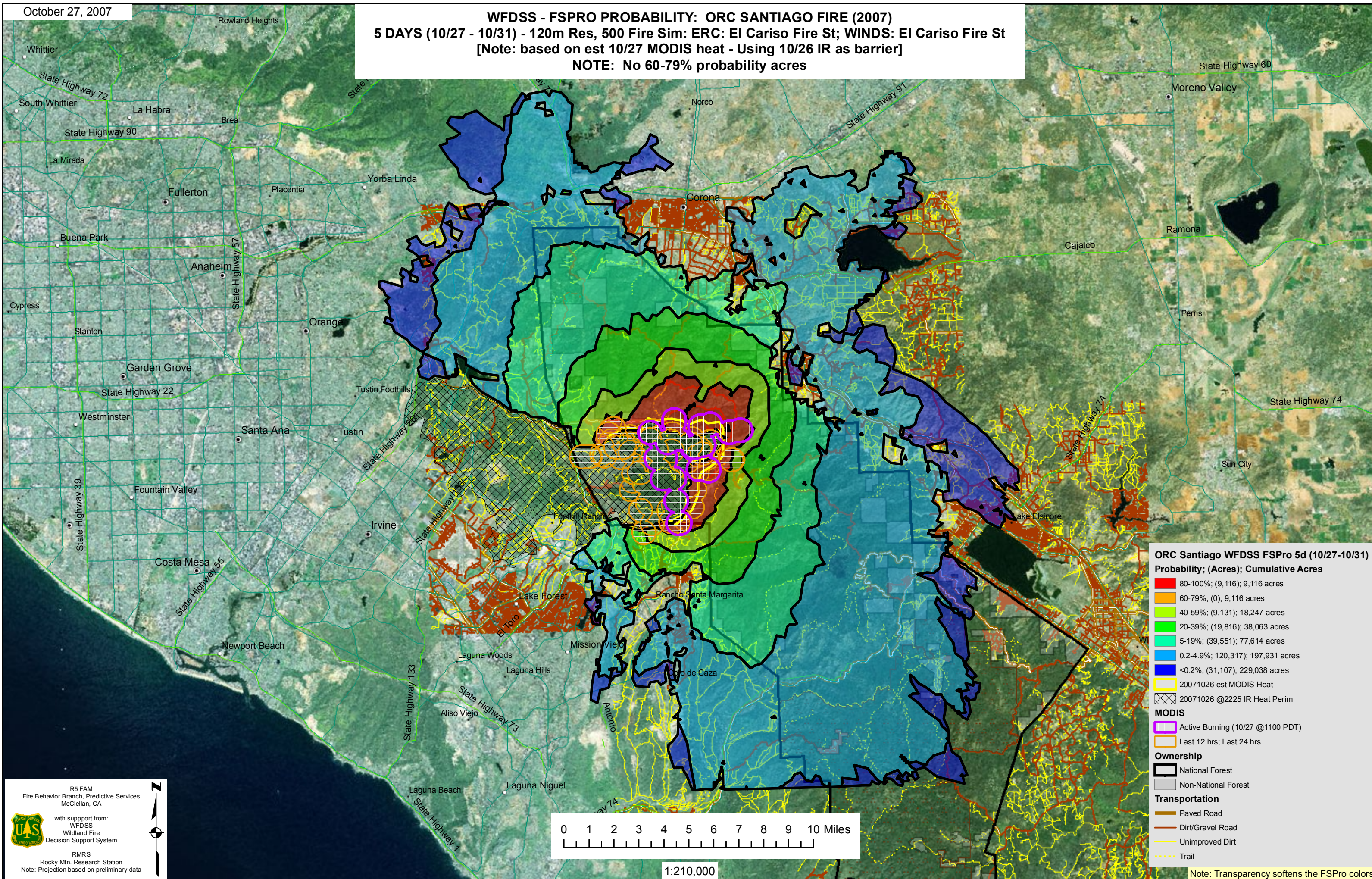


October 27, 2007

**WFDSS - FSPRO PROBABILITY: ORC SANTIAGO FIRE (2007)**  
**5 DAYS (10/27 - 10/31) - 120m Res, 500 Fire Sim: ERC: El Cariso Fire St; WINDS: El Cariso Fire St**  
[Note: based on est 10/27 MODIS heat - Using 10/26 IR as barrier]  
**NOTE: No 60-79% probability acres**



**ORC Santiago WFDSS FSPRO 5d (10/27-10/31)**  
**Probability; (Acres); Cumulative Acres**

- 80-100%; (9,116); 9,116 acres
- 60-79%; (0); 9,116 acres
- 40-59%; (9,131); 18,247 acres
- 20-39%; (19,816); 38,063 acres
- 5-19%; (39,551); 77,614 acres
- 0.2-4.9%; 120,317; 197,931 acres
- <0.2%; (31,107); 229,038 acres

**20071026 est MODIS Heat**  
**20071026 @2225 IR Heat Perim**

**MODIS**

- Active Burning (10/27 @1100 PDT)
- Last 12 hrs; Last 24 hrs

**Ownership**

- National Forest
- Non-National Forest

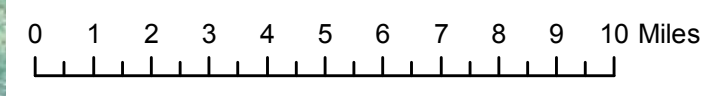
**Transportation**

- Paved Road
- Dirt/Gravel Road
- Unimproved Dirt
- Trail

R5 FAM  
Fire Behavior Branch, Predictive Services  
McClellan, CA

with support from:  
WFDSS  
Wildland Fire  
Decision Support System

RMRS  
Rocky Mtn. Research Station  
Note: Projection based on preliminary data



1:210,000

Note: Transparency softens the FSPRO colors