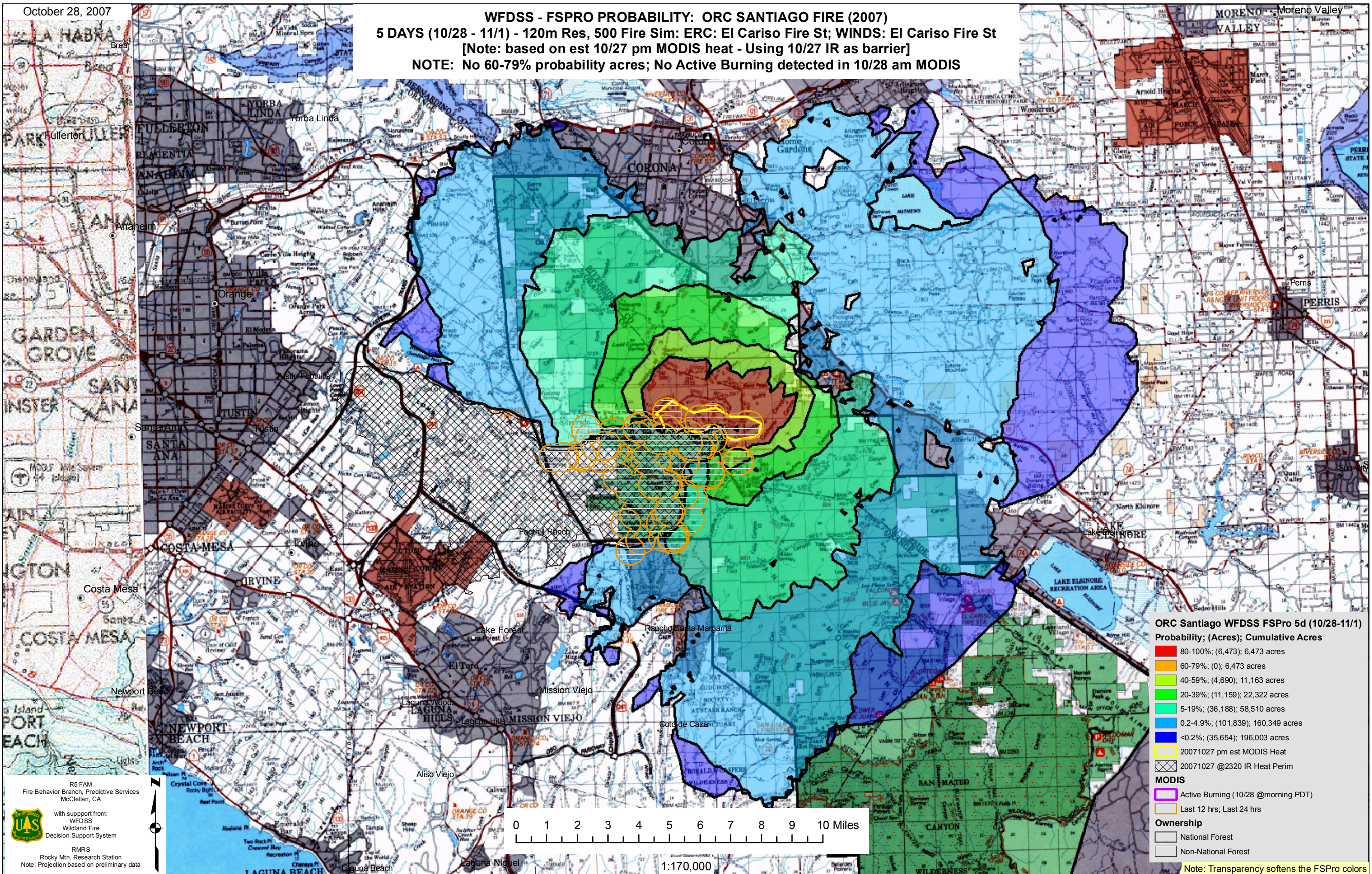


October 28, 2007

**WFDSS - FSPRO PROBABILITY: ORC SANTIAGO FIRE (2007)**  
**5 DAYS (10/28 - 11/1) - 120m Res, 500 Fire Sim: ERC: El Cariso Fire St; WINDS: El Cariso Fire St**  
 [Note: based on est 10/27 pm MODIS heat - Using 10/27 IR as barrier]  
**NOTE: No 60-79% probability acres; No Active Burning detected in 10/28 am MODIS**



**ORC Santiago WFDSS FSPRO 5d (10/28-11/1)**  
**Probability; (Acres); Cumulative Acres**

- 80-100%; (6,473); 6,473 acres
- 60-79%; (0); 6,473 acres
- 40-59%; (4,690); 11,163 acres
- 20-39%; (11,159); 22,322 acres
- 5-19%; (36,188); 58,510 acres
- 0.2-4.9%; (101,839); 160,349 acres
- <0.2%; (35,654); 196,003 acres

**MODIS**

- 20071027 pm est MODIS Heat
- 20071027 @2320 IR Heat Perim
- Active Burning (10/28 @morning PDT)
- Last 12 hrs; Last 24 hrs

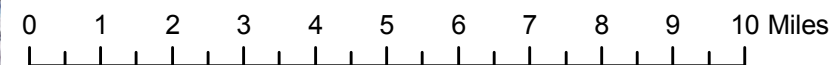
**Ownership**

- National Forest
- Non-National Forest

R5 FAM  
 Fire Behavior Branch, Predictive Services  
 McClellan, CA

with support from:  
 WFDSS  
 Wildland Fire  
 Decision Support System

RMRS  
 Rocky Mtn. Research Station  
 Note: Projection based on preliminary data



1:170,000

Note: Transparency softens the FSPRO colors