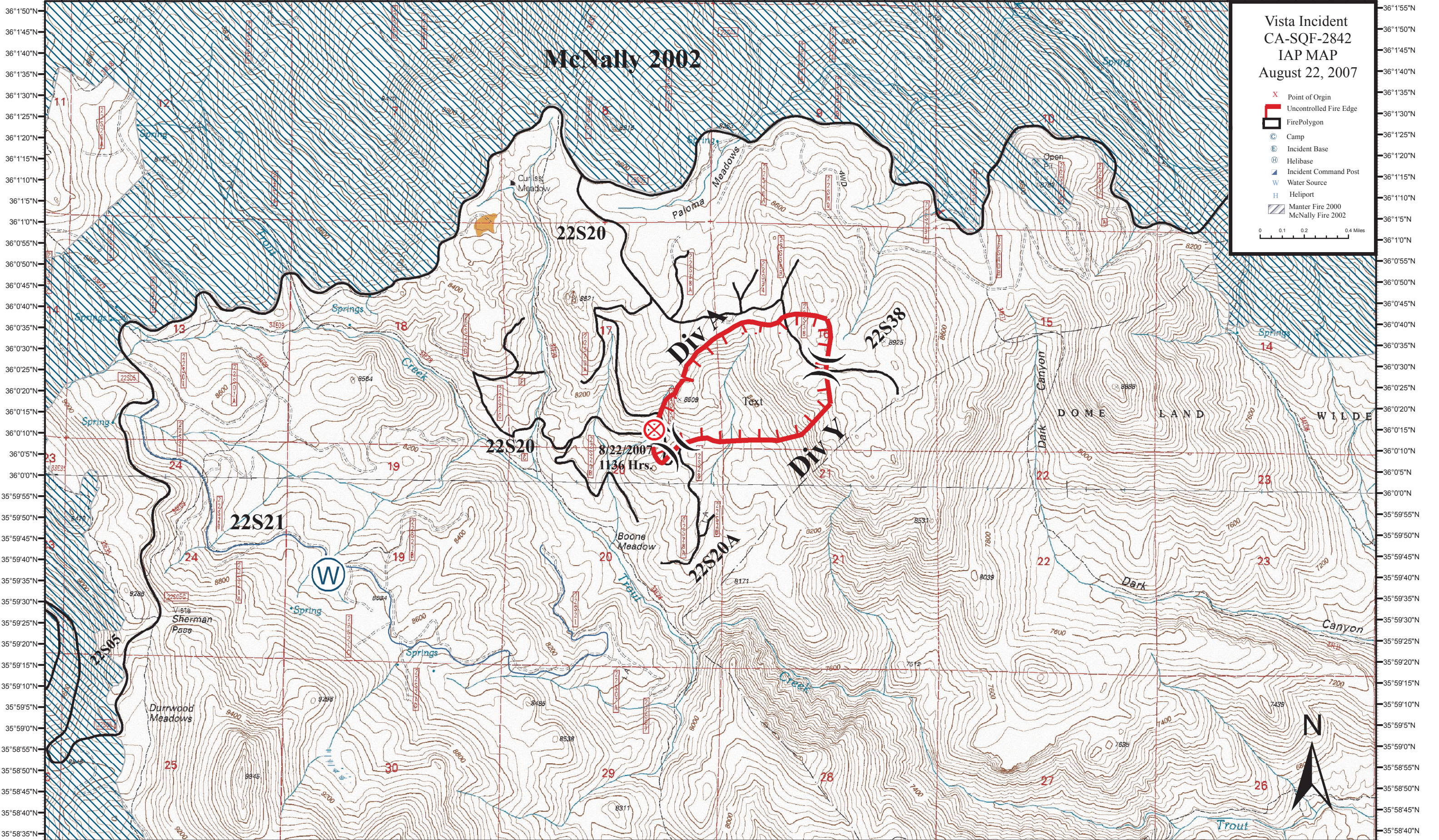


118°22'25"W 118°22'10"W 118°21'55"W 118°21'40"W 118°21'25"W 118°21'10"W 118°20'55"W 118°20'40"W 118°20'25"W 118°20'10"W 118°19'55"W 118°19'40"W 118°19'25"W 118°19'10"W 118°18'55"W 118°18'40"W 118°18'25"W 118°18'10"W 118°17'55"W 118°17'40"W 118°17'25"W 118°17'10"W 118°16'55"W 118°16'40"W 118°16'25"W 118°16'10"W



Vista Incident  
CA-SQF-2842  
IAP MAP  
August 22, 2007

- X Point of Origin
- Uncontrolled Fire Edge
- FirePolygon
- C Camp
- E Incident Base
- H Helibase
- Incident Command Post
- W Water Source
- H Helipoint
- Manter Fire 2000
- McNally Fire 2002

0 0.1 0.2 0.4 Miles

118°22'25"W 118°22'10"W 118°21'55"W 118°21'40"W 118°21'25"W 118°21'10"W 118°20'55"W 118°20'40"W 118°20'25"W 118°20'10"W 118°19'55"W 118°19'40"W 118°19'25"W 118°19'10"W 118°18'55"W 118°18'40"W 118°18'25"W 118°18'10"W 118°17'55"W 118°17'40"W 118°17'25"W 118°17'10"W 118°16'55"W 118°16'40"W 118°16'25"W 118°16'10"W