

August 23, 2007

WFDSS - FSPRO PROBABILITY: SQF VISTA FIRE (2007)  
7 DAYS (8/22 - 8/28) - 60m Res, 1000 Fire Sim: ERC: Blackrock, WINDS: Blackrock  
Perim: Est. from MODIS 20070822, Barrier: None  
[Notes: ]

SUMMIT  
(2003)

KERN  
(1994)

Golden Trout Wilderness

(1980)

BRODER/BECK WFU  
(2006)

CRAG  
(2004)

CLOVER  
(1980)

CRAG  
(2005)

South Sierra Wilderness

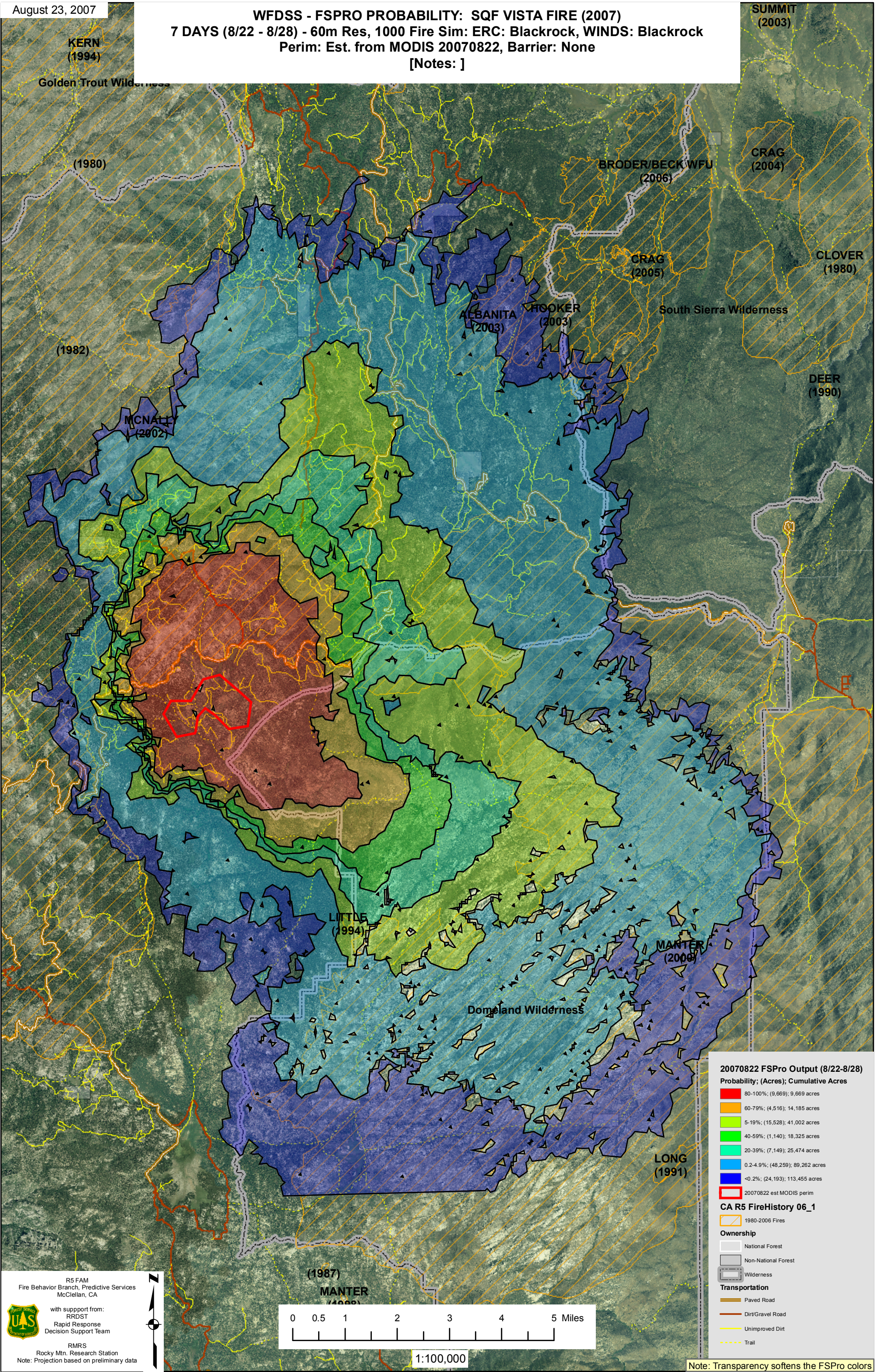
ALBANITA  
(2003)

HOOVER  
(2003)

DEER  
(1990)

(1982)

MCNALLY  
(2002)



**20070822 FSPro Output (8/22-8/28)**  
Probability; (Acres); Cumulative Acres

- 80-100%; (9,669); 9,669 acres
- 60-79%; (4,516); 14,185 acres
- 5-19%; (15,528); 41,002 acres
- 40-59%; (1,140); 18,325 acres
- 20-39%; (7,149); 25,474 acres
- 0.2-4.9%; (48,259); 89,262 acres
- <0.2%; (24,193); 113,455 acres
- 20070822 est MODIS perim

**CA R5 FireHistory 06\_1**

- 1980-2006 Fires

**Ownership**

- National Forest
- Non-National Forest
- Wilderness


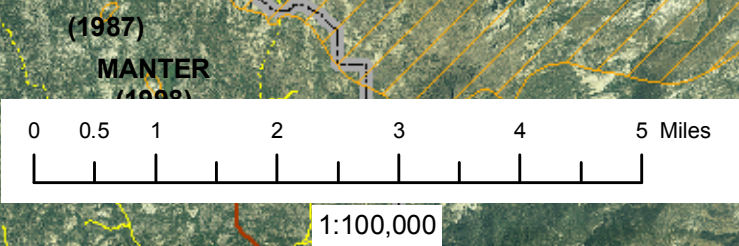
**Transportation**

- Paved Road
- Dirt/Gravel Road
- Unimproved Dirt
- Trail

R5 FAM  
Fire Behavior Branch, Predictive Services  
McClellan, CA

with support from:  
RRDST  
Rapid Response  
Decision Support Team

RMRS  
Rocky Mtn. Research Station  
Note: Projection based on preliminary data

Note: Transparency softens the FSPro colors