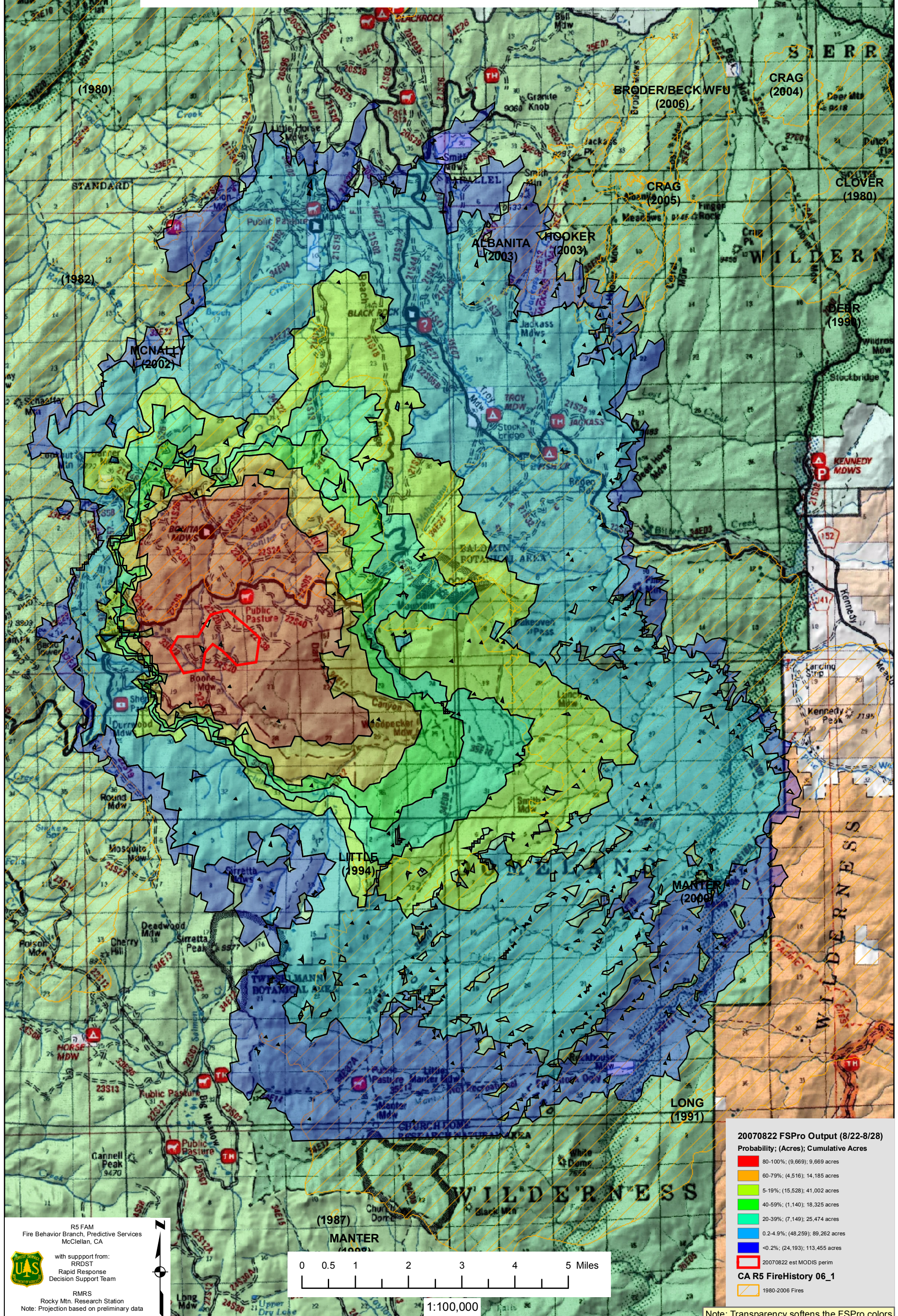


WFDSS - FSPRO PROBABILITY: SQF VISTA FIRE (2007)
7 DAYS (8/22 - 8/28) - 60m Res, 1000 Fire Sim: ERC: Blackrock, WINDS: Blackrock
Perim: Est. from MODIS 20070822, Barrier: None
[Notes:]

SUMMIT (2003)



R5 FAM
Fire Behavior Branch, Predictive Services
McClellan, CA
with support from:
RRDST
Rapid Response
Decision Support Team
RMRS
Rocky Mtn. Research Station
Note: Projection based on preliminary data



1:100,000

20070822 FSPro Output (8/22-8/28)
Probability; (Acres); Cumulative Acres

80-100%	(9,669); 9,669 acres
60-79%	(4,516); 14,185 acres
5-19%	(15,528); 41,002 acres
40-59%	(1,140); 18,325 acres
20-39%	(7,149); 25,474 acres
0.2-4.9%	(48,259); 89,262 acres
<0.2%	(24,193); 113,455 acres
20070822 est MODIS perim	
CA R5 FireHistory 06_1	
1980-2006 Fires	

Note: Transparency softens the FSPro colors