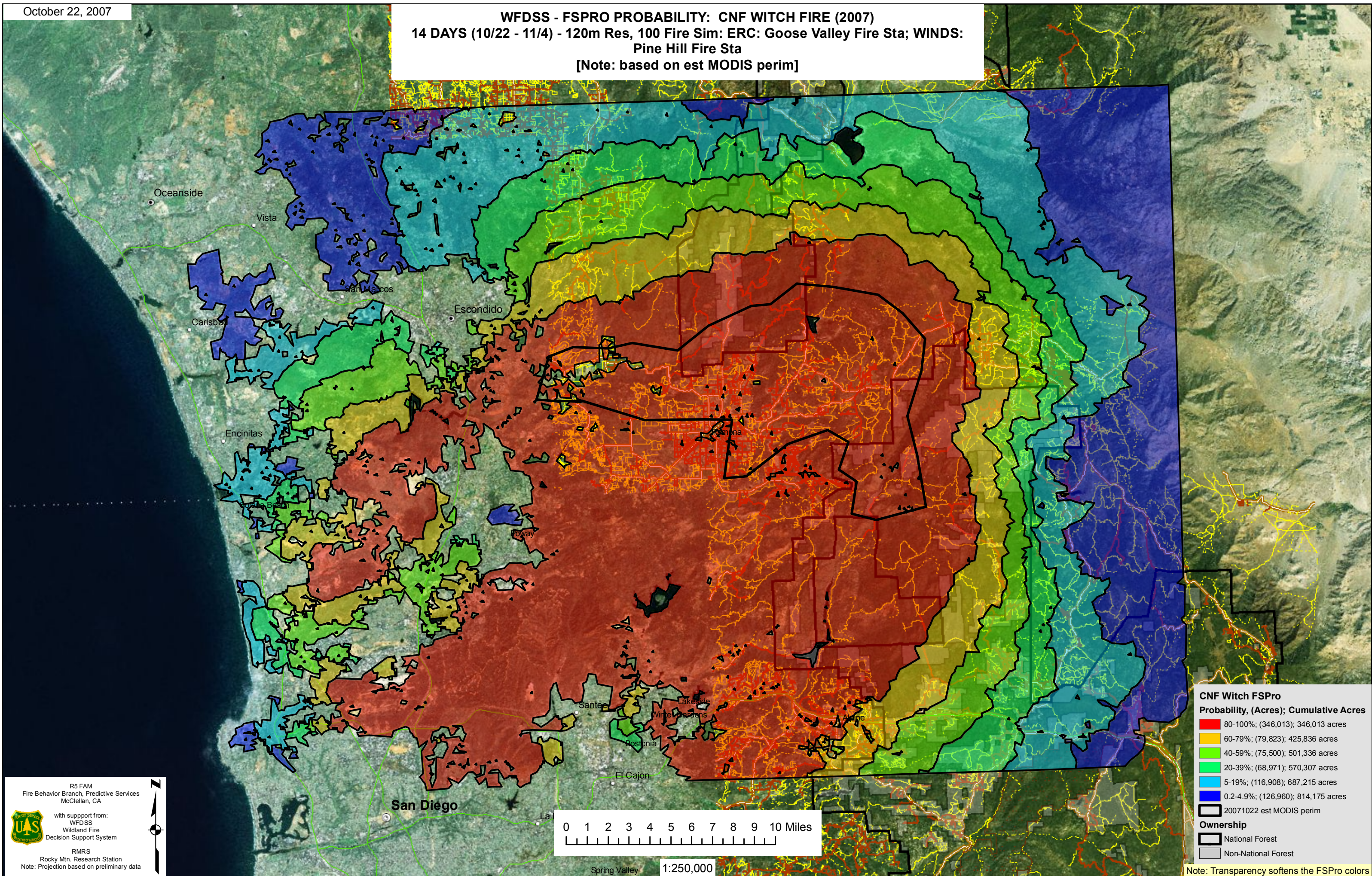


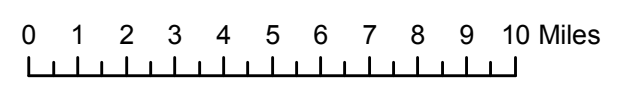
**WFDSS - FSPRO PROBABILITY: CNF WITCH FIRE (2007)**  
**14 DAYS (10/22 - 11/4) - 120m Res, 100 Fire Sim: ERC: Goose Valley Fire Sta; WINDS:**  
**Pine Hill Fire Sta**  
 [Note: based on est MODIS perim]



R5 FAM  
 Fire Behavior Branch, Predictive Services  
 McClellan, CA

with support from:  
 WFDSS  
 Wildland Fire  
 Decision Support System

RMRS  
 Rocky Mtn. Research Station  
 Note: Projection based on preliminary data



1:250,000

**CNF Witch FSPro**

Probability (%)	Acres	Cumulative Acres
80-100%	(346,013)	346,013 acres
60-79%	(79,823)	425,836 acres
40-59%	(75,500)	501,336 acres
20-39%	(68,971)	570,307 acres
5-19%	(116,908)	687,215 acres
0.2-4.9%	(126,960)	814,175 acres

20071022 est MODIS perim

**Ownership**

- National Forest
- Non-National Forest

Note: Transparency softens the FSPro colors