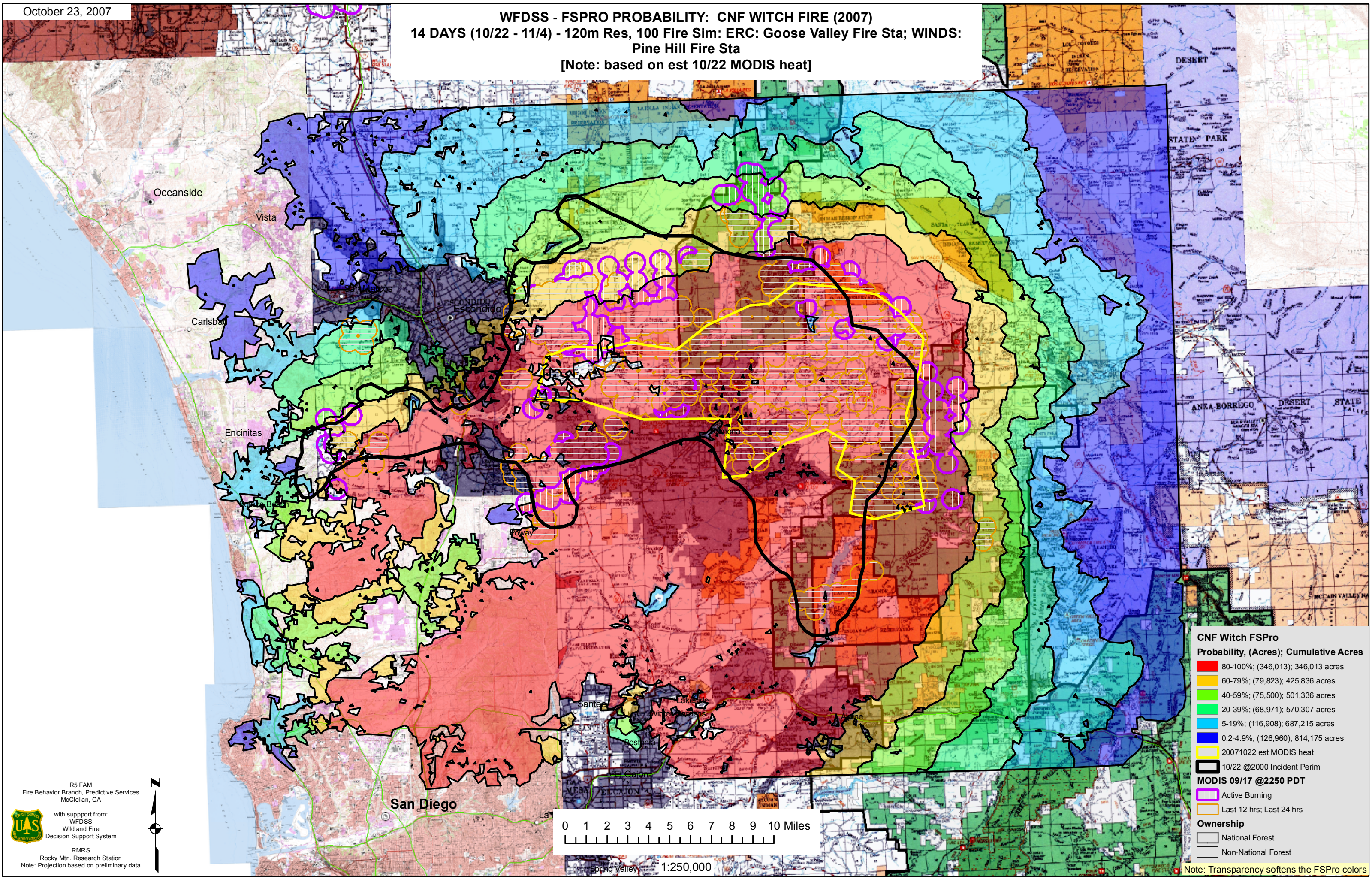


WFDSS - FSPRO PROBABILITY: CNF WITCH FIRE (2007)  
14 DAYS (10/22 - 11/4) - 120m Res, 100 Fire Sim: ERC: Goose Valley Fire Sta; WINDS:  
Pine Hill Fire Sta  
[Note: based on est 10/22 MODIS heat]



**CNF Witch FSPRO**

**Probability, (Acres); Cumulative Acres**

- 80-100%; (346,013); 346,013 acres
- 60-79%; (79,823); 425,836 acres
- 40-59%; (75,500); 501,336 acres
- 20-39%; (68,971); 570,307 acres
- 5-19%; (116,908); 687,215 acres
- 0.2-4.9%; (126,960); 814,175 acres

20071022 est MODIS heat

10/22 @2000 Incident Perim

**MODIS 09/17 @2250 PDT**

- Active Burning
- Last 12 hrs; Last 24 hrs

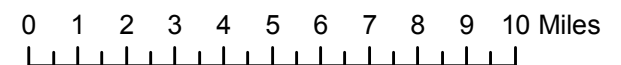
**Ownership**

- National Forest
- Non-National Forest

R5 FAM  
Fire Behavior Branch, Predictive Services  
McClellan, CA

with support from:  
WFDSS  
Wildland Fire  
Decision Support System

RMRS  
Rocky Mtn. Research Station  
Note: Projection based on preliminary data



1:250,000

Note: Transparency softens the FSPRO colors