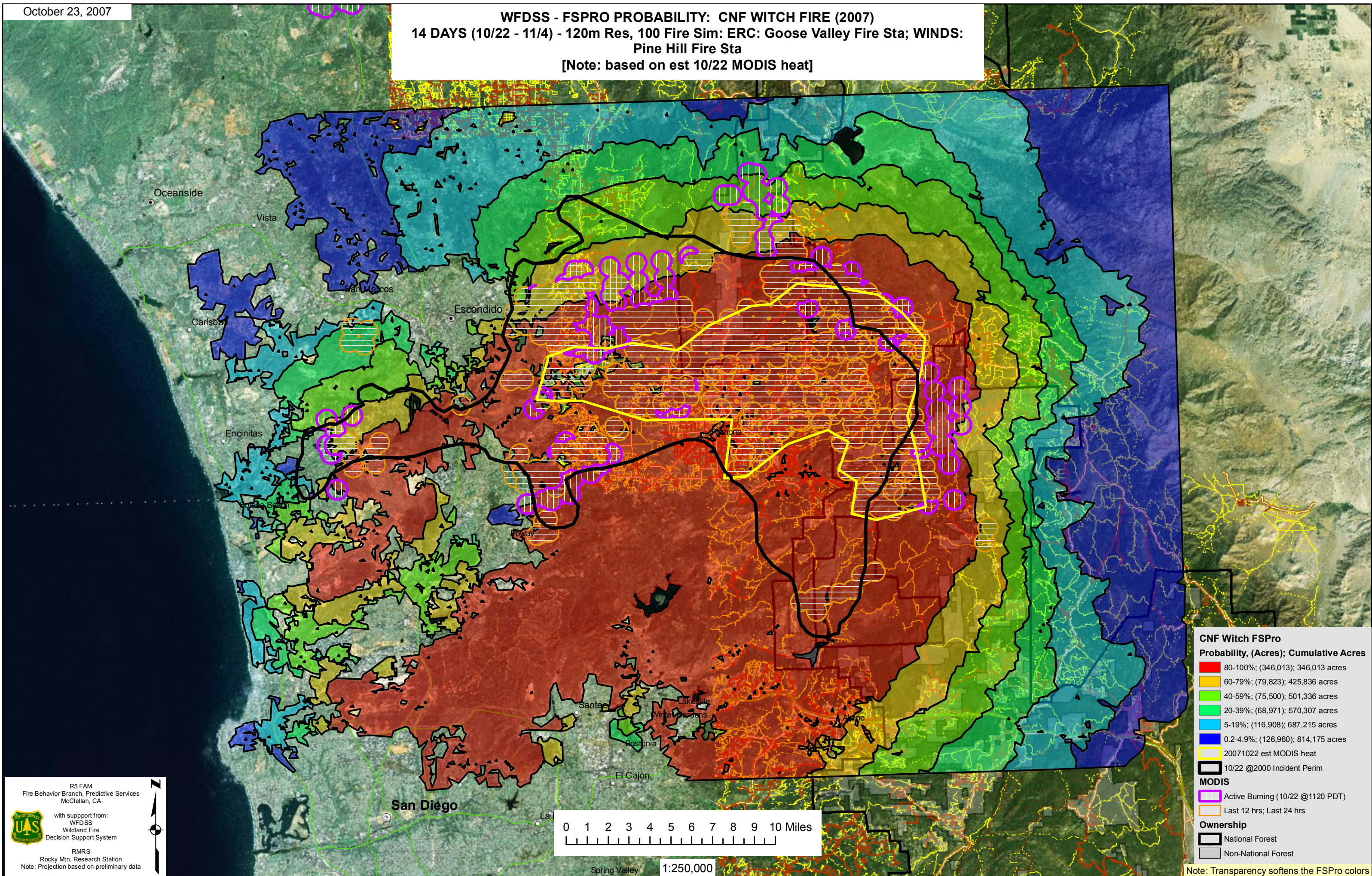


**WFDSS - FSPRO PROBABILITY: CNF WITCH FIRE (2007)**  
**14 DAYS (10/22 - 11/4) - 120m Res, 100 Fire Sim: ERC: Goose Valley Fire Sta; WINDS:**  
**Pine Hill Fire Sta**  
 [Note: based on est 10/22 MODIS heat]



**CNF Witch FSPRO**  
**Probability, (Acres); Cumulative Acres**

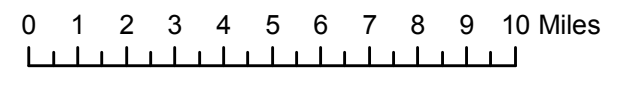
80-100%	(346,013); 346,013 acres
60-79%	(79,823); 425,836 acres
40-59%	(75,500); 501,336 acres
20-39%	(68,971); 570,307 acres
5-19%	(116,908); 687,215 acres
0.2-4.9%	(126,960); 814,175 acres

20071022 est MODIS heat  
 10/22 @2000 Incident Perim  
**MODIS**  
 Active Burning (10/22 @1120 PDT)  
 Last 12 hrs; Last 24 hrs  
**Ownership**  
 National Forest  
 Non-National Forest

R5 FAM  
 Fire Behavior Branch, Predictive Services  
 McClellan, CA

with support from:  
 WFDSS  
 Wildland Fire  
 Decision Support System

RMRS  
 Rocky Mtn. Research Station  
 Note: Projection based on preliminary data



1:250,000

Note: Transparency softens the FSPRO colors