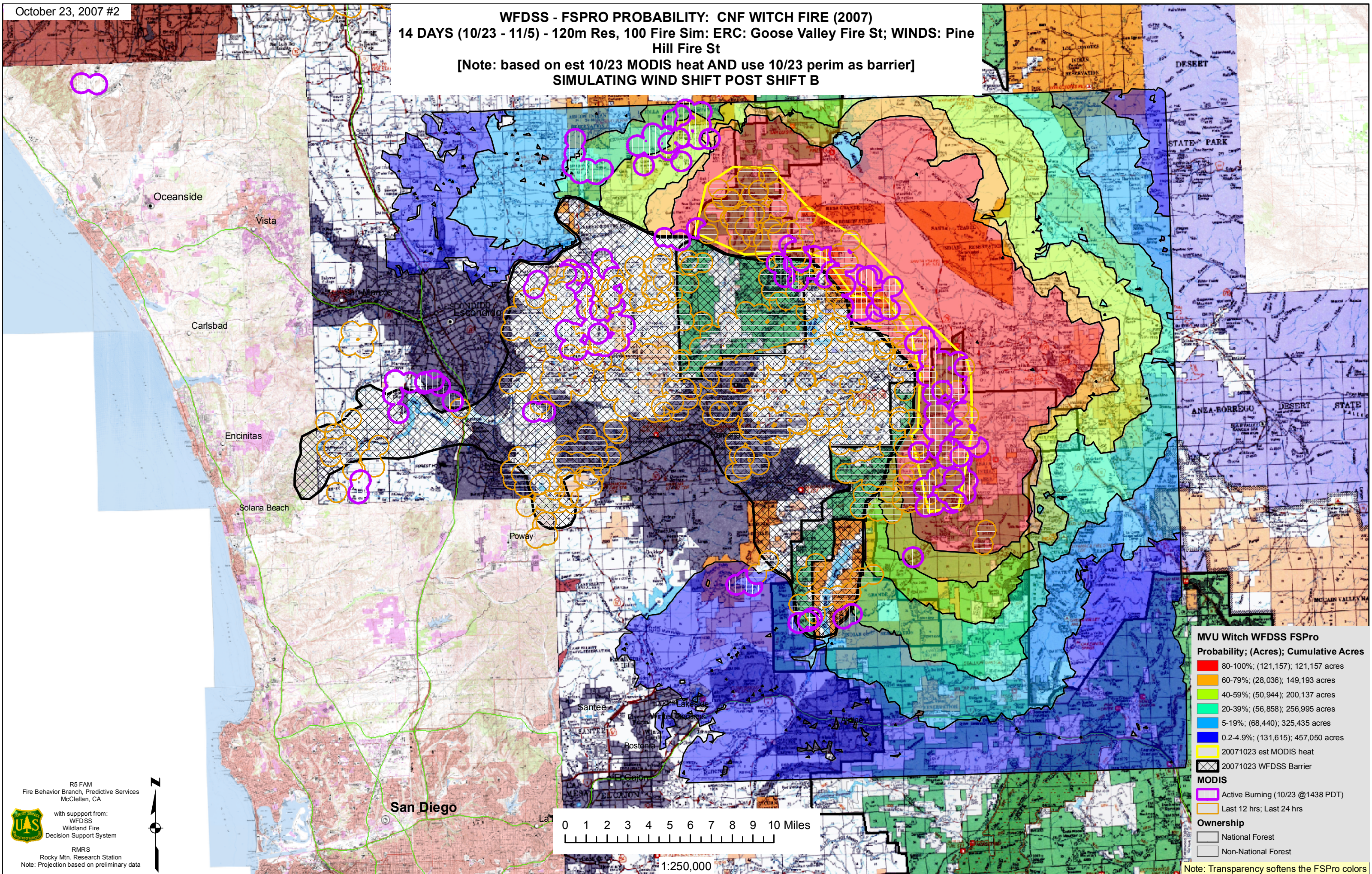


WFDSS - FSPRO PROBABILITY: CNF WITCH FIRE (2007) 14 DAYS (10/23 - 11/5) - 120m Res, 100 Fire Sim: ERC: Goose Valley Fire St; WINDS: Pine Hill Fire St

[Note: based on est 10/23 MODIS heat AND use 10/23 perim as barrier]
SIMULATING WIND SHIFT POST SHIFT B



MVU Witch WFDSS FSPro
Probability; (Acres); Cumulative Acres

- 80-100%; (121,157); 121,157 acres
- 60-79%; (28,036); 149,193 acres
- 40-59%; (50,944); 200,137 acres
- 20-39%; (56,858); 256,995 acres
- 5-19%; (68,440); 325,435 acres
- 0.2-4.9%; (131,615); 457,050 acres

20071023 est MODIS heat
20071023 WFDSS Barrier

MODIS

- Active Burning (10/23 @1438 PDT)
- Last 12 hrs; Last 24 hrs

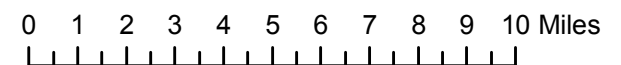
Ownership

- National Forest
- Non-National Forest

R5 FAM
Fire Behavior Branch, Predictive Services
McClellan, CA

with support from:
WFDSS
Wildland Fire
Decision Support System

RMRS
Rocky Mtn. Research Station
Note: Projection based on preliminary data



1:250,000

Note: Transparency softens the FSPro colors