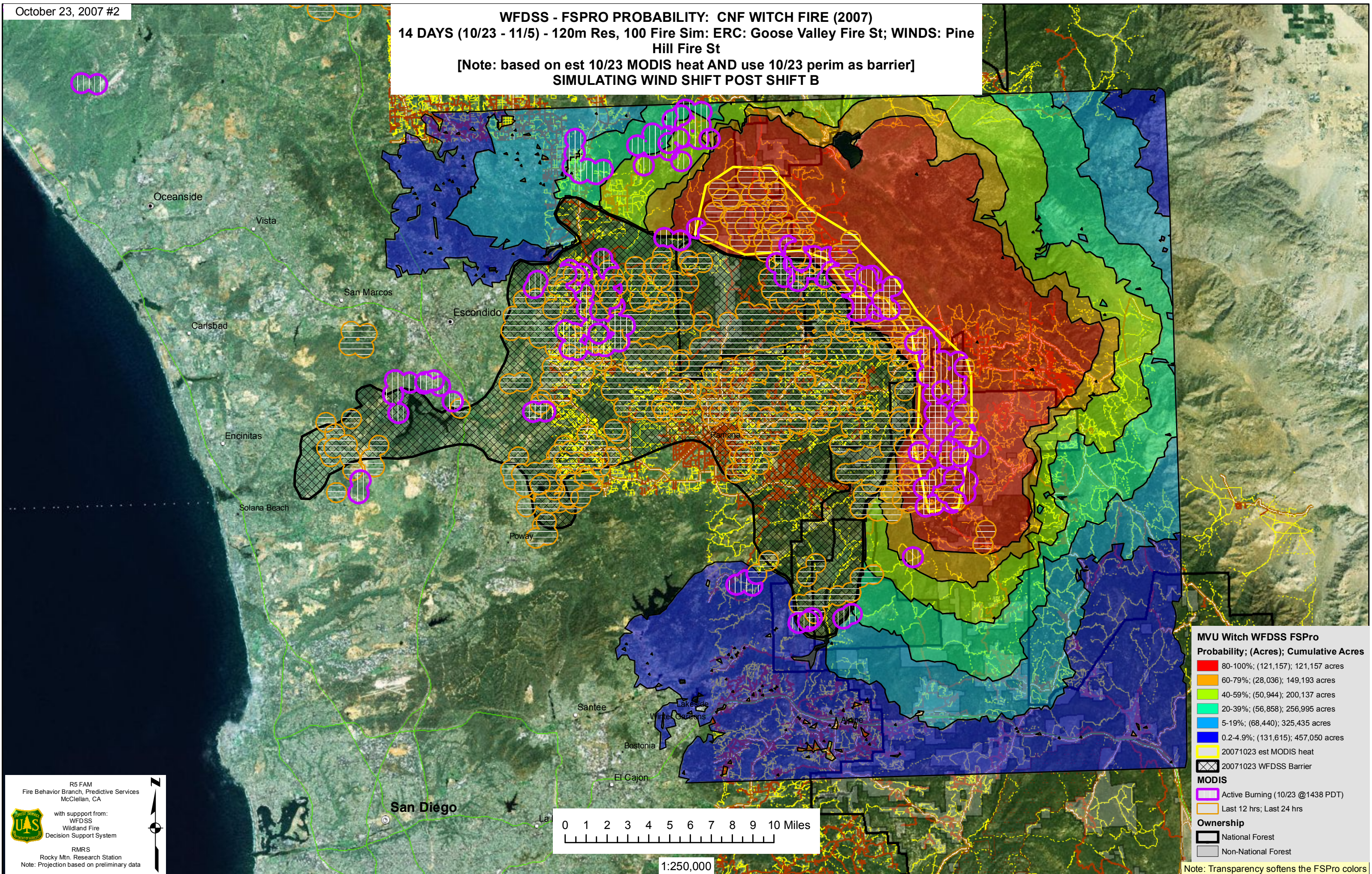


**WFDSS - FSPRO PROBABILITY: CNF WITCH FIRE (2007)**  
**14 DAYS (10/23 - 11/5) - 120m Res, 100 Fire Sim: ERC: Goose Valley Fire St; WINDS: Pine Hill Fire St**  
 [Note: based on est 10/23 MODIS heat AND use 10/23 perim as barrier]  
**SIMULATING WIND SHIFT POST SHIFT B**



**MVU Witch WFDSS FSPro**  
**Probability; (Acres); Cumulative Acres**

- 80-100%; (121,157); 121,157 acres
- 60-79%; (28,036); 149,193 acres
- 40-59%; (50,944); 200,137 acres
- 20-39%; (56,858); 256,995 acres
- 5-19%; (68,440); 325,435 acres
- 0.2-4.9%; (131,615); 457,050 acres

20071023 est MODIS heat

20071023 WFDSS Barrier

**MODIS**

- Active Burning (10/23 @1438 PDT)
- Last 12 hrs; Last 24 hrs

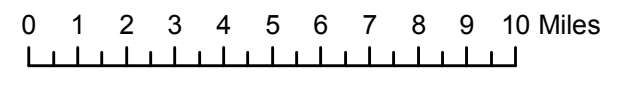
**Ownership**

- National Forest
- Non-National Forest

R5 FAM  
 Fire Behavior Branch, Predictive Services  
 McClellan, CA

with support from:  
 WFDSS  
 Wildland Fire  
 Decision Support System

RMRS  
 Rocky Mtn. Research Station  
 Note: Projection based on preliminary data



1:250,000

Note: Transparency softens the FSPro colors