



# Witch Creek - McCoy Fire, CA

T1\_A\_071022-1\_jk 22 October 2007

## Major Values-at-Risk per FSPRO Fire Spread Probabilities: 14 days as of 21 October 2007

Fire Perimeter: 22 Oct AM

MODIS Points: 22 Oct PM

22 October 2007

21 October 2007

Prior 6 days

Past Fires 2000-2006

### FSPRO Fire Spread Probabilities

> 80 %

60 - 80 %

40 - 60 %

20 - 40 %

5 - 20 %

1 - 5 %

< 1 %

RAWS Stations

Building Clusters: San Diego county

Water: Dams > 100af

Water Supply: Intakes

Water Treatment Plants

Water Pipeline - Aqueduct - Canal

Powerlines

Industrial Plant

Power Pylon

Power or Pumping Substation

Communication Towers

Oil & Gas Transmission Lines

Airports

Airport Runways

Ski Resort Cables

Hospitals

Schools

HAZMAT: Mines

HAZMAT: Superfund Sites

HAZMAT: Hazardous Waste

Other Landmarks

Interstates

Major Roads

Railways

County Boundary

### Jurisdiction

Private

State

BLM

Other Federal

DOD

NPS

USFS

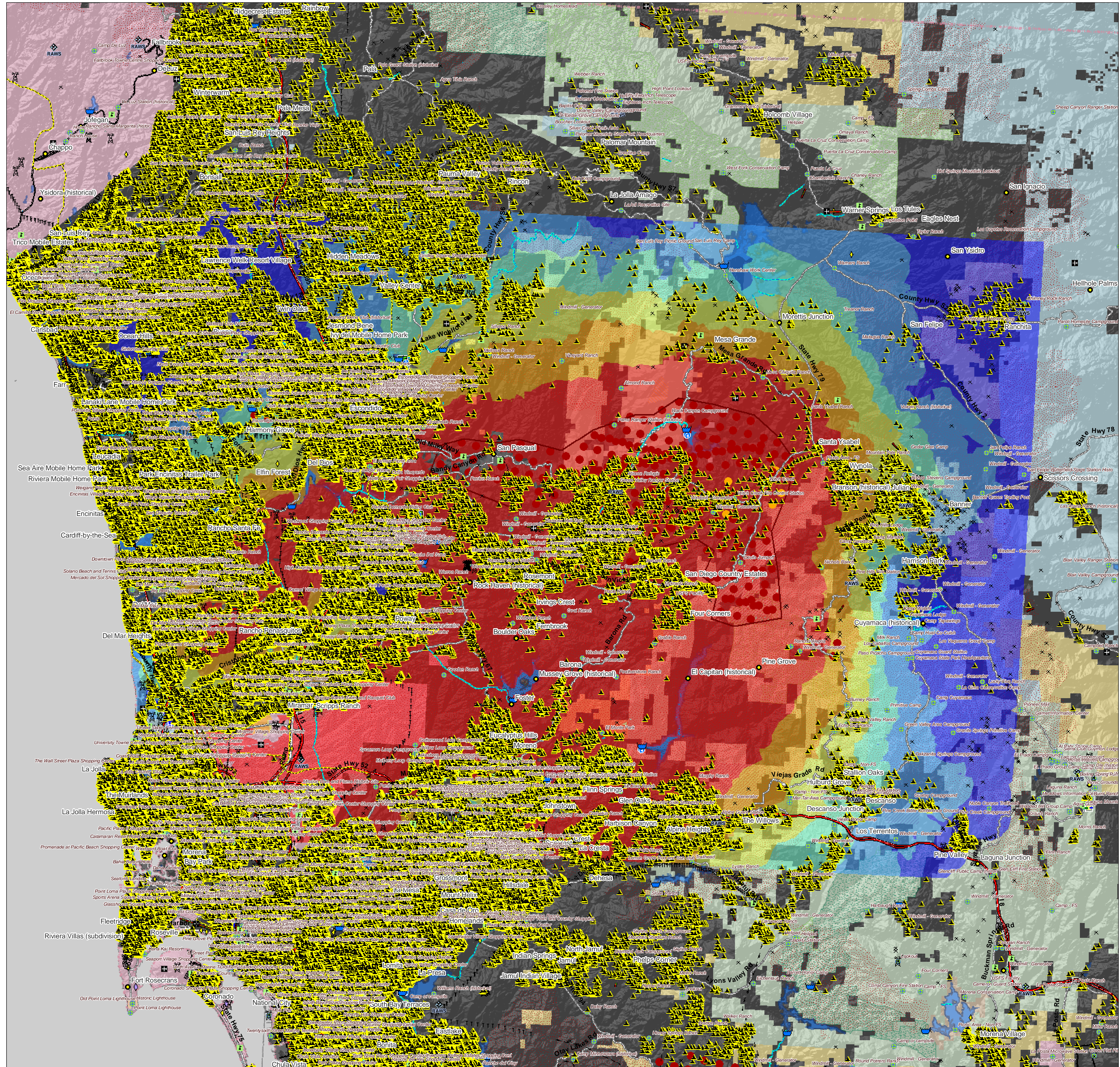
Inventoried Roadless

Designated Wilderness

Experimental RNA

Primitive RNA

National Monuments



\*Building Clusters represent the center of parcels where county assessor records indicate taxable improvements are present. One or more structures and other improvements may exist proximate to these point locations.

CAUTION: Defer to air photos or local knowledge for exact structure and other feature locations.

1:110,000

