

**ZACA FIRE
RICHARDSON ZONE
Incident Action Plan
8/24/07 Day Shift
Friday
0600-1800**



California Interagency Incident Management Team 1

INCIDENT OBJECTIVES	1. Incident Name ZACA TWO	2. Date Prepared 8/23/07	3. Time 2200
4. Operational Period DAY August 24, 2007 0600 - 1800			
5. Core Values-All Incidents, All the time ★ Safety is a core value and is to be integrated into all incident activities.			
6. General Control Objectives for the Incident (include alternatives) Operational Objectives: <ul style="list-style-type: none"> • Keep Fire: <ul style="list-style-type: none"> ★ North of Catway Rd. (Zaca Ridge Rd) and the line running from Drop Point 12 south east to Buckhorn Road to Divide Peak ★ West of the Matilija Wilderness to Potrero Seco to Hwy 33 ★ South of Sierra Madre Ridge Road. ★ East of Peak Mountain to Bald Mountain to Figueroa Mountain Peaks. • Minimize loss of property and infrastructure • Utilize the full range of suppression strategies as weather, fuels and terrain permit Management Objectives <ul style="list-style-type: none"> ★ Fiscal: Ensure activities are cost effective and reflect jurisdictional responsibilities. Provide for proactive Community, Tribal, and Public/Media Relations ★ Identify and mitigate impacts to cultural and natural resources 			
7. Priorities <ul style="list-style-type: none"> ★ <u>Live Oak Zone</u>: Division VV, ZZ ★ <u>Richardson Zone</u>: Divisions GG, FF, EE, AA, BB 			
8. General Safety Message SEE HEALTH AND SAFETY MESSAGE			
8. Attachments (mark if attached)			
<input checked="" type="checkbox"/> Incident Weather Forecast <input checked="" type="checkbox"/> Fire Behavior Forecast <input checked="" type="checkbox"/> Organization Assignment List - ICS 203 <input checked="" type="checkbox"/> Division Assignment Lists - ICS 204 <input checked="" type="checkbox"/> Air Operations Summary - ICS 220	<input checked="" type="checkbox"/> Health and Safety Message <input checked="" type="checkbox"/> Incident Action Plan Safety Analysis - ICS 215a <input checked="" type="checkbox"/> Incident Radio Communication Plan - ICS 205/ Phone list <input checked="" type="checkbox"/> Medical Plan - ICS 206 <input checked="" type="checkbox"/> IAP map	<input checked="" type="checkbox"/> Incident Phone List <input checked="" type="checkbox"/> Base Camp/Ozena Spike Map <input checked="" type="checkbox"/> Unit Log - ICS 214 <input checked="" type="checkbox"/> Human Resources Message <input checked="" type="checkbox"/> Transportation Map	
9. Prepared by (Planning Section Chief)	10. Approved by (Incident Commander)		

ORGANIZATION ASSIGNMENT LIST		9. Operations Section		
1. Incident Name Zaca Fire – Richardson Zone		Operations Chief Deputy Operations	Geoff Wilford Dave McCandliss	
2. Date 8/23/2007	3. Time 2300			
4. Operational Period DAY August 24, 2007 0600-1800		Planning Ops.	Rich Olson	
5. Incident Commander & Staff		a. Branch XXIII		
Incident Commander	Rich Hawkins	Branch Director	Mark von Tillow, Larry Turman (T)	
Deputy IC	Jerry McGowan	Division	AA	Val Linch
Information Officers	Chuck Dickson, Connie Chaney	Division	BB	Dave Main
Human Resource Specialist	Diane Simpson	Division		
Safety Officer	Jennifer Boyd, Linda Szczepanik	Division		
Liaison Officer	Ranger Dorn	Division		
		Group		
6. Agency Representatives		b. Branch XXV		
Agency	Name	Branch Director	Greg Black	
USFS	Kathleen Phelps	Division	CC/DD	P. Henrich, D. Powers
SBC	Craig Thomas	Division	EE	Jeff Ohs
		Division	North FF	Robert Doyle, Don Riise (T)
OES	Brian Woodbeck			
CAL FIRE	Greg Pisano / Arnie White	c. Branch XXVII		
KRN Fire	Bob Kleinhoff	Branch Director	Tom McGuire	
VNC Fire	Rod Megli	Division	South FF	John Flores
SB SO	Joe Smith / Paul Weirum	Division	GG/HH	Stan Hart
VNC SO	Bruce Norris			
CHP VNC	Bob Granzerz	d. Contingency Branch		
CHP Santa Maria	Mat Olsen	Branch Director	Valdo Calvert	
CALTRANS VNC	Mike Tallbot	Group	HWY 33 East	Mark German
CALTRANS Cuyama	Frank Sulland	Group	HWY 33 West	Rick Burroughs / Don Wright (T)
BLM	Debbie Santiago / Dave Brinsfield	Group	Roads	Greg Gates
CCC	Jim Teegardin			
		f. Firing Group		
		Firing	Supervisor	Ron Bollier
7. Planning Section		g. Rehab Group		
Chief /Deputy	Gary Montgomery/Gary Risling	Rehab Coordinator		Mike Shorrock
Computer Specialist	Jim Ott	Division		Ed Hardy
Situation Unit	Dan Ochocki / Keiji Seta (T)	h. Air Operations Branch		
Resource Unit	M. Fountain, M. Murphy (T), T. Lewis (T), Al Yanagisawa(T)	Air Operations Branch Director		Kent Haskins
Meteorologist	Cindy Bean	Helibase Manager		Curt Warner, Arnold Ramirez(T)
Fire Behavior Analyst	Kelly Martin	Air Attack Supervisor		Russ Gripp
Demobilization Unit	John Roberts	Air Support Supervisor		Jason Nava, Jerry Disney
Documentation Unit		Helicopter Coordinator		Stan Kubota
Training Specialist	William Reynolds, Julie Buel	10. Finance Section		
Resource Advisor	Lloyd Simpson	Chief		Laurie Beck, Robbin Ekman (M)
	Jim Roche	Time Unit		
	John Madden			
8. Logistics Section		Procurement Unit		
Chief Deputy	Dan Turner	Compensation/Claims		Liz Roberts
Supply Unit Leader	Dennis Bouslaugh	Cost Unit		Joan Disney
Facilities Unit	Tim Gardner			
Ground Support Unit	Dave Trussell			
Communications Unit	Kody Kerwin	Prepared by (Resource Unit Leader) Al Yanagisawa (T)		
Medical Unit	Matt Lipson			
Food Unit	Ricky Washington			
Security	Clint Robbins			

Incident Weather Forecast

FORECAST NO: 17 D

NAME OF INCIDENT: Zaca 2 - Richardson Zone

PREDICTION FOR: Friday – Day Shift

UNIT: LPF

SHIFT DATE: Aug 24, 2007

SIGNED:

TIME AND DATE 1700 PDT Thursday

FORECAST ISSUED: August 23, 2007

Cindy Bean
Incident Meteorologist
Zaca 2

WEATHER DISCUSSION:

Weak high pressure will be over the region today and Saturday. This will bring a light southerly flow aloft with terrain driven winds. Cooler and more humid conditions are expected to develop by Sunday and Monday as moisture from the remnants of Hurricane Dean move across Southern California.

WEATHER FORECAST:

WEATHER: Sunny.

MAX TEMPS:

Ridgetops/Upper Slopes: 85 – 90

Lower Slopes/Drainage: 90 – 97

MIN HUMIDITY: 12-20%

20 FT WINDS:

RIDGETOP - 0600-0900 PDT...North to Northeast 4-8 mph.
0900-1900 PDT...South to Southwest 5-8 mph with gusts to 12 mph.

SLOPE/VALLEY - Till 0900 PDT.....East or Downslope/Down valley 3-6 mph.
0900-1900 PDT...Upslope/upvalley 5-10 mph. Gusts to 15 mph.

MIXING HEIGHT: Surface inversion around 5500 ft msl lifting around 1000 PDT.
Mixing height near 10,000 ft msl in the afternoon.

TRANSPORT WIND: South 5-10 mph.

Friday Night:

Clear. Lows 60-65 ridges, 52-58 valleys. Max Relative Humidity 40-50% ridges...55-65% lower slopes and drainages. Ridge Winds...Northeast 4-8 mph. Slope/Drainage winds downslope 2-5 mph.

Saturday: Sunny...a few clouds moving in late in the day. Highs 85-90 upper slopes/ridges...90-97 lower slopes/valleys. Min RH: 12-20%. Lows 58-66 ridges...48-53 lower slopes/valleys. Max RH: 45-55% ridges...60-70% lower slopes/drainages. Ridge winds: Northeast to East 3-7 mph night and morning. South to southwest 5-10 mph in the afternoon. Typical diurnal slope/valley winds.

Sunday and Monday: Partly cloudy. Highs 78-85 upper slopes/ridges...82-90 lower slopes/valleys. Lows 52-56 lower slopes/valleys ...58-65 upper slopes/ridgetops. Min RH 22-32%. Max RH 50-60% ridges...65-85% lower slopes/drainages. Ridgetop winds southwest to west 6-12 mph. Typical diurnal slope/valley winds.

Tuesday: Mostly clear. Highs 80-88 upper slopes/ridges...88-95 lower slopes/valleys. Lows 58-65 ridges...52-56 lower slopes/valleys. Min RH 15-25%. Max RH 45-55% ridges...60-70% lower slopes/drainages. Ridgetop winds southwest 5-10 mph. Typical diurnal slope/valley winds.

FIRE BEHAVIOR FORECAST

FORECAST NUMBER: 27

TYPE OF FIRE: WILDFIRE

FIRE NAME: ZACA – Richardson Zone

OPERATIONAL PERIOD: 8/24/2007

DATE ISSUED: 8/22/07

TIME ISSUED: 2000h

UNIT: SANTA BARBARA COUNTY /LOS PADRES NF

SIGNED: *Isi Kelly Martin*

MIN RH: 12 - 20% - ***SIMILAR TO YESTERDAY***

MAX TEMP: 81 - 88 Ridgetops, 5 degrees higher in the valley bottoms ***SIMILAR TO YESTERDAY***

WINDS (20 FT): NNE in the morning becoming SSW 5-8G15 ***CHANGING DIRECTIONS***

GENERAL: *CHANGE IN GENERAL WIND DIRECTION TO THE SOUTH/SOUTHWEST.* Temperature and humidities remain similar to the last several days. The SSW influence will affect the north edge of the fire from the upper slopes of Sisqouc drainage east along the north edge to Ozena spike. Winds will be felt most along the upper slopes of the Sisqouc drainage and the area of Brubaker canyon.

Branch XXIII:

Division AA/BB – Diurnal winds will dominate as daytime heating will enhance upslope/upcanyon winds. The SSW winds will enhance diurnal winds on the upper 1/3 of the slopes. Slope driven runs are still likely in patches of unburned fuels especially in the late afternoon. Fuels in the lower third of the drainage bottom are becoming sparse and discontinuous and less susceptible to fire spread.

Branch XXV

Division CC/DD/EE– Mop-up and patrol along these divisions has limited the potential for flare-ups near the line. Flare-ups are still possible interior where large islands of unburned vegetation remain.

Branch XXVII:

Division FF North: General SSW winds could play a factor in erratic fire behavior as these winds will oppose upcanyon winds from Cuyama drainage along HWY33 at the mouth of Brubaker Canyon. The mouth of Brubaker Canyon widens after the ranch house and becomes less susceptible to spots as the canyon begins to round out towards Cuyama drainage. Watch for very erratic winds (beginning by 1100h) that could still throw spots on the south aspect of Brubaker canyon during firing operations.

Division FF South: Firing operations will continue from the upper slopes and canyons, down to the toe slopes along the base of Cuyama drainage along HWY33. Smoke columns should pick up upper level SSW winds and flow towards the NNE across the Cayman drainage towards the “Badlands”. Fuels in the “Badlands” are not very receptive to spots due to sparse discontinuous fuels. Watch for flare-ups in the green unburned and partially burned fuels along the road from Ozena spike to DP 111.

Division GG – Mop-up and patrol along both these divisions has limited the potential for flare-ups near the line. Flare-ups are still possible interior where large islands of unburned fuel remain.

AIR OPERATIONS: Expect good visibility around Richardson Helibase. Firing operations will produce thick smoke and may limit fix wing operations where production is greatest.

SAFETY

- ✓ Firing operations will generate high fireline intensities
- ✓ Active burning conditions should develop by 1000h.
- ✓ As firing progress, it is important to be continually aware of the fire’s status and location, your location in relation to drainages/canyons and the fire, and how fire behavior and weather are changing.
- ✓ Flagging placed along HWY 33 gives a very good indication of wind direction and speed throughout this much dissected part of the fire – great idea!!!

DIVISION ASSIGNMENT LIST		1. Branch XXIII		2. Division/Group AA			
3. Incident Name Zaca Fire – Richardson Zone		4. Operational Period Day Shift Date: 08/24/2007 Time: 0600 - 1800					
5. Operations Personnel							
Operations Chief	Geoff Wilford Dave McCandliss	Division/Group Supervisor		Val Lynch			
Branch Director	Mark von Tillow / Larry Turman (T)	Air Attack Supervisor No.		Russ Gripp			
6. Resources Assigned This Period							
Strike Team/Task Force/ Resource Designator	Leader	Number Persons	Trans Needed	Drop Off PT/Time	Pick Up PT/Time		
CRW1 Democrat	Randy Griffin	15	N	Pine Spike 0700	Pine Spike per DIVS		
CRW1 Crane Valley	Chuck Berner	20	N	Pine Spike 0700	Pine Spike per DIVS		
CRW1 Texas Canyon	John Armstrong	21	N	Pine Spike 0700	Pine Spike per DIVS		
CRW1 Dalton	Luis Ocampo	21	N	Pine Spike 0700	Pine Spike per DIVS		
CRW1 Sierra	Ken Jordan	20	N	Pine Spike 0700	Pine Spike per DIVS		
CRW1 ST ZACA 1G	J. Estrada, Peters Lincoln (T)	21	N	Pine Spike 0700	Pine Spike per DIVS		
ENG S/T 4660 C	Larry Peabody	26	N	Pine Spike 0700	Pine Spike per DIVS		
DOZ1 24 hr Price (E-10228)	Jim Leon	1	N	Pine Spike 0700	Pine Spike per DIVS		
LOWB Brokus (E-10055)	Jordan Simpson	1	N	Pine Spike 0700	Pine Spike per DIVS		
DOZ2 24 hr AG Const (E-10012)	Tom Brady	1	N	Pine Spike 0700	Pine Spike per DIVS		
LOWB Stevens (E-10054)	Greg Mallcus	1	N	Pine Spike 0700	Pine Spike per DIVS		
WT2 Aqua Express #3 (E-10299)	Mike Barrett	1	N	Pine Spike 0700	Pine Spike per DIVS		
WT2 Bennett (E-10016)	Dean Cordray	1	N	Pine Spike 0700	Pine Spike per DIVS		
EMTB	Karl Sonnberger	1	N	Pine Spike 0700	Pine Spike per DIVS		
EMTP	Rodd Potts	1	N	Pine Spike 0700	Pine Spike per DIVS		
DOZB	Hal Luedtke	1	N	Pine Spike 0700	Pine Spike per DIVS		
DOZB	Richard Lidell	1	N	Pine Spike 0700	Pine Spike per DIVS		
FOBS	Paul Lombardo	1	N	Pine Spike 0700	Pine Spike per DIVS		
FOBS	Tomas Gonzales	1	N	Pine Spike 0700	Pine Spike per DIVS		
SOFR (Covering AA and BB)	Don Kearney	1	N	Pine Spike 0700	Pine Spike per DIVS		
7. Control Operations Complete direct and indirect line between Pine Spike and Hurricane Spike. Patrol and mop up 100 feet interior.							
8. Special Instructions Return all 5 gallon burn mix fuel containers to Drop Points for backhaul, or return them to Supply at Richardson ICP. Backhaul all trash and refuse daily. Sites marked with blue plus red and white striped flagging together should be avoided. CAFS apparatus: avoid using foam on and adjacent to rock outcrops and rock monoliths. Areas accessed by Buckhorn and Sierra Madre Ridge Roads have sensitive cultural values. Do not disturb artifacts or climb on rock formations. The Sisquoc River is habitat for endangered steelhead trout. Avoid using or causing contamination of the water. Safety Officer covering Division AA and Division BB							
9. Division/Group Communication Summary							
Function	Frequency	System	Channel	Function	Frequency	System	Channel
Command	Rx 168.1000 N Tx 170.4500 N Tone 123.0	NIFC C-2 RPT	2				
Tactical	173.9125 N	R5-TAC-4	3	Air to Ground	172.8125 N	AIR GND 1	6
Prepared By (Resource Unit Leader)		Approved By (Planning Sect. Ch.)		Date		Time	
Michael P. Murphy		Gary Montgomery		08/23/2007		2250	

DIVISION ASSIGNMENT LIST		1. Branch XXV		2. Division/Group CC / DD			
3. Incident Name Zaca Fire – Richardson Zone		4. Operational Period Day Shift Date: 08/24/2007 Time: 0600 - 1800					
5. Operations Personnel							
Operations Chief	Geoff Wilford	Division/Group Supervisor		Pedro Henrich / Dennis Powers			
Branch Director	Greg Black	Air Attack Supervisor No.		Russ Gripp			
6. Resources Assigned This Period							
Strike Team/Task Force/ Resource Designator	Leader	Number Persons	Trans Needed	Drop Off PT/Time	Pick Up PT/Time		
CRW2 Cobra #1	B. Runningcrane	20	N	ICP / 0600	ICP per DIVS		
ENG S/T 6419C	D.Stevens/ D.Arena (T)	19	N	ICP / 0600	ICP per DIVS		
WT2 24 hr S. Valley (E-10057)	Gary Bettis	1	N	ICP / 0600	ICP per DIVS		
EMTP	Matt Cobb	1	N	ICP / 0600	ICP per DIVS		
EMTB	Jim Clark	1	N	ICP / 0600	ICP per DIVS		
SOFR	Robert Weaver	1	N	ICP / 0600	ICP per DIVS		
7. Control Operations Continue to improve line, mop up and monitor the green islands on the interior of the burn.							
8. Special Instructions Return all 5 gallon burn mix fuel containers to Drop Points for backhaul, or return them to Supply at Richardson ICP. Backhaul all trash and refuse daily. Sites marked with blue plus red and white striped flagging together should be avoided. CAFS apparatus: avoid using foam on and adjacent to rock outcrops and rock monoliths. Areas accessed by Buckhorn and Sierra Madre Ridge Roads have sensitive cultural values. Do not disturb artifacts or climb on rock formations. The Sisquoc River is habitat for endangered steelhead trout. Avoid using or causing contamination of the water.							
9. Division/Group Communication Summary							
Function	Frequency	System	Channel	Function	Frequency	System	Channel
Command	Rx 168.1000 N Tx 170.4500 N Tone 123.0	NIFC C-2 RPT	2				
Tactical	173.9625 N	R5 TAC 5	4	Air to Ground	172.8125 N	AIR GND 1	6
Prepared By (Resource Unit Leader) Michael P. Murphy ICS 204		Approved By (Planning Sect. Ch.) Gary Montgomery		Date 08/23/2007	Time 2130 NFES 1328		

DIVISION ASSIGNMENT LIST		1. Branch XXV		2. Division/Group EE			
3. Incident Name Zaca Fire – Richardson Zone		4. Operational Period Day Shift Date: 08/24/2007 Time: 0600 - 1800					
5. Operations Personnel							
Operations Chief	Geoff Wilford Dave McCandliss	Division/Group Supervisor		Jeff Ohs			
Branch Director	Greg Black / Larry Turman	Air Attack Supervisor No.		Russ Gripp			
6. Resources Assigned This Period							
Strike Team/Task Force/ Resource Designator	Leader	Number Persons	Trans Needed	Drop Off PT/Time	Pick Up PT/Time		
CRW2 Cobra 5	Eddie Chapman Michael Bray (T)	20	N	ICP / 0600	ICP per DIVS		
ENG E-26	John Lugo	18	N	ICP / 0600	ICP per DIVS		
WT2 24hr Holt Water (E-10217)	Larry Miller	1	N	ICP / 0600	ICP per DIVS		
EMTB	John Godwin	1	N	ICP / 0600	ICP per DIVS		
EMTB	Tim Edgmon	1	N	ICP / 0600	ICP per DIVS		
SOFR (Cover EE and North FF)	Jim Mackensen	1	N	ICP / 0600	ICP per DIVS		
SOFR (T) (Covering EE and North)	Brett Worthington	1	N	ICP / 0600	ICP per DIVS		
7. Control Operations Continue to improve line, mop up and monitor and monitor the green islands on the interior of burn.							
8. Special Instructions Return all 5 gallon burn mix fuel containers to Drop Points for backhaul, or return them to Supply. Backhaul all trash and refuse daily. Sites marked with blue plus red and white striped flagging together should be avoided. CAFS apparatus: avoid using foam on and adjacent to rock outcrops and rock monoliths. Safety Officers will be covering Division EE, and Division North FF.							
9. Division/Group Communication Summary							
Function	Frequency	System	Channel	Function	Frequency	System	Channel
Command	Rx 168.1000 N Tx 170.4500 N Tone 123.0	NIFC C-2 RPT	2				
Tactical	173.9875 N	R5 TAC 6	5	Air to Ground	172.8125 N	AIR GND 1	6
Prepared By (Resource Unit Leader)		Approved By (Planning Sect. Ch.)		Date		Time	
Michael P. Murphy ICS 204		Gary Montgomery		08/23/2007		2321 NFES 1328	

DIVISION ASSIGNMENT LIST		1. Branch XXV		2. Division/Group North FF			
3. Incident Name Zaca Fire – Richardson Zone		4. Operational Period Day Shift Date: 08/24/2007 Time: 0600 - 1800					
5. Operations Personnel							
Operations Chief	Geoff Wilford Dave McCandliss		Division/Group Supervisor		Robert Doyle / Ron Riise (T)		
Branch Director	Greg Black		Air Attack Supervisor No.		Russ Gripp		
6. Resources Assigned This Period							
Strike Team/Task Force/ Resource Designator	Leader	Number Persons	Trans Needed	Drop Off PT/Time	Pick Up PT/Time		
CRW1 Klamath	Johnny Clem	21	N	DP-104 / 0700	Per DIVS		
CRW1 Laguna HS	Jim Huston	20	N	DP-104 / 0700	Per DIVS		
CRW1 VNC CC 1-2	Chad Cook	31	N	DP-104 / 0700	Per DIVS		
CRW1 Fulton	TBA	21	N	DP-104 / 0700	Per DIVS		
CRW2 Scorpions #2	Jose Caldera	20	N	DP-104 / 0700	Per DIVS		
CRW2 Mojave #2	Bill Crews	20	N	DP-104 / 0700	Per DIVS		
CRW2 Guam 63	Alicia Reiner	19	N	DP-104 / 0700	Per DIVS		
CRW2 Tallac C19	Steve Franke	18	N	DP-104 / 0700	Per DIVS		
ENG S/T 3600C	Aaron Schuh	26	N	DP-104 / 0700	Per DIVS		
ENG S/T 1657 C	Mark Courson	27	N	DP-104 / 0700	Per DIVS		
Task Force 6633C	D.Espinoza / T.Gray (T)	19	N	DP-104 / 0700	Per DIVS		
CAFS Task Force 1	Pete Jensen / K. Fildes (T)	23	N	DP-104 / 0700	Per DIVS		
DOZ2 Foley (E-10132)	Frank Foley	1	N	DP-104 / 0700	Per DIVS		
LOWB Foley (E-10133)	Frank Foley	1	N	DP-104 / 0700	Per DIVS		
WT2 Bennett (E-10017)	Marcos Castro	1	N	DP-104 / 0700	Per DIVS		
WT2 Holt (E-10084)	Greg Holt	1	N	DP-104 / 0700	Per DIVS		
WT2 24 hr Pearson (E-10268)	Ryan Pearson	1	N	DP-104 / 0700	Per DIVS		
WT2 24 hr Michelle's (E-10266)	Acie Avila	1	N	DP-104 / 0700	Per DIVS		
WT2 Charlie King (E-10298)	Charlie King	1	N	DP-104 / 0700	Per DIVS		
WT2 24 hr Rinaldo (E-10264)	Ryan Rinaldo	1	N	DP-104 / 0700	Per DIVS		
DOZB	John White	1	N	DP-104 / 0700	Per DIVS		
WT2 Bennett	Marcos Castro	1	N	DP-104 / 0700	Per DIVS		
FOBS	Damian Gulliani	1	N	DP-104 / 0700	Per DIVS		
FOBS	Reed Clark(T)	1	N	DP-104 / 0700	Per DIVS		
EMTB	Dave Frazee	1	N	DP-104 / 0700	Per DIVS		
EMTB	Patrick Young	1	N	DP-104 / 0700	Per DIVS		
SOF2	Jim Mackensen	1	N	DP-104 / 0700	Per DIVS		
SOF2	Brett Worthington (T)	1	N	DP-104 / 0700	Per DIVS		
7. Control Operations							
Complete firing operations from DP-104 to DP-106, coordinate with Firing Group.							
8. Special Instructions							
Return all 5 gallon burn mix fuel containers to Drop Points for backhaul, or return them to Supply at Richardson ICP.							
Backhaul all trash and refuse daily.							
Sites marked with blue plus red and white striped flagging together should be avoided.							
CAFS apparatus: avoid using foam on and adjacent to rock outcrops and rock monoliths.							
Safety Robert Weaver is covering Division CC/DD and EE							
9. Division/Group Communication Summary							
Function	Frequency	System	Channel	Function	Frequency	System	Channel
Command	Rx 166.6125 N Tx 168.4000 N Tone 123.0	NIFC C-4	1				
Tactical	173.9875 N	R5 TAC 6	5	Air to Ground	172.8125 N	AIR GND 1	6
Prepared By (Resource Unit Leader)		Approved By (Planning Sect. Ch.)		Date		Time	
Tony Lewis		Gary Montgomery		08/23/2007		2310	
ICS 204		NFES 1328					

DIVISION ASSIGNMENT LIST		1. Branch XXVII		2. Division/Group South FF			
3. Incident Name Zaca Fire – Richardson Zone		4. Operational Period Day Shift Date: 08/24/2007 Time: 0600 - 1800					
5. Operations Personnel							
Operations Chief	Geoff Wilford Dave McCandliss		Division/Group Supervisor	John Flores			
Branch Director	Thomas McGuire		Air Attack Supervisor No.	Russ Gripp			
6. Resources Assigned This Period							
Strike Team/Task Force/ Resource Designator	Leader	Number Persons	Trans Needed	Drop Off PT/Time	Pick Up PT/Time		
CRW1 Horseshoe Meadow	Joe Gonzales	20	N	DP-106 / 0700	Per DIVS		
CRW2 Monterey	Dan O'Keefe	20	N	DP-106 / 0700	Per DIVS		
CRW2 Scorpions #1	Liz Kurpies	20	N	DP-106 / 0700	Per DIVS		
CRW2 Arroyo Grande	Phil Hernandez / Mike Hickey	21	N	DP-106 / 0700	Per DIVS		
ENG S/T 1538C	Larry Ryan / Dave Zaniboni (T)	25	N	DP-106 / 0700	Per DIVS		
CAFS Task Force 2	Mark Acevedo	23	N	DP-106 / 0700	Per DIVS		
Zaca Task Force 103	Brad Rushing / Tim Ortegel (T)	2	N	DP-106 / 0700	Per DIVS		
ENG T/F Zaca 103 E316 T3	Barry Bonner	4	N	DP-106 / 0700	Per DIVS		
ENG T/F Zaca 103 E23 T3	Tanner Hartman	5	N	DP-106 / 0700	Per DIVS		
ENG T/F Zaca 103 E2061 T6	Shane Coyne	3	N	DP-106 / 0700	Per DIVS		
ENG T/F Zaca 103 E242 T6	Steve Woodrick	3	N	DP-106 / 0700	Per DIVS		
ENG T/F Zaca 103 E83 T6	Scott Saunders	3	N	DP-106 / 0700	Per DIVS		
ENG T/F Zaca 103 E2532 T6	Mark Evans	3	N	DP-106 / 0700	Per DIVS		
DOZ2 SHF 29 (E-10230)	David Brown	1	N	DP-106 / 0700	Per DIVS		
DOZ2 SNF 2 (E-10231)	Jeff Corwell	1	N	DP-106 / 0700	Per DIVS		
WT2 24 hrs Pierce (E-10261)	Mike Lawrance	1	N	DP-106 / 0700	Per DIVS		
WT2 24 hrs CNF 2 (E-10263)	Pete Troxell	1	N	DP-106 / 0700	Per DIVS		
EMTP	Wesely Daum	1	N	DP-106 / 0700	Per DIVS		
EMTB	Travis Thogmartini	1	N	DP-106 / 0700	Per DIVS		
SOF2	Sam Lobese	1	N	DP-106 / 0700	Per DIVS		
SOFR (T)	Joe Patore	1	n	DP-106 / 0700	Per DIVS		
7. Control Operations Complete firing operations up to the branch break. Monitor and patrol, mop up 150' into burn							
8. Special Instructions Return all 5 gallon burn mix fuel containers to Drop Points for backhaul, or return them to Supply at Richardson ICP. Backhaul all trash and refuse daily. Sites marked with blue plus red and white striped flagging together should be avoided. CAFS apparatus: avoid using foam on and adjacent to rock outcrops and rock monoliths. Safety Officers will be covering Division North FF and South FF.							
9. Division/Group Communication Summary							
Function	Frequency	System	Channel	Function	Frequency	System	Channel
Command	Rx 166.6125 N Tx 168.4000 N Tone 123.0	NIFC C-4	1				
Tactical	168.0500 N	TAC 1	8	Air to Ground	172.8125 N	AIR GND 1	6
Prepared By (Resource Unit Leader)		Approved By (Planning Sect. Ch.)		Date	Time		
Tony Lewis		Gary Montgomery		08/23/2007	2100		

DIVISION ASSIGNMENT LIST		1. Branch XXVII		2. Division/Group GG/HH			
3. Incident Name Zaca Fire – Richardson Zone		4. Operational Period Day Shift Date: 08/24/2007 Time: 0600 - 1800					
5. Operations Personnel							
Operations Chief	Geoff Wilford Dave McCandliss	Division/Group Supervisor		Stan Hart			
Branch Director	Tom McGuire	Air Attack Supervisor No.		Russ Gripp			
6. Resources Assigned This Period							
Strike Team/Task Force/ Resource Designator	Leader	Number Persons	Trans Needed	Drop Off PT/Time	Pick Up PT/Time		
CRW1 EI-Tejon	Cameron Reeder	14	N	DP-111 / 0700	Ozena Spike per DIVS		
CRW2 OC 23	Curt Lindstrand	21	N	DP-111 / 0700	Ozena Spike per DIVS		
ENG S/T 1605C	Larry Hill	21	N	DP-111 / 0700	Ozena Spike per DIVS		
DOZ2 Blatnick (E-10234)	John Blatnick	1	N	DP-111 / 0700	Ozena Spike per DIVS		
DOZ2 AG Construction (E-10177)	Fred Nehring	1	N	DP-111 / 0700	Ozena Spike per DIVS		
WT2 24 hr Dick Allen (E-10214)	Dick Allen	1	N	DP-111 / 0700	Ozena Spike per DIVS		
WT2 24 hr ANF 22 (E-10215)	Brandon Burrell	1	N	DP-111 / 0700	Ozena Spike per DIVS		
WT2 24 hr The Water Co.(E-10216)	Gerald Bean	1	N	DP-111 / 0700	Ozena Spike per DIVS		
WT2 24hr Charlie King (E-10086)	Charlie King	1	N	DP-111 / 0700	Ozena Spike per DIVS		
WT2 CNF 4 (E10262)	Norman Odorico	1	N	DP-111 / 0700	Ozena Spike per DIVS		
EMTP	Clayton Thomas	1	N	DP-111 / 0700	Ozena Spike per DIVS		
EMTP	Karena Wolleson	1	N	DP-111 / 0700	Ozena Spike per DIVS		
EMTB	Jerry Daoust	1	N	DP-111 / 0700	Ozena Spike per DIVS		
EMTB	Tony Vierra	1	N	DP-111 / 0700	Ozena Spike per DIVS		
DOZB	Albert Pena	1	N	DP-111 / 0700	Ozena Spike per DIVS		
DOZB	Tom Haus	1	N	DP-111 / 0700	Ozena Spike per DIVS		
DOZB (T)	Ben Dempsey	1	N	DP-111 / 0700	Ozena Spike per DIVS		
SOF2	Sam Lobese	1	N	DP- 111 / 0700	Ozena Spike per DIVS		
SOFR	Joe Pastore	1	N	DP-111 / 0700	Ozena Spike per DIVS		
7. Control Operations							
Mop up 150', improve lines, patrol and monitor. Maintain dip site at H202. Begin basic rehabilitation.							
8. Special Instructions							
Return all 5 gallon burn mix fuel containers to Drop Points for backhaul, or return them to Supply at Richardson ICP. Division needs for archeologists or Resource Advisors will be coordinated through Contingency Group. Backhaul all trash and refuse daily. Sites marked with blue plus red and white striped flagging together should be avoided. CAFS apparatus: avoid using foam on and adjacent to rock outcrops and rock monoliths. Some archeological sites are located on the Don Victor Jeep Road. At those identified sites, avoid dozer use, but brushing and masticator use OK.							
9. Division/Group Communication Summary							
Function	Frequency	System	Channel	Function	Frequency	System	Channel
Command South	Rx 173.0375 N Tx 167.3250 N Tone 123.0	NIFC C-12	7				
Tactical	168.0500 N	TAC 1	8	Air to Ground	172.8125 N	AIR GND 1	6
Prepared By (Resource Unit Leader) Al Yanagisawa (T)		Approved By (Planning Sect. Ch.) Gary Montgomery		Date 08/23/2007	Time 2130		

DIVISION ASSIGNMENT LIST				1. Branch Contingency		2. Division/Group Hwy 33 East	
3. Incident Name Zaca Fire – Richardson Zone				4. Operational Period Day Shift Date: 08/24/2007 Time: 0600 - 1800			
5. Operations Personnel							
Operations Chief		Geoff Wilford Dave McCandliss		Division/Group Supervisor		Mark German	
Branch Director		Valdo Calvert		Air Attack Supervisor No.		Russ Gripp	
6. Resources Assigned This Period							
Strike Team/Task Force/ Resource Designator		Leader		Number Persons	Trans Needed	Drop Off PT/Time	Pick Up PT/Time
ENG3 ST 4632 C		Shawn Craig		27	N	Ozena / 0700	Per DIVS
ENG3 Task Force 1521C		Andy Dimizio		26	N	Ozena / 0700	Per DIVS
ENG3 CNF E38		Reno Renteria		5	N	Ozena / 0700	Per DIVS
DOZ2 24hr Gratzl (E-10153)		Justin Rodriguez		1	N	Ozena / 0700	Per DIVS
LOWB Brown (E-10154)		Don Teter		1	N	Ozena / 0700	Per DIVS
DOZ2 24hr Johnson (E-10178)		Tony Burford		1	N	Ozena / 0700	Per DIVS
LOWB Pacific Star (E-10185)		Scott Thorton		1	N	Ozena / 0700	Per DIVS
DOZ2 S@K (E-10014)		Kirk McKenney		1	N	Ozena / 0700	Per DIVS
LOWB S@K (E-10067)		Charles Smith		1	N	Ozena / 0700	Per DIVS
WT2 Ventana Ranch		Den Cordrey		1	N	Ozena / 0700	Per DIVS
WT2 24hr. Schlitz		Frank Schlitz		1	N	Ozena / 0700	Per DIVS
DOZB		Nick Perricelli		1	N	Ozena / 0700	Per DIVS
DOZB		Tyler Gilliam		1	N	Ozena / 0700	Per DIVS
EMTB P		Richard Sheehan		1	N	Ozena / 0700	Per DIVS
EMTB		Steve Mann		1	N	Ozena / 0700	Per DIVS
THSP		Dennis King		1	N	Ozena / 0700	Per DIVS
7. Control Operations Support firing and fire attack operations as needed.							
8. Special Instructions Return all 5 gallon burn mix fuel containers to Drop Points for backhaul, or return them to Supply at Richardson ICP. Backhaul all trash and refuse daily. Sites marked with blue plus red and white striped flagging together should be avoided. CAFS apparatus: avoid using foam on and adjacent to rock outcrops and rock monoliths.							
9. Division/Group Communication Summary							
Function	Frequency	System	Channel	Function	Frequency	System	Channel
Command	Rx 166.6125 N Tx 168.4000 N Tone 123.0	NIFC C-4	1				
Tactical	173.9125 N	R5-TAC-4	3	Air to Ground	172.8125 N	AIR GND 1	6
Prepared By (Resource Unit Leader)		Approved By (Planning Sect. Ch.)		Date		Time	
Tony Lewis		Gary Montgomery		08/23/2007		2245	

DIVISION ASSIGNMENT LIST				1. Branch Contingency		2. Division/Group ROADS	
3. Incident Name Zaca Fire – Richardson Zone				4. Operational Period Date: 08/24/2007 Time: 0600-1800			
5. Operations Personnel							
Operations Chief		Geoff Wilford		Division/Group Supervisor		Greg Gates	
Branch Director		Valdo Calvert		Air Attack Supervisor No.		Russ Gripp	
6. Resources Assigned This Period							
Strike Team/Task Force/ Resource Designator		Leader	Number Persons	Trans Needed	Drop Off PT/Time	Pick Up PT/Time	
WT1 Jardines (E-10117)		Jardines	1	N	ICP / 0600	Per DIVS	
WT2 Water in Motion (E-10141)		Phil Henderson	1	N	ICP / 0600	Per DIVS	
WT2 AP Water Trucks (E-10265)		Mark Alves	1	N	ICP / 0600	Per DIVS	
WT2 Cool Mule (E-10218)		Norm Pope	1	N	ICP / 0600	Per DIVS	
WT3 Sweetwater (E-10301)		Gerhard Haas	1	N	ICP / 0600	Per DIVS	
GRD Bennett Grader		Sam Bennett	1	N	ICP / 0600	Per DIVS	
7. Control Operations							
Maintain roads as directed.							
8. Special Instructions							
Backhaul all trash and refuse daily.							
9. Division/Group Communication Summary							
Function	Frequency	System	Channel	Function	Frequency	System	Channel
Command East	Rx 166.6125 N Tx 168.4000 N Tone 123.0	NIFC C-4	1	Command South	Rx 173.0375 N Tx 167.3250 N Tone 123.0	NIFC C-12	7
Command West	Rx 168.1000 N Tx 170.4500 N Tone 123.0	NIFC C-2 RPT	2	Air to Ground	172.8125 N	AIR GND 1	6
Prepared By (Resource Unit Leader)		Approved By (Planning Sect. Ch.)		Date		Time	
Tony Lewis		Gary Montgomery		08/23/2007		2335	

INCIDENT RADIO COMMUNICATIONS PLAN GROUP 13 / 15			Incident Name ZACA RICHARDSON ZONE			Date/Time Prepared AUG 23, 2007 20:30 hrs			Operational Period Date/Time AUGUST 24, 2007 0600 to 1800 Day	
Ch #	Function	Channel Name/Trunked Radio System Talkgroup	Assignment	RX Freq N or W	RX Tone	TX Freq N or W	Tx Tone	Mode	Remarks	
1	COMMAND	NIFC C-4	Richardson Zone EAST	166.6125 N		168.4000 N	123.0	A	NORTHEAST SIDE CUYAMA PK	
2	COMMAND	NIFC C-2	Richardson Zone WEST	168.1000 N		170.4500 N	123.0	A	WEST SIDE MCPHERSON PK	
3	TACTICAL	R5-TAC-4	DIV AA / BB / Hwy 33 East/West	173.9125 N		173.9125 N		A		
4	TACTICAL	R5-TAC-5	DIV CC/DD	173.9625 N		173.9625 N		A		
5	TACTICAL	R5-TAC-6	DIV EE North FF	173.9875 N		173.9875 N		A		
6	AIR GROUND 1	AIR GND 1	Richardson Zone	172.8125 N		172.8125 N		A		
7	COMMAND	NIFC C-12	Richardson Zone SOUTH	173.0375 N		167.3250N	123.0	A	SOUTHEAST SIDE MONTE ARIDO PEAK	
8	TACTICAL	TAC 1	DIV HH/GG South FF	168.0500 N		168.0500 N		A		
9	TACTICAL	BURN TAC	FIRING OPS	172.2750 N		172.2750 N		A	FIRING OPS	
10	AIR GROUND BURN	BURN A/G	FIRING OPS	172.6125 N		172.6125 N		A	FIRING OPS	
11	COMMAND	NIFC C-9	Richardson Zone REYES	170.0125 N		165.2500 N	123.0	A	EAST SIDE REYES PEAK	
12										
13	EMS TAC	CALCORD	ALL DIVISIONS	156.0750 W		156.0750 W		A	As needed.	
14	EMERGENCY	AIR GUARD	ALL DIVISIONS	168.6250 N		168.6250 N	110.9	A	Urgent Aircraft Contact (14CH.HT)	
15	EMS TAC	CALCORD	ALL DIVISIONS	156.0750 W		156.0750 W		A	As needed.	
16	EMERGENCY	AIR GUARD	ALL DIVISIONS	168.6250 N		168.6250 N	110.9	A	Urgent Aircraft Contact (16CH.HT)	
5. Prepared by (Communications Unit) Kody Kerwin ,COML										

MEDICAL PLAN	1. INCIDENT NAME	2. DATE PREPARED	3. TIME PREPARED	4. OPERATIONAL PERIOD
	ZACA FIRE Richardson Zone	8/23/07	2000 hrs	8/24/07 Day 0600 hrs - 1800 hrs

5. INCIDENT MEDICAL AID STATIONS			
MEDICAL AID STATIONS	LOCATION	PARAMEDICS	
		YES	NO
Richardson ICP	New Cuyama- Frontline Medical	XX	
Ozena Spike Camp	Ozena Camp- FS fire station ; Hwy 33	XX	
Line EMT/EMTP's	Divisions where assigned	XX	XX

6. TRANSPORTATION				
NAME	ADDRESS	PHONE	PARAMEDICS	
			YES	NO
Lifeline Medic 504, ALS (Ground)	Ozena Camp- FS station ; Hwy 33	661-766-2192	XX	
SBC Medic 41; ALS(Ground)	SBC Sta#41- New Cuyama(in camp emergency)	911 805-692-5723	XX	
SBC -H308; ALS, Hoist, Night Vision (Air)	Rancho Helibase(Day), Gibraltar Dam.(Night)	805-967-6832 805-692-5723	XX	
Cal Star 7(PVT); ALS (Air)	Santa Maria Airport	805-546-1915	XX	
VNC - Air Squad 9; ALS, Hoist, Night Vision(Air)	Camarillo Airport	805-388-4294	XX	
KRN -H408; BLS, Hoist, Night Vision(Air)	Keene (KRN County)	661-324-6551	XX	

7. HOSPITALS								
NAME	ADDRESS	TRAVEL TIME		PHONE	HELIPAD		BURN CENTER	
		AIR	GRND		YES	NO	YES	NO
Marian Medical Center	1400 E Church , Santa Maria N 34 57.03/ W 120 24.42	35 min	1.5hrs	805-739-3200	XX			XX
Kern Medical Center(Trauma) (KRN)	1830 Flower St., Bakersfield N 35 23.23 / W 118 58.05	35 min	1.5 hrs	661-326-2667	XX			XX
Ventura County Medical Center (VNC)	3291 Loma Vista, Ventura N 34 16...574/ W 119 15.085	50 min	2 hrs	805-652-6165	XX			XX
Sherman Oaks Hospital	4929 Van Nuys Blvd, Sherman Oaks N 34 09.563 / W 118 26.866	1.5 hrs	3 hrs	818-907-4580	XX		XX	

8. MEDICAL EMERGENCY PROCEDURES	
<p>LINE EMERGENCY: Crew Supervisor to contact Division Supervisor with patient complaint/condition and location.</p> <ul style="list-style-type: none"> Division Supervisor contacts: <ol style="list-style-type: none"> Line EMT at nearest Drop Point Communications Unit Communications Unit contacts: <ol style="list-style-type: none"> Medical Unit Heli-base for Medical AIR EVAC Flight Operations Safety Division Supervisor will run medical emergency on command channel Communication Unit will clear command channel for emergency traffic Medical Unit will: <ol style="list-style-type: none"> Dispatch ground ambulance to nearest drop-point for ground transport only. Or after patient pickup, dispatch ambulance to Heli-base for Medical AIR EVAC Flight if needed Notify receiving hospital of injury status. <p>CAMP EMERGENCY: Contact Medical Unit with patient complaint/condition and location. Medical Staff will respond to stabilize incident:</p> <ul style="list-style-type: none"> Medical Unit contacts: <ol style="list-style-type: none"> Communications Safety Logistics Operations Crew Supervisor 	<p><u>INJURY REPORTING PROCEDURES</u></p> <p>NATURE OF INJURY _____</p> <p>LOCATION OF PATIENT _____</p> <p>TRANSPORTATION REQUESTED BY: AIR ___ GROUND ___</p> <p>POINT OF PICKUP _____</p> <p>LAT _____ LONG _____</p> <p>PATIENT UNIT ID _____</p> <p style="font-size: small;">REMINDER: DO NOT GIVE PT NAME OVER RADIO</p> <p>IS A EMT WITH PATIENT: YES _____ NO _____</p> <p>AGE _____</p> <p>SEX: MALE ___ FEMALE ___</p> <p>ALL EMERGENCIES---Secure the area and identify witnesses for later investigation. Keep an accurate log of events.</p>

ICS 206 8-78	9. PREPARED BY (MEDICAL UNIT LEADER) Michael Clemens / MEDL	10. REVIEWED BY (SAFETY OFFICER)
--------------	--	----------------------------------

S A F E T Y M E S S A G E

Zacca

August 24, 2007 Day Shift

LOOKOUTS, **C**OMMUNICATIONS, **E**SCAPE ROUTES, **S**AFETY ZONE

We Need all this to perform our job safely, its up to everyone!!

Weather Environment

- Watch for any erratic and sudden reversal of wind direction.

Fireline:

- **Health and Sanitation** - Keep spike camps, staging areas and coyote bivouacs (Div AA, BB) as clean as possible to reduce encounters with unwanted critters & camp crud.
- **Hydration** is becoming critical with higher temps and crew fatigue. Be alert to heat stress in yourself and others. Any flu like symptoms leave, them in camp.
- **Crew briefings** must include LCES prior to engagement.
- **Mop Up**—wear eye protection

Stress Reactions:

- Focusing on small tasks but ignoring the big picture.
Accepting increased risk as completion of the task gets near.

Transportation issues:

- Watch for the public on HWY 33, residences are in and around their homes
- Lights, and seatbelts on at all times.
- Dusty roads and steep drop offs, take it easy, Santa Barbara RD and Sierra Madre very dusty. Any water makes the roads extremely slippery.
- Watch out for the other person

Prepared by: Jennifer Boyd Safety Officer **Date:** 8/23/07
Linda Szczepanik Deputy Safety Officer

INCIDENT RISK ANALYSIS (ICS 215a)

DIV	HAZARDOUS ACTIONS / CONDITIONS	MITIGATIONS / WARNINGS / REMEDIES
AA,BB CC,DD, EE, NorthFF , SouthFF GG, HH,	TERRAIN	<ul style="list-style-type: none"> Scout all areas for extremely steep terrain. Watch for loose ground around cliff edges. FOCUS FOCUS FOCUS
CC,DD, EE, North FF South FF GG, HH	DRIVING HAZARDS	<ul style="list-style-type: none"> Drive defensively! Expect the unexpected around every curve. Drive with headlights on; Use Reds in dense smoke, before backing use backers whenever available. Increase following distances on dusty roads Narrow, winding one lane roads, use traffic control when needed. Continue road guards during burn outs. Utilize watertenders to mitigate dust issues on roads. Private vehicles tend to drive at high rates of speed on the hiways in this area. HEADS UP
AA,BB, CC, DD,EE, North FF South FF GG, HH	FIRE BEHAVIOR	<ul style="list-style-type: none"> Monitor current weather conditions and forecasts. Make sure all personnel receive thorough briefings every shift. Maintain adequate escape routes and safety zones. Advise all personnel if these are compromised or changed. Set trigger points when appropriate. Adhere to 10 Std Orders, mitigate 18 situations. Maintain Situational Awareness. Live fuel moistures are rating from 30% to 40%, green will burn. MONITOR
ALL	FATIGUE	<ul style="list-style-type: none"> Maintain 2:1 work/rest ratio, If more hours off are needed, advise Branch and schedule for a staggered start time
ALL	HYDRATION	<ul style="list-style-type: none"> Drinking water before, during and after shifts, up to 1.5 gal. per shift. Weather is calling for very hot and extremely dry. DRINK DRINK DRINK
AA, BB, CC, DD, EE, North FF South FF	LINE CONSTRUCTION	<ul style="list-style-type: none"> Conduct thorough briefing for all personnel (inside rear cover IRPG). Steep ground. Ensure LCES in place prior to engagement (IRPG p. 6). Adhere to 10 Std. Orders, mitigate 18 Situations. Establish adequate safety zones (IRPG p.7) and escape routes Anchor points have to be established prior to engagement in this topography!!!
North FF South FF	BURN OUTS	<ul style="list-style-type: none"> Post lookouts for rolling material, and spots Situational Awareness at all times Constant communication with adjoining resources Don't out pace your holding capabilities.
ALL	FOOT TRAVEL	<ul style="list-style-type: none"> In steep and rocky terrain, watch footing and maintain proper spacing. Watch for over-head hazards. Treat "hot spots" on your feet before they become blisters. Maintain downhill tool placement
CC, DD, EE, North FF South FF GG, HH	MOP UP	<ul style="list-style-type: none"> Conduct thorough briefing for all personnel (inside rear cover IRPG). Use all required PPE, MANDATORY eye protection. Maintain proper spacing and overhead clearance. Be alert for stump holes and root cavities. Minimize exposure to smoke, and rotate personnel into clean air when practical. Evaluate unburned islands/Increase situational awareness.
North FF South FF	STRUCTURE PROTECTION & HAZMAT ISSUES	<ul style="list-style-type: none"> Conduct thorough briefing for all personnel (inside rear cover IRPG). Utilize Structure Assessment Checklist (IRPG p.14). Follow Structure Protection Guidelines (IRPG p. 16). Utilize hazmat IC Checklist (IRPG p. 26). Call Comm fro Hazmat Support
ALL	MEDICAL EMERGENCIES	<ul style="list-style-type: none"> Assign personnel with Advanced Life Support capability on the line. Due to extreme driving distances Medical helicopters will be used for immediate evacuation. Supervisors insure that personnel with severe reaction to bee sting,
ALL	SAFETY ZONES	<ul style="list-style-type: none"> Follow safety zone guidelines (IRPG p. 7) Carefully evaluate burned areas before designation as safety zones due to EXTREME FIRE BEHAVIOR. When safety zones are distant from work site, set trigger points to allowing personnel to reach them in a timely manner.
South FF	NATURAL GAS LINE (HIWAY 33 CORRIDOR)	<ul style="list-style-type: none"> Ensure all resources know the location of the gas line. Dozers need to utilize extreme caution working in areas with the gas line. Flag and avoid.
Incident Name Zaca Incident ICS 215a	DATE PREPARED: August 23, 2007	OPERATIONAL PERIOD 8/24/07 Day Shift Prepared by L. Szczepanik
	TIME PREPARED: 1400 HOURS	



Human Resource Message

Zaca II 082407

Hi! I am your Human Resource Specialist, Diane Simpson. I am available to help you with all of your human resource needs. Feel free to stop by and visit me at my trailer next to Check-In/Demob. I will only be in camp in the afternoons and evenings, but can be reached by cell phone most times at 618-534-2111.

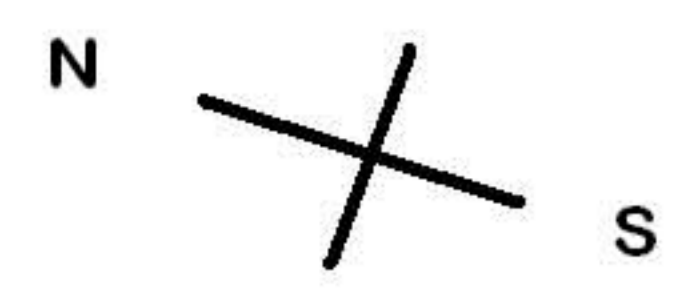
Human Resources are the most important component to successfully accomplishing our mission here.

Keep up the great work!

Incident Human Resource Specialist is: Diane Simpson

Location: Trailer next to Check-In/Demob

DIVISION ASSIGNMENT LIST				1. Branch Contingency		2. Division/Group Hwy 33	
3. Incident Name Zaca Fire – Richardson Zone				4. Operational Period Day Shift Date: 08/24/2007 Time: 0600 - 1800			
5. Operations Personnel							
Operations Chief		Geoff Wilford		Division/Group Supervisor		Mark German	
Branch Director		Valdo Calvert		Air Attack Supervisor No.		Russ Gripp	
6. Resources Assigned This Period							
Strike Team/Task Force/ Resource Designator		Leader	Number Persons	Trans Needed	Drop Off PT/Time	Pick Up PT/Time	
ENG3 ST 4632 C		Shawn Craig	27	N	Ozena / 0700	Per DIVS	
ENG3 Task Force 1521C		Andy Dimizio	26	N	Ozena / 0700	Per DIVS	
ENG3 LPF E72		Brian Bridgen	5	N	Ozena / 0700	Per DIVS	
ENG3 CNF E38		Reno Renteria	5	N	Ozena / 0700	Per DIVS	
DOZ2 24hr Gratzl (E-10153)		Justin Rodriguez	1	N	Ozena / 0700	Per DIVS	
LOWB Brown (E-10154)		Don Teter	1	N	Ozena / 0700	Per DIVS	
DOZ2 24hr Johnson (E-10178)		Tony Burford	1	N	Ozena / 0700	Per DIVS	
LOWB Pacific Star (E-10185)		Scott Thorton	1	N	Ozena / 0700	Per DIVS	
DOZ2 S@K (E-10014)		Kirk McKenney	1	N	Ozena / 0700	Per DIVS	
LOWB S@K (E-10067)		Charles Smith	1	N	Ozena / 0700	Per DIVS	
WT2 Ventana Ranch		Den Cordrey	1	N	Ozena / 0700	Per DIVS	
WT2 24hr. Schlitz		Frank Schlitz	1	N	Ozena / 0700	Per DIVS	
DOZB		Nick Perricelli	1	N	Ozena / 0700	Per DIVS	
DOZB		Tyler Gilliam	1	N	Ozena / 0700	Per DIVS	
EMTB		Steve Mann	1	N	Ozena / 0700	Per DIVS	
7. Control Operations Support firing and fire attack operations as needed.							
8. Special Instructions Return all 5 gallon burn mix fuel containers to Drop Points for backhaul, or return them to Supply at Richardson ICP. Backhaul all trash and refuse daily. Sites marked with blue plus red and white striped flagging together should be avoided. CAFS apparatus: avoid using foam on and adjacent to rock outcrops and rock monoliths.							
9. Division/Group Communication Summary							
Function	Frequency	System	Channel	Function	Frequency	System	Channel
Command	Rx 166.6125 N Tx 168.4000 N Tone 123.0	NIFC C-4	1				
Tactical	173.9625 N	R5-TAC-5	4	Air to Ground	172.8125 N	AIR GND 1	6
Prepared By (Resource Unit Leader) Tony Lewis			Approved By (Planning Sect. Ch.) Gary Montgomery		Date 08/23/2007		Time 2250

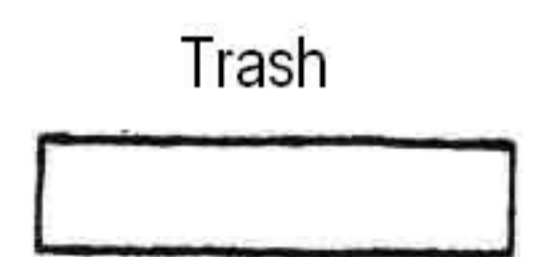
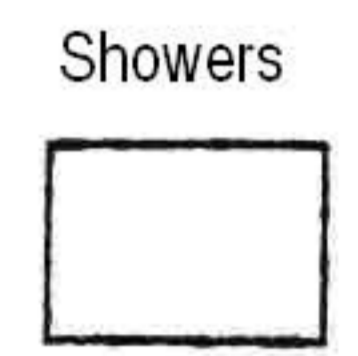
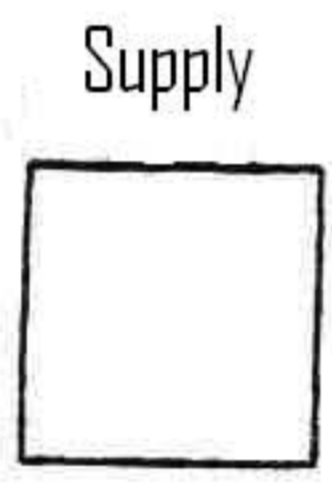
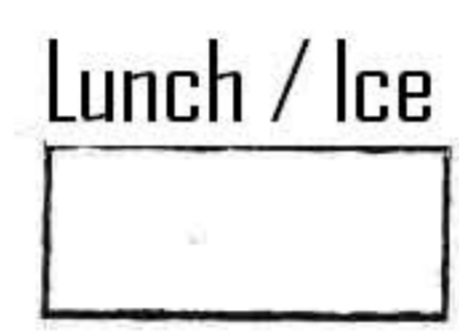


OZENA SPIKE CAMP

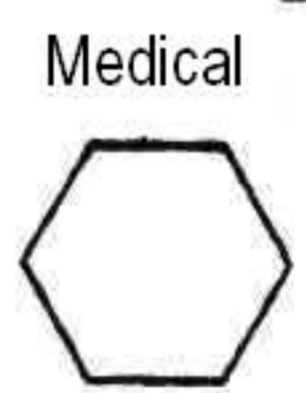
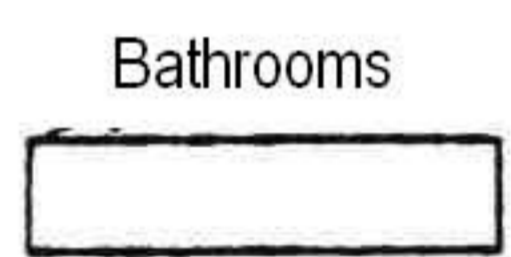
8-18-07



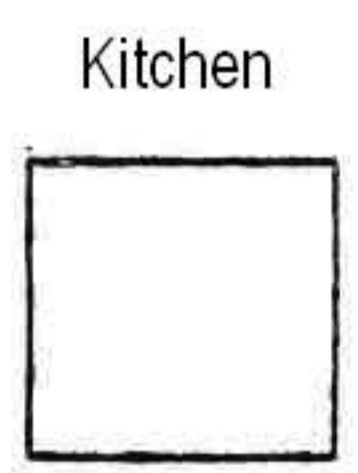
Sleeping Area



Parking



Dining Area



Facilities Map
Not to Scale
8-18-07

EXIT

ENTRANCE



Do Not Enter
↓

← 166

Hwy 33

Ventura →

ZACA II



TO SANTA MARIA

ROCKFRONT
OHV

HWY 166

To Bakersfield

COTTONWOOD CYN

Bates Cyn
Rd

Perkins Rd.

BEL

Kirschenman
Road

Cuyama River

Foothill Road

QUATAL

W BURGESS CYN

APACHE CYN

SIERRA MADRE RD

PINE SPIKE
CAMP

DP 101

DP-102

DP-130

DP 103

DRY CYN

DP-104

DP 106

Cuyama River

Hurricane
Spike Camp

DP 100

FRWS-2

Buckhorn Rd

Buckhorn Rd

HWY
33

OZENA

DP 110

Zaca Fire

Ozena Spike
Camp

Don Victor
Jeep Trail

H-202

DP 112

Potrero Seco

PINE MTN
INN

DP 111

TO OJAI

TRANSPORTATION
MAP

NOT TO SCALE

July 20, 2007

DROP POINT



RICHARDSON
ICP



HELIBASE
CAMP



Water Source



DP-113

THREE
SISTERS

HILDRETH PEAK

OLD MAN MTN

California Interagency Incident Management Team 1

ZACA FIRE

CAMP PHONE NUMBERS

IC	661-766-2026	DEMOB	800-941-6783
OPERATIONS	661-766-2781	DEMOB FAX	661-766-2718
SAFETY	661-766-2789	FINANCE	661-766-2027
LOGISTICS	661-766-2760	PERSONNEL TIME	661-766-2182
ORDERING	661-766-2648	FINANCE FAX	661-766-2186
SUPPLY	661-766-2617	COST	661-766-2594
SUPPLY FAX	661-766-2627	PROCUREMENT / EQTR	661-766-2181
PLANS	661-766-2726	TRAINING	661-766-2743
PIO	661-766-2906 / 661-766-2908	MEDICAL	661-766-2904
HR	661-766-2979	OES	661-766-2814
LAW ENFORCEMENT	661-766-2863	COMMUNICATIONS	661-766-2172
COMP/CLAIMS	661-766-2730	COMMUNICATIONS / RADIOS	661-766-2192
MOTEL	661-766-2613	MICHELLES COPY	661-766-2030
R&D	1-800-941-6799	GROUND SUPPORT	1-866-567-6177
SB COUNTY SO	805-689-6128	GISS	916-591-9032

Individual Phone Numbers

Mnemonic	Name	Home Unit	Cell Phone
ICT1	Rich Hawkins	CA-CNF	619-548-3734
DPIC	Jerry McGowan	CA-STF	209-768-9682
PIO1	Chuck Dickson	CA-KRN	661-330-0152
SOF1	Jennifer Boyd	CA-ENF	530-306-1636
SOF2	Linda Szczepanik	CA-GRV	530-919-4650
FSC1	Laurie Beck	CA-GRV	530-333-5681
LSC1	Dan Turner	CA-GRV	949-812-8753
FACL	Tim Gardner	CA-ALH	916-591-9019
ORDM	Jeff Carter	CA-VNC	310-749-2406
ORDM	Teresa Boese	CA-KNF	530-398-4257
GSUL	Dave Trussell	CA-GRV	949-812-8539
SPUL	Dennis Boslaugh	CA-LPF	805-895-4909
MEDL	Matt Lipson	CA-SLO	949-812-8698
TNSP	Bill Reynolds	CA-VNC	805-218-4406
FDUL	Ricky Washington	CA-LAC	949-812-8695
COML	Kody Kerwin	CA-CON	949-812-8755
PSC1	Gary Montgomery	CA-LPF	805-878-4338
FBAN	Kelly Martin	CA-YNP	209-742-3391
RESL	Melody Fountain	CA-LPF	805-720-5685
RESL	John Roberts	CA-COR	956-712-2432
CTSP/Web	Jim Ott	CA-GRV	530-680-5635
OSC1	Geoff Wilford	CA-KRN	661-330-0198
OSC1	Rich Olson	CA-KRN	661-304-2198
OSC1(M)	Ranger Dorn	CA-VNC	805-377-5425
OSC1(M)	Ron Bollier	CA-SQF	661-301-8156
AOBD	Kent Haskins	CA-KRN	661-330-0133
ATGS	Russ Gripp	CA-KNF	530-598-4172
ASGS	Jason Nava	CA-KRN	661-805-4750
OPBD	Greg Black	CA-KRN	661-342-7143
OPBD	Mark von Tillow	CA-LPF	805-895-6871
DIVS	Val Lynch	CA-KRN	661-487-2686
DIVS	John Flores	CA-ANF	626-388-7623
DIVS	Larry Turman	CA-LNF	530-945-8196

