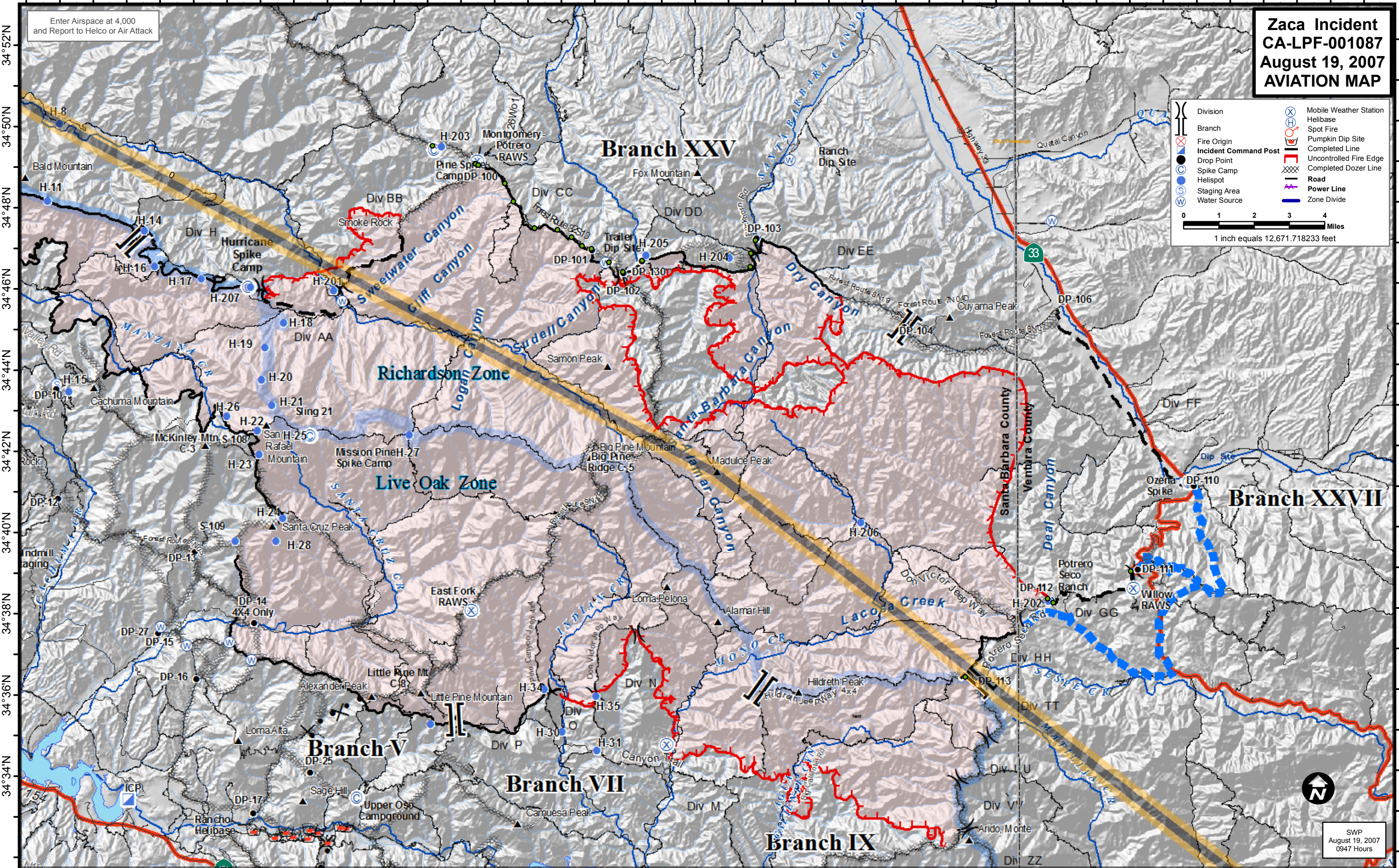


119°56'W 119°54'W 119°52'W 119°50'W 119°48'W 119°46'W 119°44'W 119°42'W 119°40'W 119°38'W 119°36'W 119°34'W 119°32'W 119°30'W 119°28'W 119°26'W 119°24'W 119°22'W 119°20'W 119°18'W 119°16'W



Zaca Incident
CA-LPF-001087
August 19, 2007
AVIATION MAP

Division	Mobile Weather Station
Branch	Helibase
Fire Origin	Spot Fire
Incident Command Post	Pumpkin Dip Site
Drop Point	Completed Line
Spike Camp	Uncontrolled Fire Edge
Helispot	Completed Dozer Line
Staging Area	Road
Water Source	Power Line
	Zone Divide

0 1 2 3 4 Miles
1 inch equals 12,671.718233 feet

119°56'W 119°54'W 119°52'W 119°50'W 119°48'W 119°46'W 119°44'W 119°42'W 119°40'W 119°38'W 119°36'W 119°34'W 119°32'W 119°30'W 119°28'W 119°26'W 119°24'W 119°22'W 119°20'W 119°18'W 119°16'W

SWP
August 19, 2007
0947 Hours