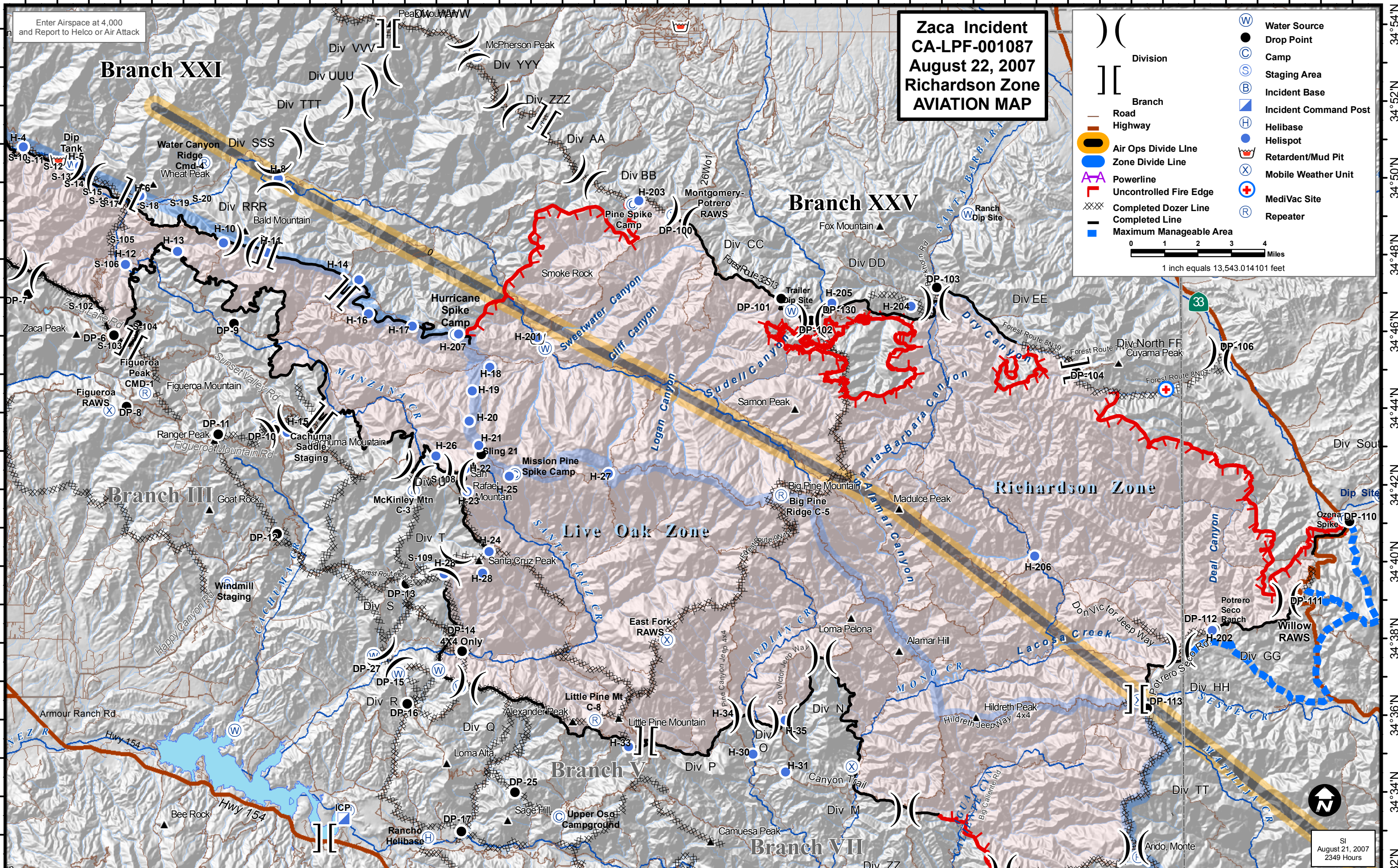


120°3'W 120°1'W 119°59'W 119°57'W 119°55'W 119°53'W 119°51'W 119°49'W 119°47'W 119°45'W 119°43'W 119°41'W 119°39'W 119°37'W 119°35'W 119°33'W 119°31'W 119°29'W 119°27'W 119°25'W 119°23'W 119°21'W



120°3'W 120°1'W 119°59'W 119°57'W 119°55'W 119°53'W 119°51'W 119°49'W 119°47'W 119°45'W 119°43'W 119°41'W 119°39'W 119°37'W 119°35'W 119°33'W 119°31'W 119°29'W 119°27'W 119°25'W 119°23'W 119°21'W

Enter Airspace at 4,000
and Report to Helco or Air Attack

Zaca Incident CA-LPF-001087 August 22, 2007 Richardson Zone AVIATION MAP

	Division		Water Source
	Branch		Drop Point
	Road		Camp
	Highway		Staging Area
	Air Ops Divide Line		Incident Base
	Zone Divide Line		Incident Command Post
	Powerline		Helibase
	Uncontrolled Fire Edge		Helispot
	Completed Dozer Line		Retardant/Mud Pit
	Completed Line		Mobile Weather Unit
	Maximum Manageable Area		MediVac Site
			Repeater

0 1 2 3 4 Miles
1 inch equals 13,543.014101 feet

SI
August 21, 2007
2349 Hours