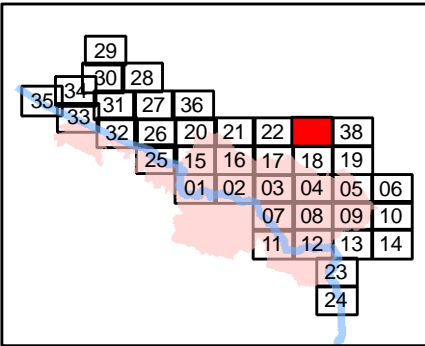


ZACA INCIDENT

**Richardson Zone
CA-LPF-001087
August 30, 2007
NAD27 Datum**




**Perimeter from
August 27 1900 hrs**

PAGE 37



Tile Locator Map

Legend

- | | |
|---|------------------------|
|  | Division |
|  | Branch |
|  | Fire Origin |
|  | Drop Point |
|  | Helispot |
|  | MediVac Site |
|  | Repeater |
|  | Spike Camp |
|  | Water Source |
|  | Mobile Weather Station |
|  | Retardant/Dip Site |
|  | Contingency Line |
|  | Hand Line |
|  | Completed Line |
|  | Uncontrolled Fire Edge |
|  | Completed Dozer Line |
|  | Zone Dividing Line |
|  | Wilderness Area Bndry |
|  | Gas Pipeline |

1:24,000

MRH
August 29, 200
2140 Hours

