

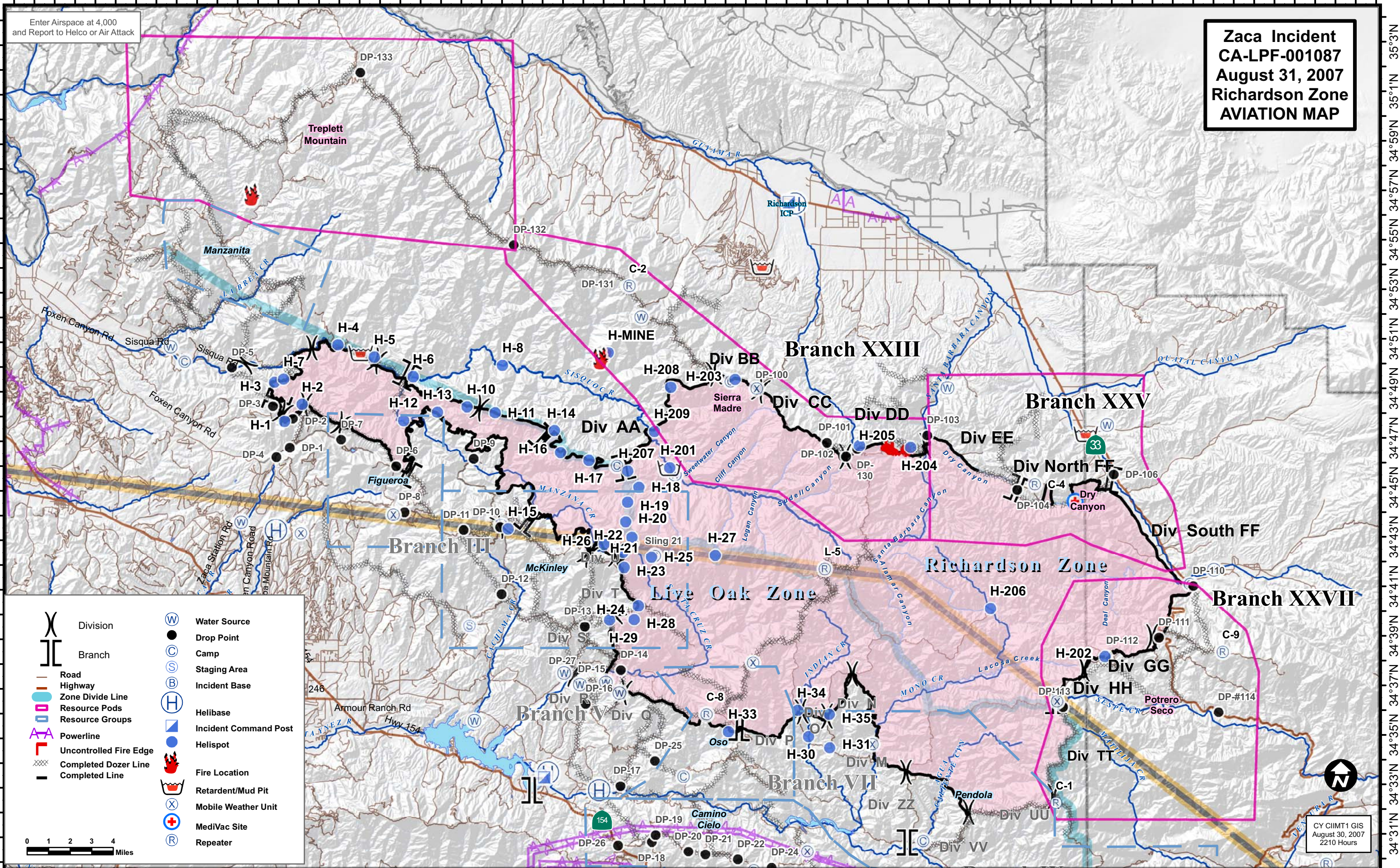
120°18'W 120°15'W 120°12'W 120°9'W 120°6'W 120°3'W 120°0'W 119°57'W 119°54'W 119°51'W 119°48'W 119°45'W 119°42'W 119°39'W 119°36'W 119°33'W 119°30'W 119°27'W 119°24'W 119°21'W 119°18'W 119°15'W 119°12'W

35°4'N 35°2'N 35°0'N 34°58'N 34°56'N 34°54'N 34°52'N 34°50'N 34°48'N 34°46'N 34°44'N 34°42'N 34°40'N 34°38'N 34°36'N 34°34'N 34°32'N 34°30'N 34°28'N 34°26'N 34°24'N 34°22'N 34°20'N 34°18'N 34°16'N 34°14'N 34°12'N

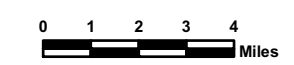
35°3'N 35°1'N 34°59'N 34°57'N 34°55'N 34°53'N 34°51'N 34°49'N 34°47'N 34°45'N 34°43'N 34°41'N 34°39'N 34°37'N 34°35'N 34°33'N 34°31'N 34°29'N 34°27'N 34°25'N 34°23'N 34°21'N 34°19'N 34°17'N 34°15'N 34°13'N

**Zaca Incident**  
**CA-LPF-001087**  
**August 31, 2007**  
**Richardson Zone**  
**AVIATION MAP**

Enter Airspace at 4,000  
and Report to Helco or Air Attack



	Division		Water Source
	Branch		Drop Point
	Road		Camp
	Highway		Staging Area
	Zone Divide Line		Incident Base
	Resource Pods		Helibase
	Resource Groups		Incident Command Post
	Powerline		Helispot
	Uncontrolled Fire Edge		Fire Location
	Completed Dozer Line		Retardant/Mud Pit
	Completed Line		Mobile Weather Unit
			MediVac Site
			Repeater



CY CIIMT1 GIS  
August 30, 2007  
2210 Hours