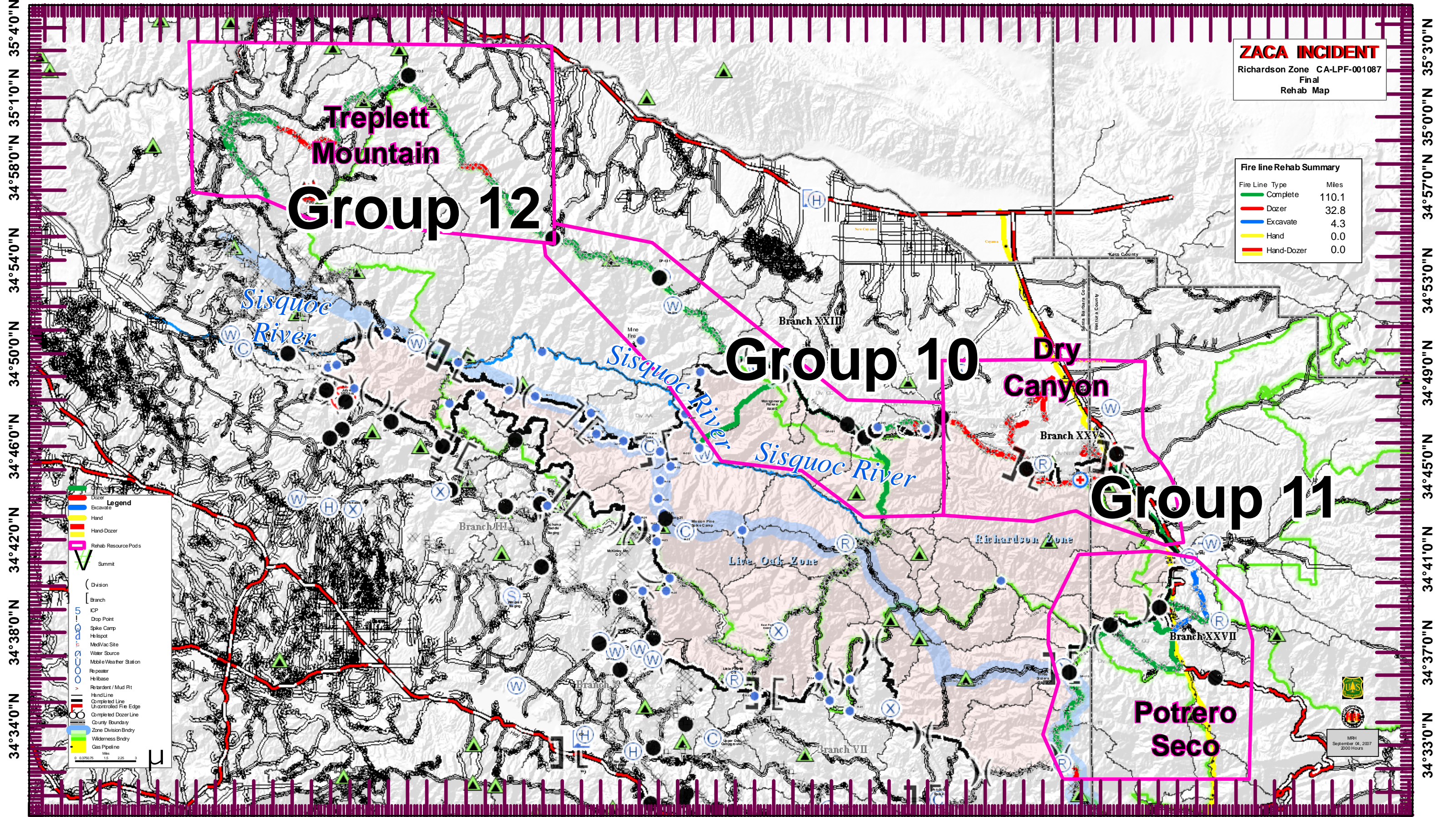


120°18'0"W 120°13'0"W 120°8'0"W 120°4'0"W 120°0'0"W 119°55'0"W 119°50'0"W 119°45'0"W 119°40'0"W 119°35'0"W 119°30'0"W 119°25'0"W 119°20'0"W 119°15'0"W 119°10'0"W



ZACA INCIDENT
Richardson Zone CA-LPF-001087
Final
Rehab Map

Fire line Rehab Summary	
Fire Line Type	Miles
Complete	110.1
Dozer	32.8
Excavate	4.3
Hand	0.0
Hand-Dozer	0.0

Legend

- Dozer
- Excavate
- Hand
- Hand-Dozer
- Rehab Resource Pods
- Summit
- Division
- Branch
- ICP
- Drop Point
- Spike Camp
- Helispot
- Med/Vac Site
- Water Source
- Mobile Weather Station
- Repeater
- Hillbase
- Retardant / Mud Pit
- Hand Line
- Completed Line
- Uncontrolled Fire Edge
- Completed Dozer Line
- County Boundary
- Zone Division Boundary
- Wilderness Boundary
- Gas Pipeline

Scale: 0 0.375 0.75 1.5 2.25 3 Miles

MSR
September 04, 2007
2000 Hours

34°40'0"N
34°58'0"N
34°54'0"N
34°50'0"N
34°46'0"N
34°42'0"N
34°38'0"N
34°34'0"N

35°40'0"N
35°30'0"N
35°20'0"N
35°10'0"N
34°50'0"N
34°40'0"N
34°30'0"N
34°20'0"N
34°10'0"N
34°00'0"N

120°18'0"W 120°13'0"W 120°8'0"W 120°4'0"W 120°0'0"W 119°55'0"W 119°50'0"W 119°45'0"W 119°40'0"W 119°35'0"W 119°30'0"W 119°25'0"W 119°20'0"W 119°15'0"W 119°10'0"W