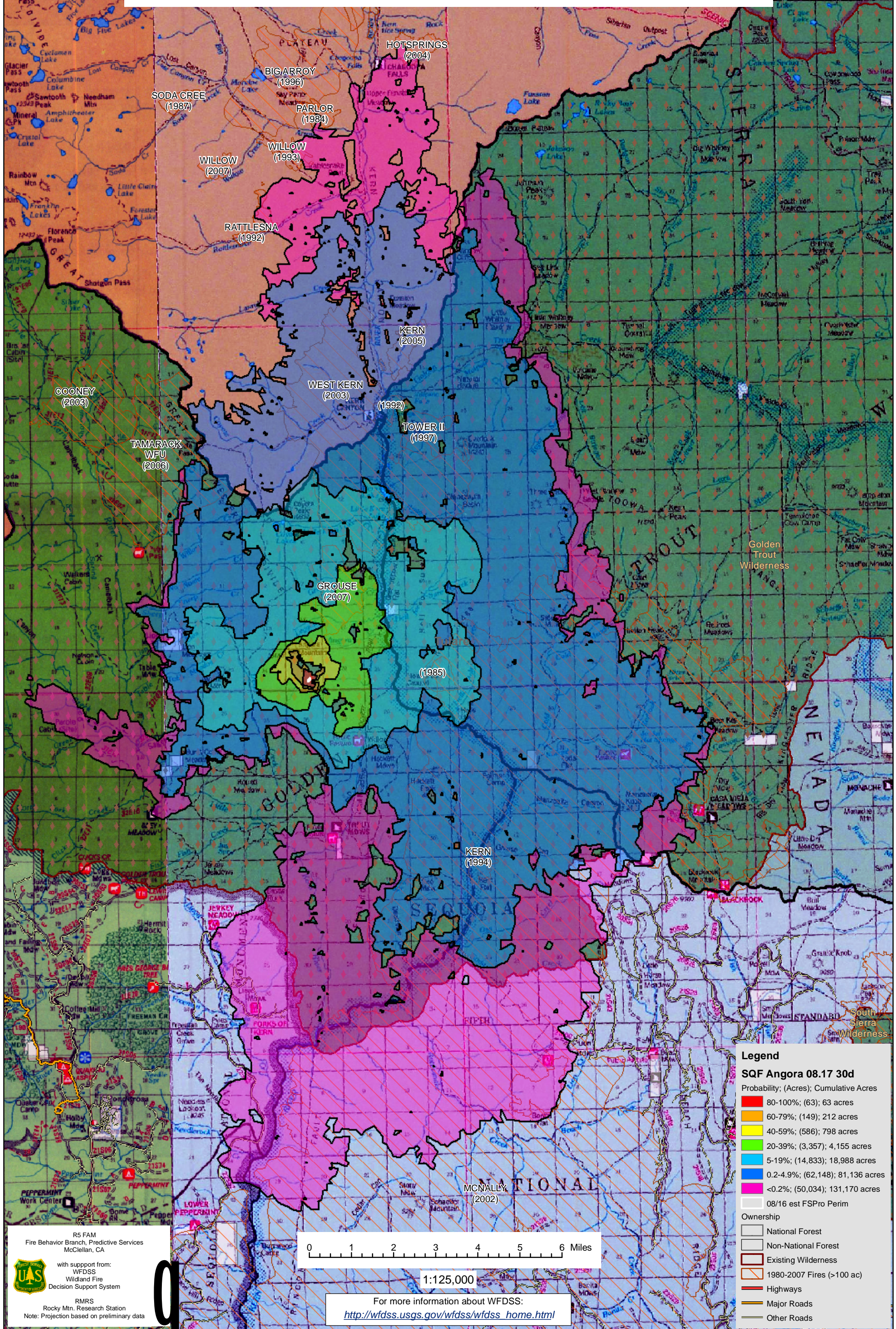


WFDSS - FSPRO PROBABILITY: SQF ANGORA FIRE (2008)
08/17 - 30 DAYS - 60m Res; 1000 Fire Sim: ERC: Rattlesnake WINDS: Rattlesnake;
File: 30day1000fires 202fm to 181; Analyst: Phil Bowden

John Muir
Wilderness
FOUL



Legend

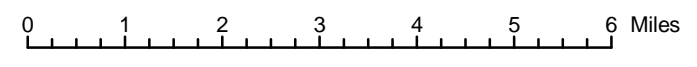
SQF Angora 08.17.30d
Probability; (Acres); Cumulative Acres

- 80-100%; (63); 63 acres
- 60-79%; (149); 212 acres
- 40-59%; (586); 798 acres
- 20-39%; (3,357); 4,155 acres
- 5-19%; (14,833); 18,988 acres
- 0.2-4.9%; (62,148); 81,136 acres
- <0.2%; (50,034); 131,170 acres

08/16 est FSPRO Perim

Ownership

- National Forest
- Non-National Forest
- Existing Wilderness
- 1980-2007 Fires (>100 ac)
- Highways
- Major Roads
- Other Roads



1:125,000

For more information about WFDSS:
http://wfdss.usgs.gov/wfdss/wfdss_home.html

R5 FAM
Fire Behavior Branch, Predictive Services
McClellan, CA

with support from:
WFDSS
Wildland Fire
Decision Support System

RMRS
Rocky Mtn. Research Station
Note: Projection based on preliminary data