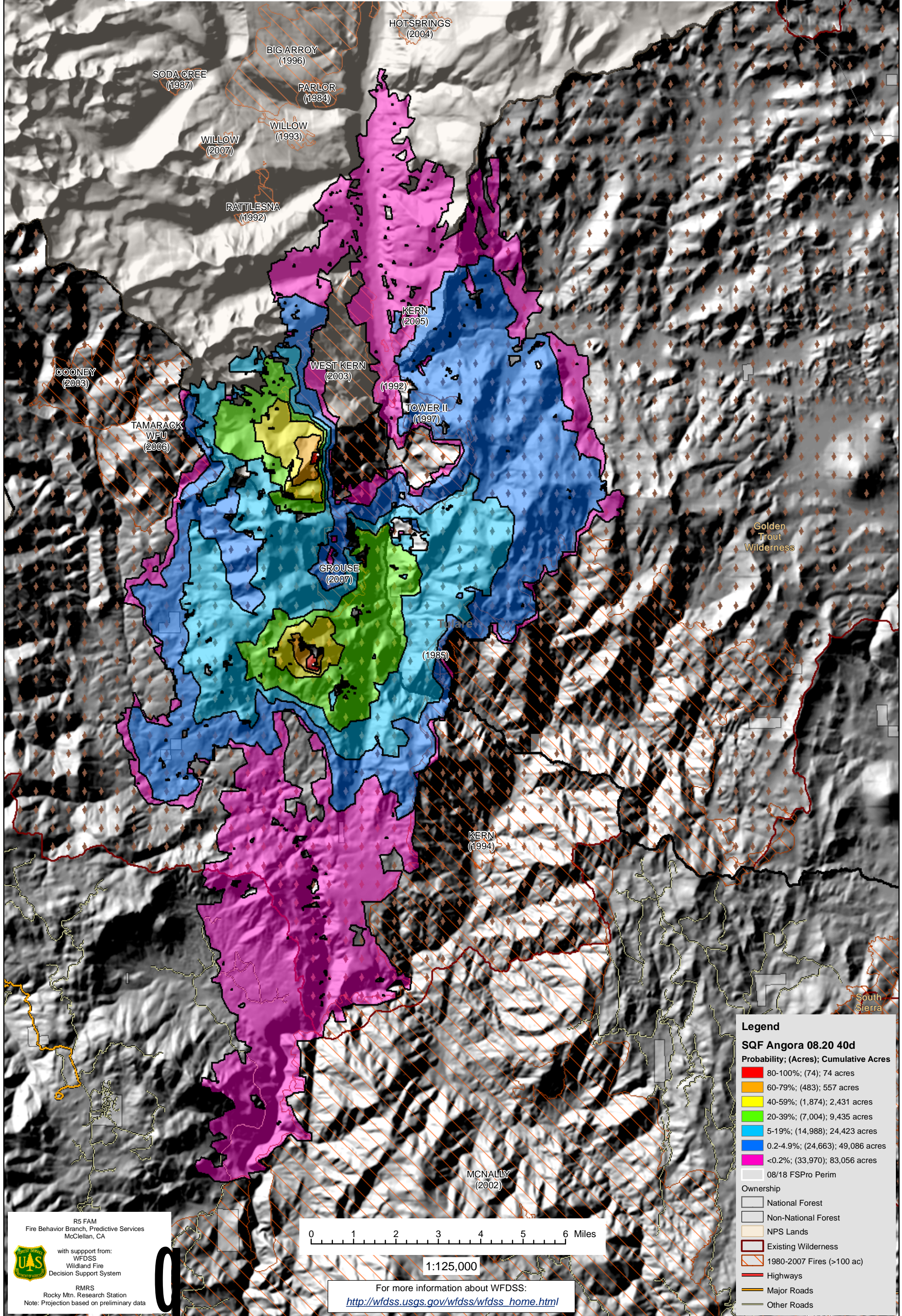


WFDSS - FSPRO PROBABILITY: SQF ANGORA FIRE (2008)
08/20 - 40 DAYS - 60m Res; 2000 Fire Sim: ERC: Blackrock WINDS: Rattlesnake;
File: 40day2000fires_with yr2000plus_fires_as_FM181; Analyst: Phil Bowden
[NOTE: Uses 2000 and later fires as a mask]

John Muir Wilderness



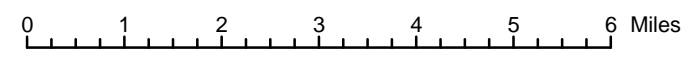
Legend

SQF Angora 08.20 40d
Probability; (Acres); Cumulative Acres

- 80-100%; (74); 74 acres
- 60-79%; (483); 557 acres
- 40-59%; (1,874); 2,431 acres
- 20-39%; (7,004); 9,435 acres
- 5-19%; (14,988); 24,423 acres
- 0.2-4.9%; (24,663); 49,086 acres
- <0.2%; (33,970); 83,056 acres
- 08/18 FSPRO Perim

Ownership

- National Forest
- Non-National Forest
- NPS Lands
- Existing Wilderness
- 1980-2007 Fires (>100 ac)
- Highways
- Major Roads
- Other Roads



1:125,000

R5 FAM
 Fire Behavior Branch, Predictive Services
 McClellan, CA

with support from:
 WFDSS
 Wildland Fire
 Decision Support System

RMRS
 Rocky Mtn. Research Station
 Note: Projection based on preliminary data

For more information about WFDSS:
http://wfdss.usgs.gov/wfdss/wfdss_home.html