



**TIER II REGION 5**

**Apache, CA 30 April 2008 Run A**

30 April 2008 T2\_A\_080430\_jk

Summary of Values-at-Risk per FSPro Fire Spread Probabilities: 7 days as of 30 April 2008

**Spotted Owl Habitat**

MODIS Points: 30 April 2008 AM

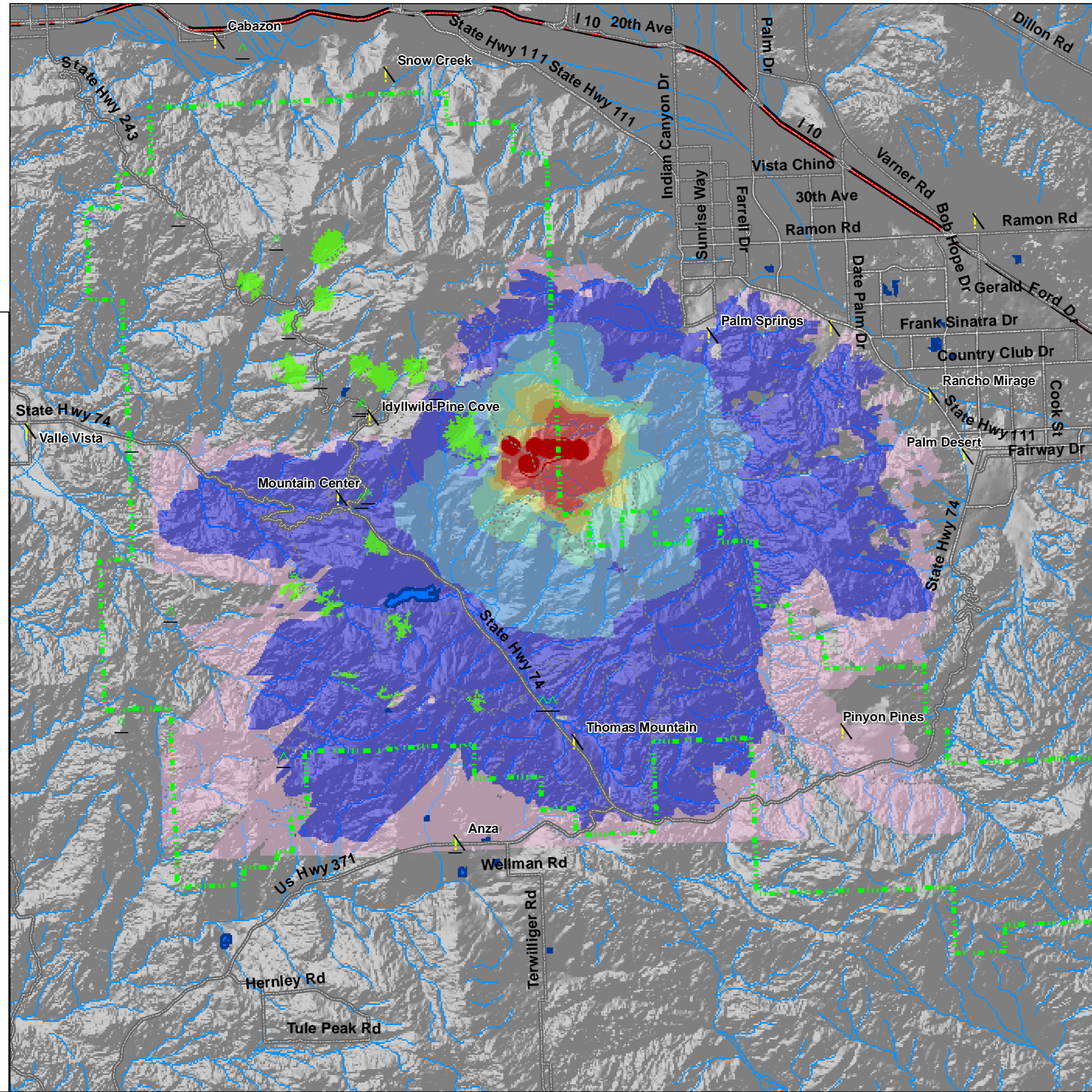
! 30 April 2008

Fire Perimeter: 30 April 2008 AM

**FSPro Fire Spread Probability**

- > 80 %
- 60 - 80 %
- 40 - 60 %
- 20 - 40 %
- 5 - 20 %
- 1 - 5 %
- < 1 %

- Communities at Risk
- Forest Service Facilities
- Interstates
- Major Roads
- Trails (USFS)
- Rivers & Streams
- Ranger District Boundary
- Spotted Owl Protected Activity Centers
- Water Bodies



**Ranger Districts & Recent Fire Extents**

MODIS Points: 30 April 2008 AM

! 30 April 2008

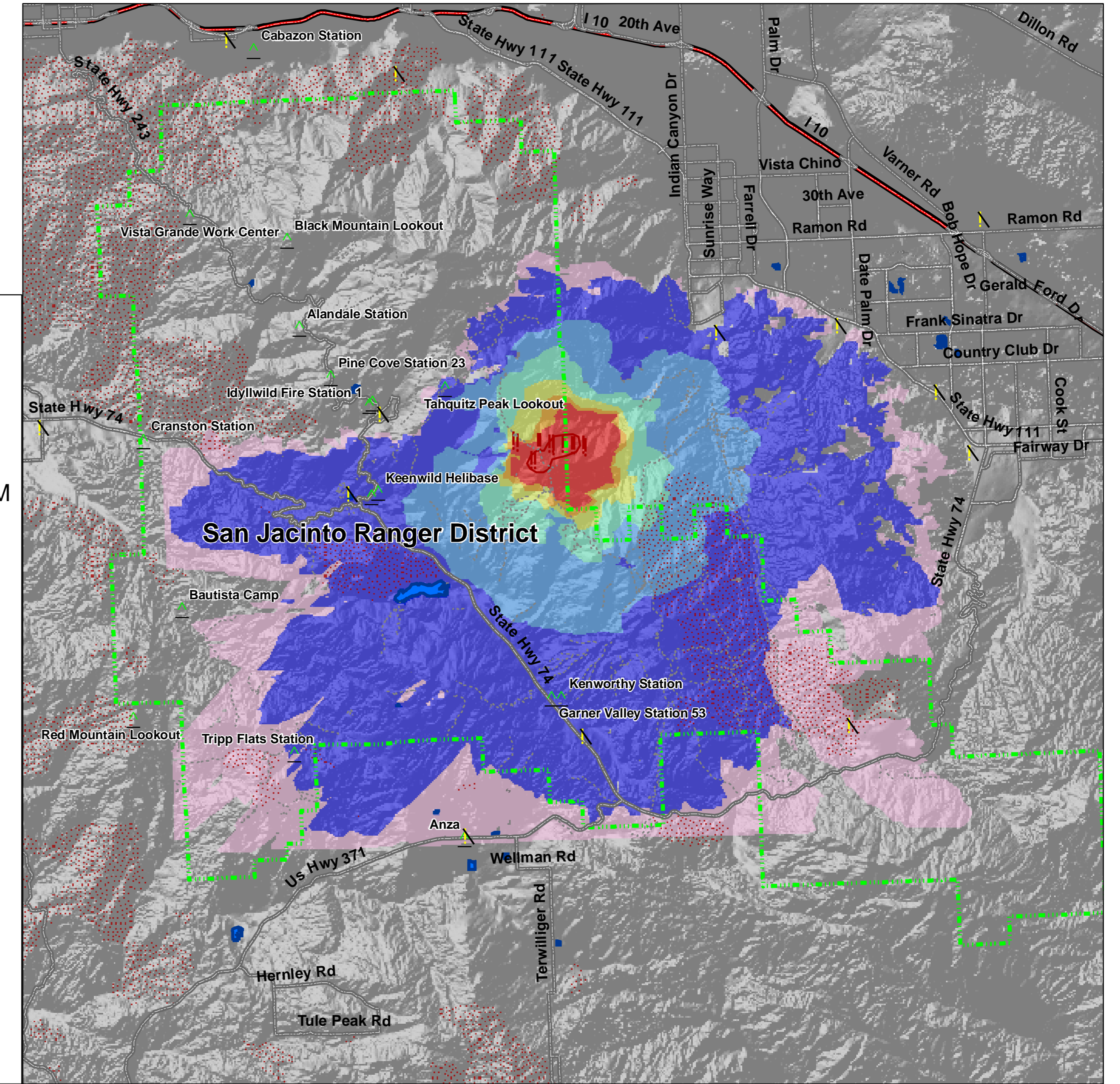
Fire Perimeter: 30 April 2008 AM

• Past Fires CA 1994 - 2006

**FSPro Fire Spread Probability**

- > 80 %
- 60 - 80 %
- 40 - 60 %
- 20 - 40 %
- 5 - 20 %
- 1 - 5 %
- < 1 %

- Communities at Risk
- Forest Service Facilities
- Interstates
- Major Roads
- Trails (USFS)
- Ranger District Boundary
- Water Bodies



**Direct Protection Areas**

Fire Perimeter: 30 April 2008 AM

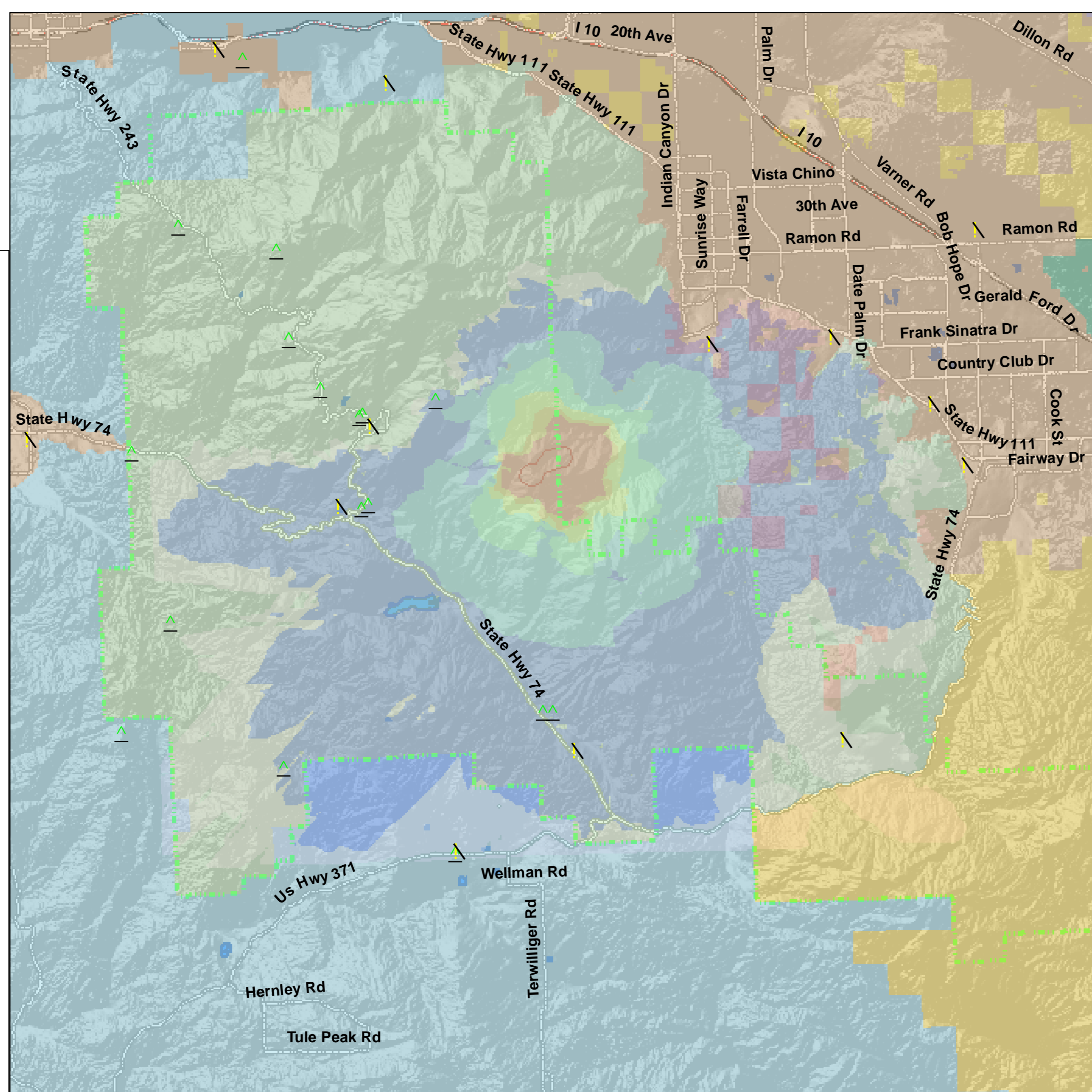
**FSPro Fire Spread Probability**

- > 80 %
- 60 - 80 %
- 40 - 60 %
- 20 - 40 %
- 5 - 20 %
- 1 - 5 %
- < 1 %

- Communities at Risk
- Forest Service Facilities
- Interstates
- Major Roads
- Ranger District Boundary

**Direct Protection Areas**

- BLM
- CDF
- LOCAL
- NPS
- UFW
- USF
- Water Bodies



**Recreation Opportunity Spectrum Zones**

Fire Perimeter: 30 April 2008 AM

**FSPro Fire Spread Probability**

- > 80 %
- 60 - 80 %
- 40 - 60 %
- 20 - 40 %
- 5 - 20 %
- 1 - 5 %
- < 1 %

- Communities at Risk
- Forest Service Facilities
- Interstates
- Major Roads
- Ranger District Boundary

**Recreation Opportunity Spectrum Zones**

- Natural/Roaded
- Primitive/Non-motorized
- Rural
- Semi-Primitive/Motorized
- Semi-Primitive/Non-motorized
- Water Bodies

