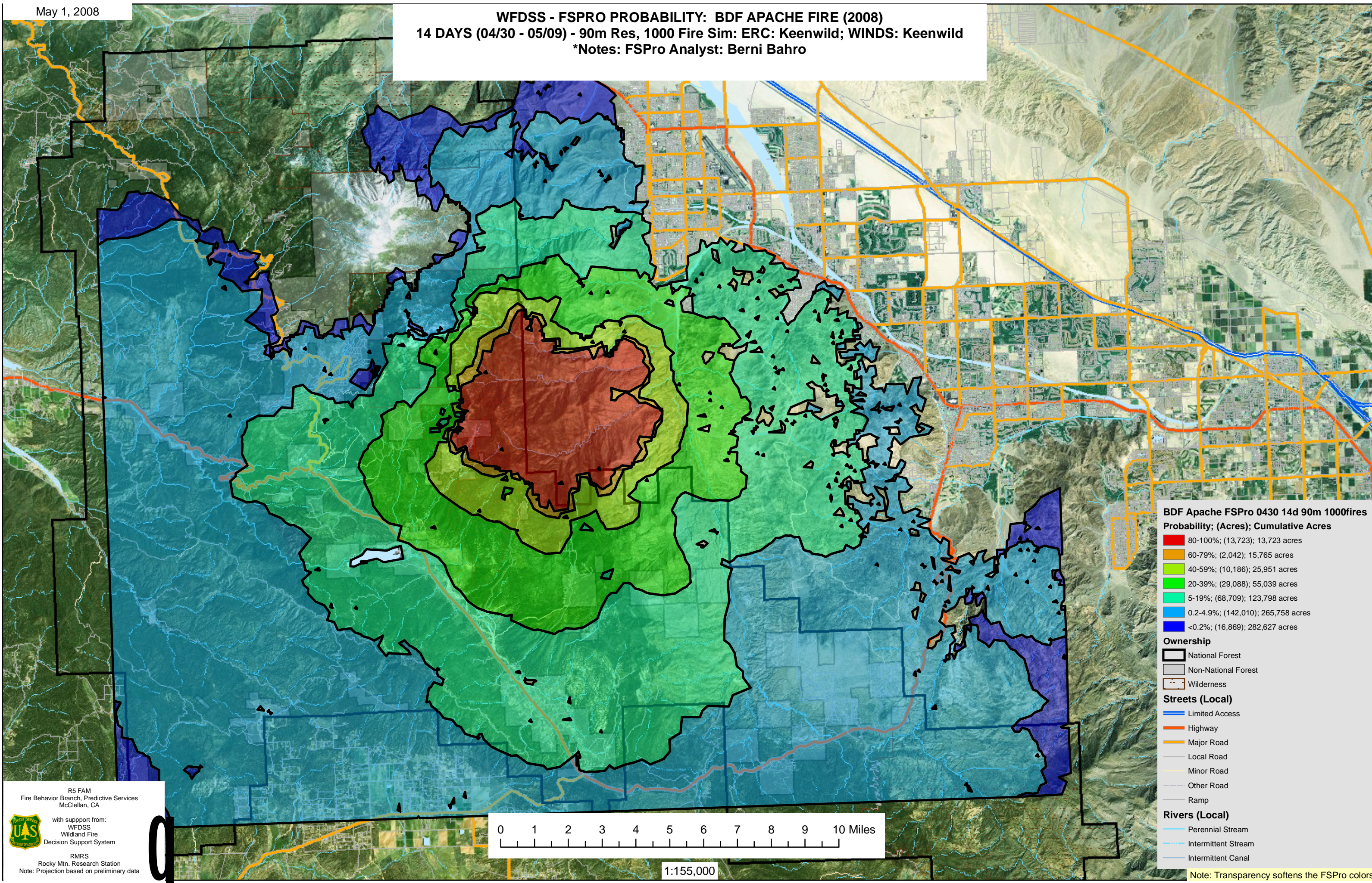


**WFDSS - FSPRO PROBABILITY: BDF APACHE FIRE (2008)**  
14 DAYS (04/30 - 05/09) - 90m Res, 1000 Fire Sim: ERC: Keenwild; WINDS: Keenwild  
\*Notes: FSPro Analyst: Berni Bahro



**BDF Apache FSPro 0430 14d 90m 1000fires**  
Probability; (Acres); Cumulative Acres

- 80-100%; (13,723); 13,723 acres
- 60-79%; (2,042); 15,765 acres
- 40-59%; (10,186); 25,951 acres
- 20-39%; (29,088); 55,039 acres
- 5-19%; (68,709); 123,798 acres
- 0.2-4.9%; (142,010); 265,758 acres
- <0.2%; (16,869); 282,627 acres

**Ownership**

- National Forest
- Non-National Forest
- Wilderness

**Streets (Local)**

- Limited Access
- Highway
- Major Road
- Local Road
- Minor Road
- Other Road
- Ramp

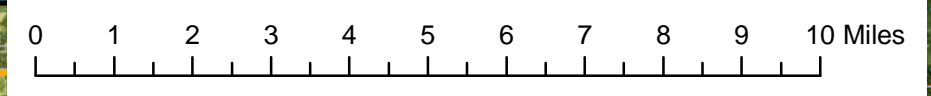
**Rivers (Local)**

- Perennial Stream
- Intermittent Stream
- Intermittent Canal

R5 FAM  
Fire Behavior Branch, Predictive Services  
McClellan, CA

with support from:  
WFDSS  
Wildland Fire  
Decision Support System

RMRS  
Rocky Mtn. Research Station  
Note: Projection based on preliminary data



1:155,000

Note: Transparency softens the FSPro colors