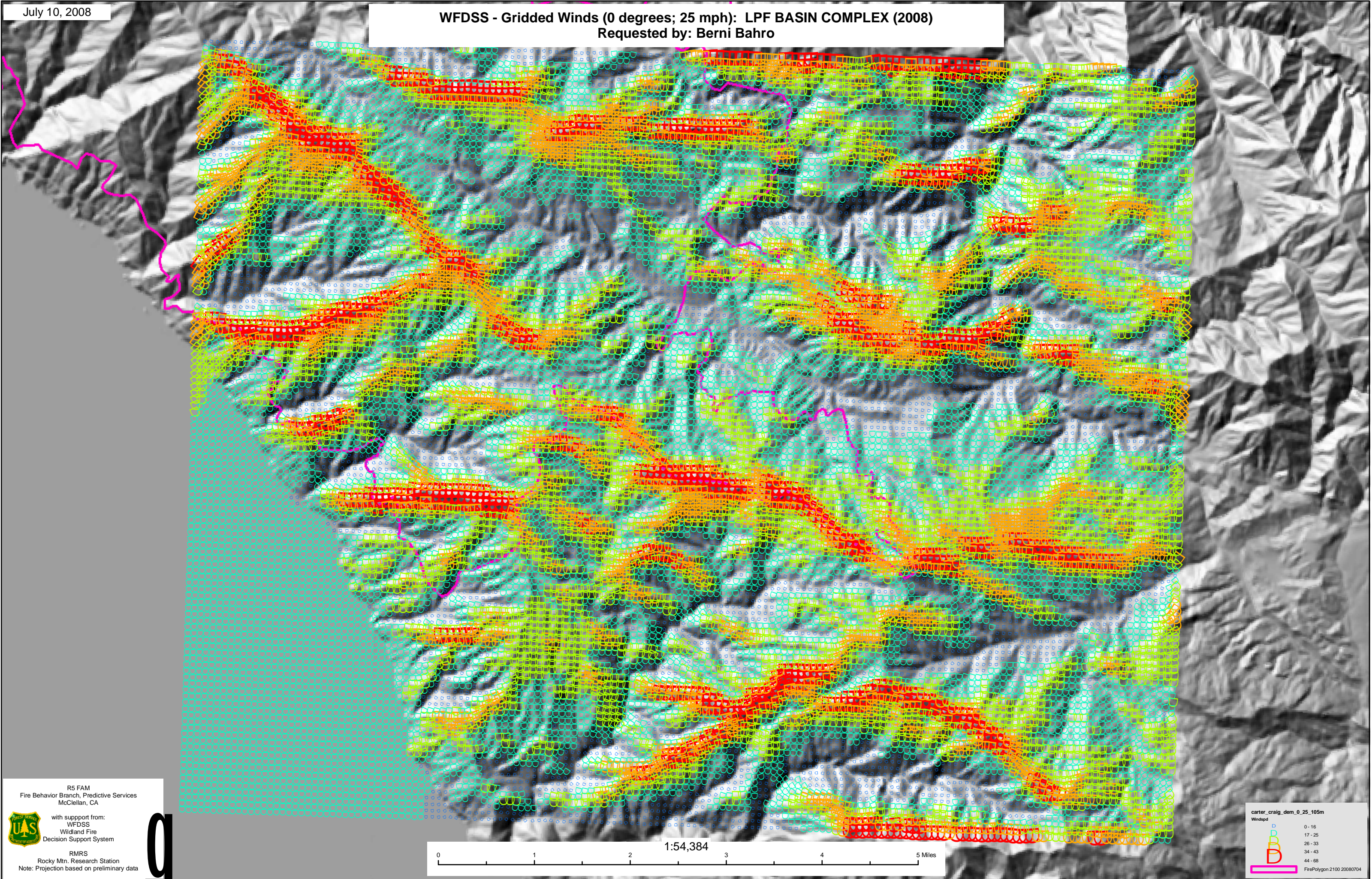


July 10, 2008

WFDSS - Gridded Winds (0 degrees; 25 mph): LPF BASIN COMPLEX (2008)
Requested by: Berni Bahro



R5 FAM
Fire Behavior Branch, Predictive Services
McClellan, CA

with support from:
WFDSS
Wildland Fire
Decision Support System

RMRS
Rocky Mtn. Research Station
Note: Projection based on preliminary data

Windspeed

0 - 16
17 - 25
26 - 33
34 - 43
44 - 68

FirePolygon 2100 20080704