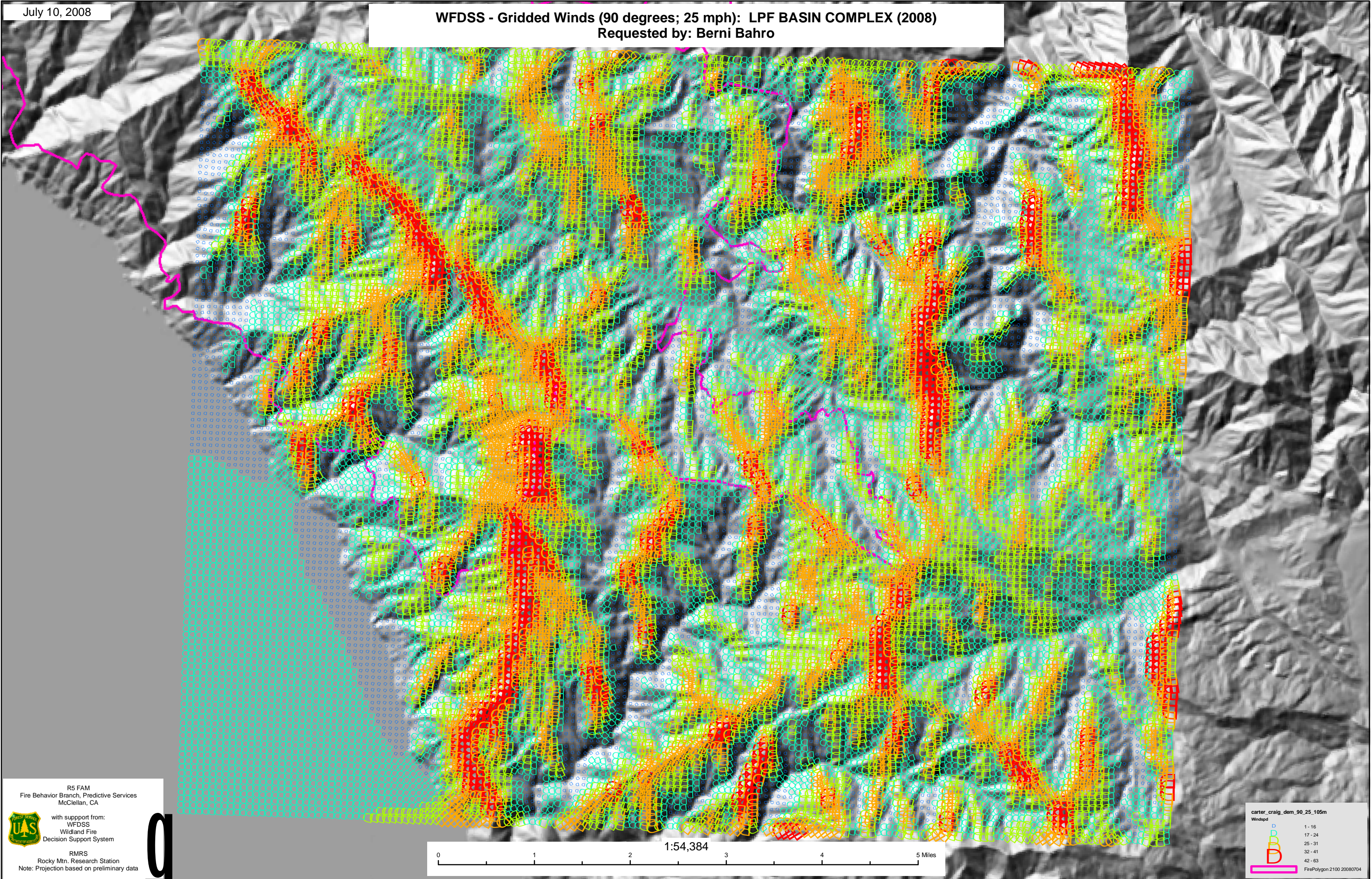


July 10, 2008

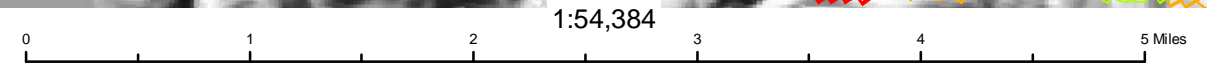
WFDSS - Gridded Winds (90 degrees; 25 mph): LPF BASIN COMPLEX (2008)  
Requested by: Berni Bahro



R5 FAM  
Fire Behavior Branch, Predictive Services  
McClellan, CA

with support from:  
WFDSS  
Wildland Fire  
Decision Support System

RMRS  
Rocky Mtn. Research Station  
Note: Projection based on preliminary data



Windspeed

1 - 16
17 - 24
25 - 31
32 - 41
42 - 63

FirePolygon 2100 20080704