

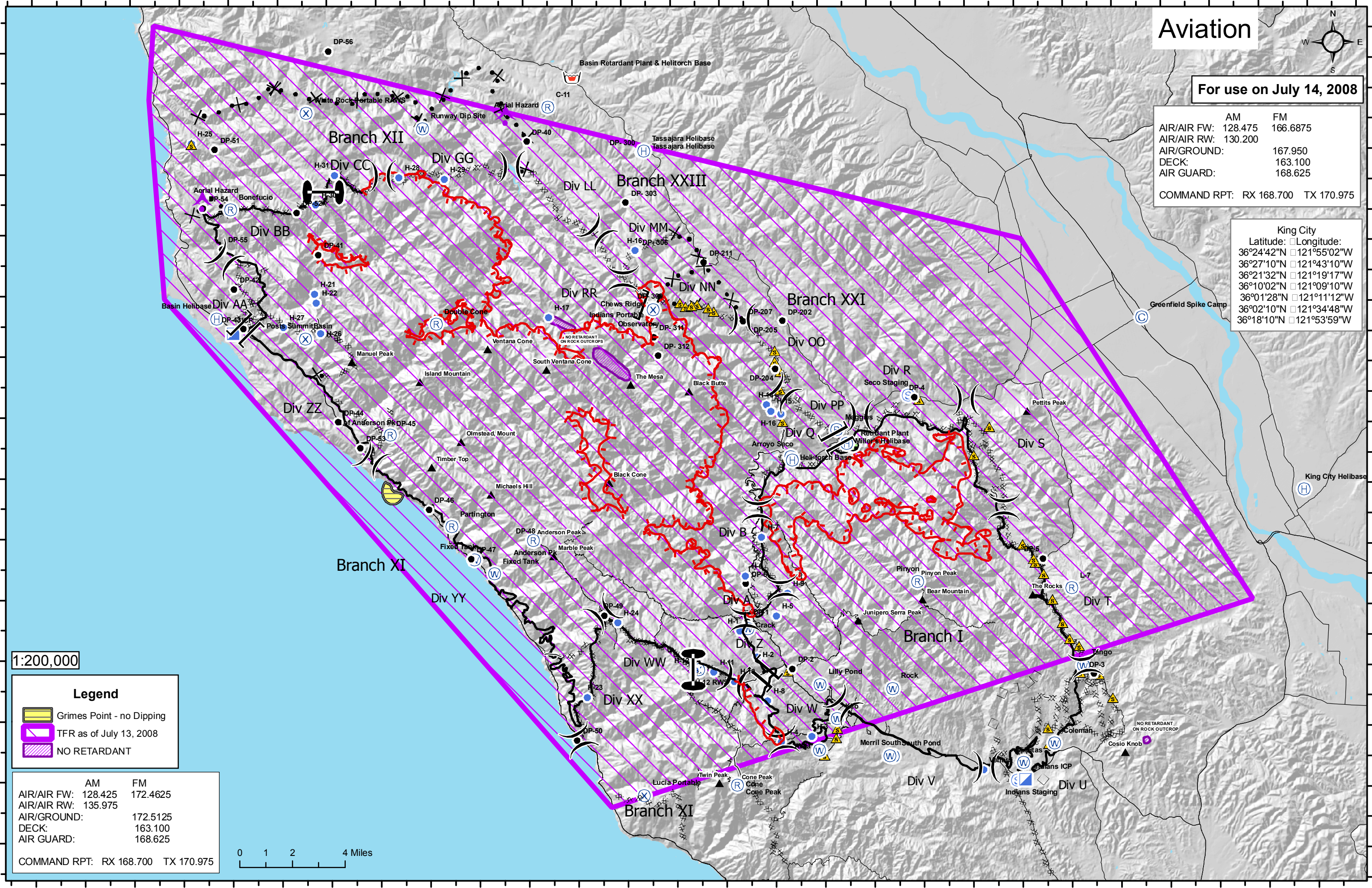
Aviation

For use on July 14, 2008

	AM	FM
AIR/AIR FW:	128.475	166.6875
AIR/AIR RW:	130.200	
AIR/GROUND:		167.950
DECK:		163.100
AIR GUARD:		168.625
COMMAND RPT: RX 168.700 TX 170.975		

King City

Latitude:	Longitude:
36°24'42"N	121°55'02"W
36°27'10"N	121°43'10"W
36°21'32"N	121°19'17"W
36°10'02"N	121°09'10"W
36°01'28"N	121°11'12"W
36°02'10"N	121°34'48"W
36°18'10"N	121°53'59"W



1:200,000

Legend

- Grimes Point - no Dipping
- TFR as of July 13, 2008
- NO RETARDANT

	AM	FM
AIR/AIR FW:	128.425	172.4625
AIR/AIR RW:	135.975	
AIR/GROUND:		172.5125
DECK:		163.100
AIR GUARD:		168.625
COMMAND RPT: RX 168.700 TX 170.975		

