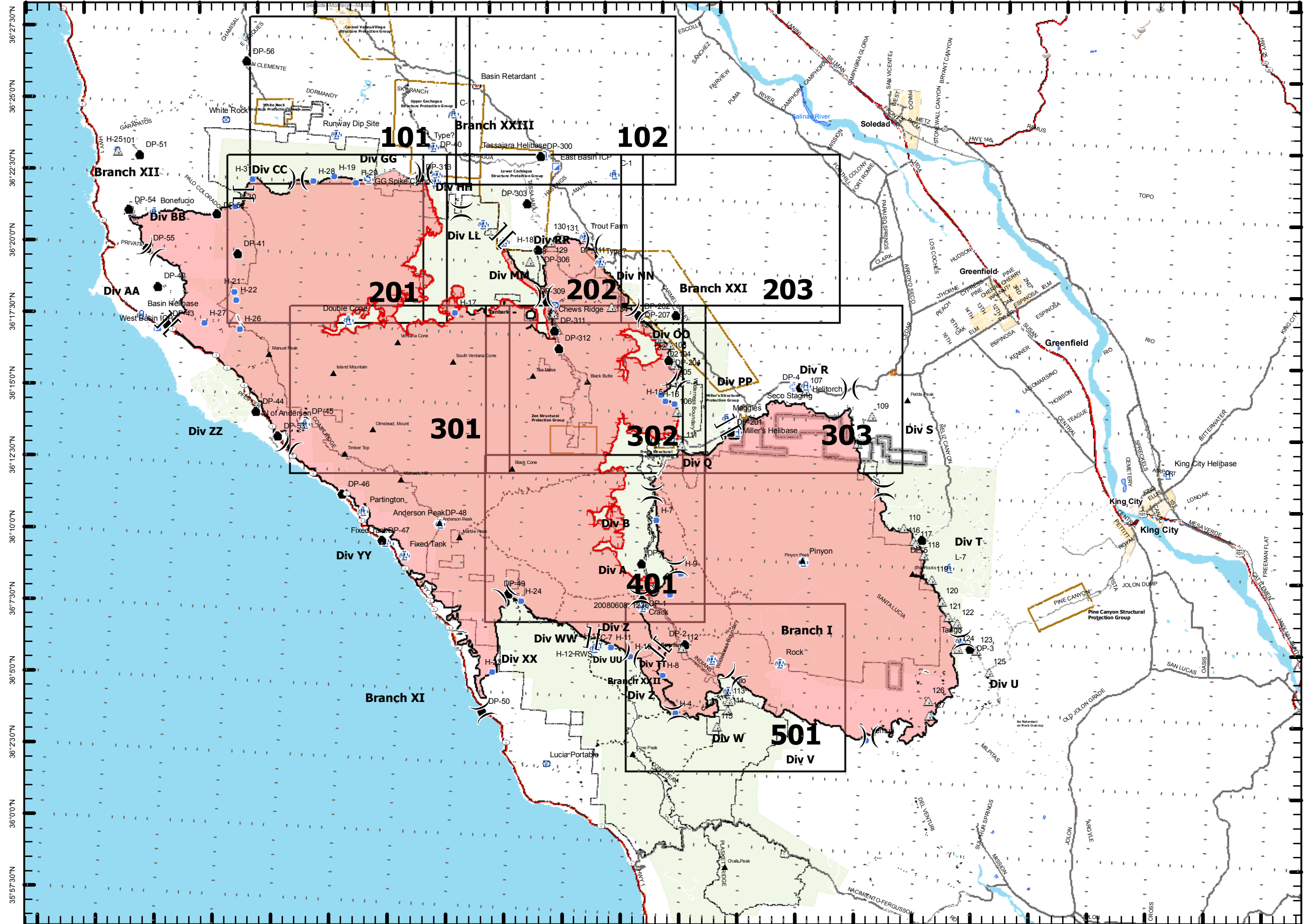


121°57'30"W 121°55'0"W 121°52'30"W 121°50'0"W 121°47'30"W 121°45'0"W 121°42'30"W 121°40'0"W 121°37'30"W 121°35'0"W 121°32'30"W 121°30'0"W 121°27'30"W 121°25'0"W 121°22'30"W 121°20'0"W 121°17'30"W 121°15'0"W 121°12'30"W 121°10'0"W 121°7'30"W 121°5'0"W 121°2'30"W



121°55'0"W 121°52'30"W 121°50'0"W 121°47'30"W 121°45'0"W 121°42'30"W 121°40'0"W 121°37'30"W 121°35'0"W 121°32'30"W 121°30'0"W 121°27'30"W 121°25'0"W 121°22'30"W 121°20'0"W 121°17'30"W 121°15'0"W 121°12'30"W 121°10'0"W 121°7'30"W 121°5'0"W 121°2'30"W

Basin Complex

CA-LPF-001715
July 23, 2008, 1800
Basin Complex 142,617 Acres



Perimeter as of: 07/23/08, 0900

Legend

- Incident Command Post
- Retardant/Mud Pit
- Camp
- Staging Area
- Helibase
- Repeater
- Drop Point
- Helispot
- Water Source
- Safety Zone
- Division
- Branch
- Uncontrolled Fire Edge
- Completed Dozer Line
- Completed Line
- Planned Fire Line
- Proposed Dozer Line
- Hand Line
- Road Hazard
- Wilderness
- Structure Protection Group
- No Retardant



0 1 2
Miles
Contour Interval 80 feet
Scale: 1:235,000