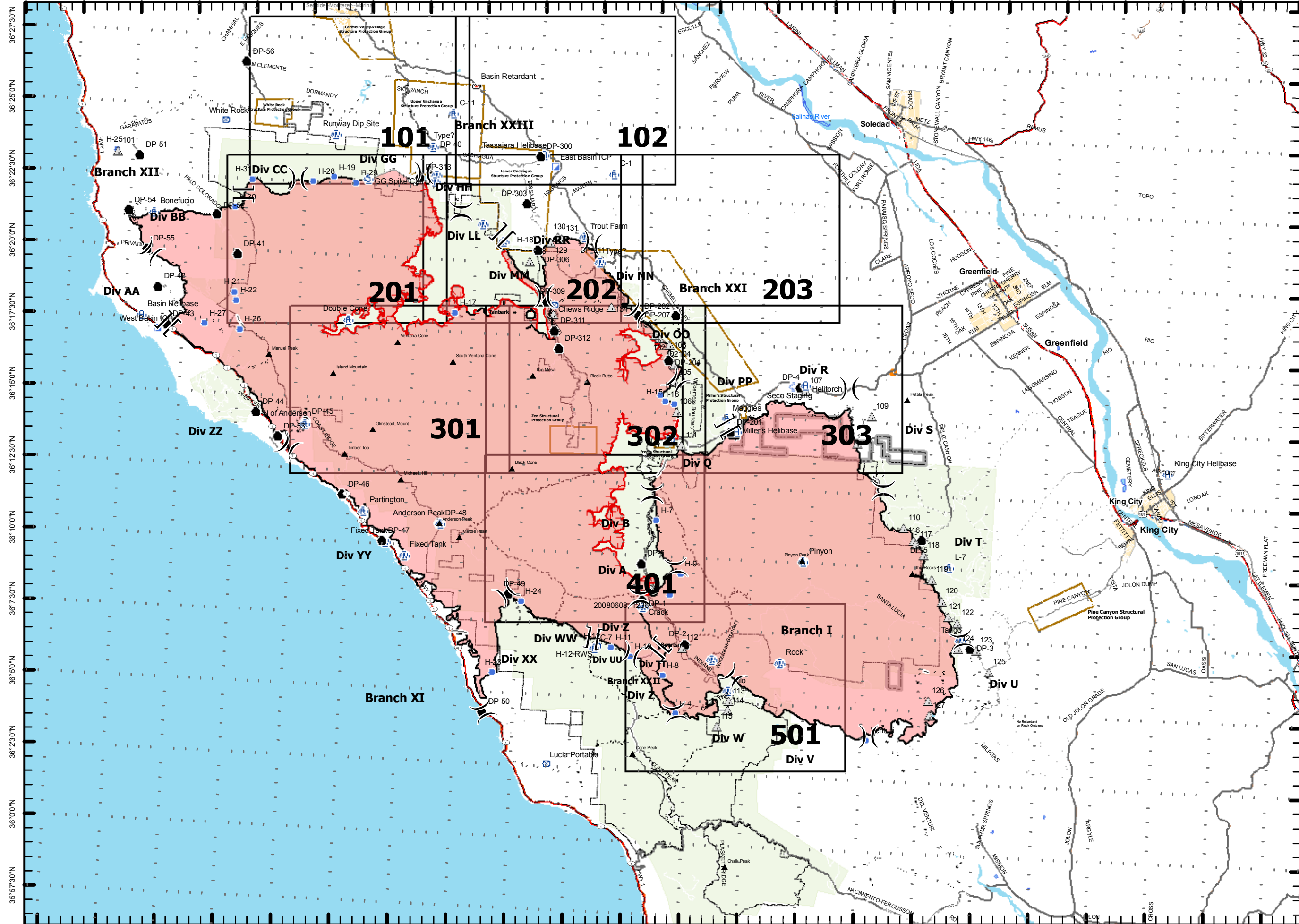


121°57'30"W 121°55'0"W 121°52'30"W 121°50'0"W 121°47'30"W 121°45'0"W 121°42'30"W 121°40'0"W 121°37'30"W 121°35'0"W 121°32'30"W 121°30'0"W 121°27'30"W 121°25'0"W 121°22'30"W 121°20'0"W 121°17'30"W 121°15'0"W 121°12'30"W 121°10'0"W 121°7'30"W 121°5'0"W 121°2'30"W



Basin Complex

CA-LPF-001715
July 23, 2008, 1800
Basin Complex 142,617 Acres



Perimeter as of: 07/23/08, 0900

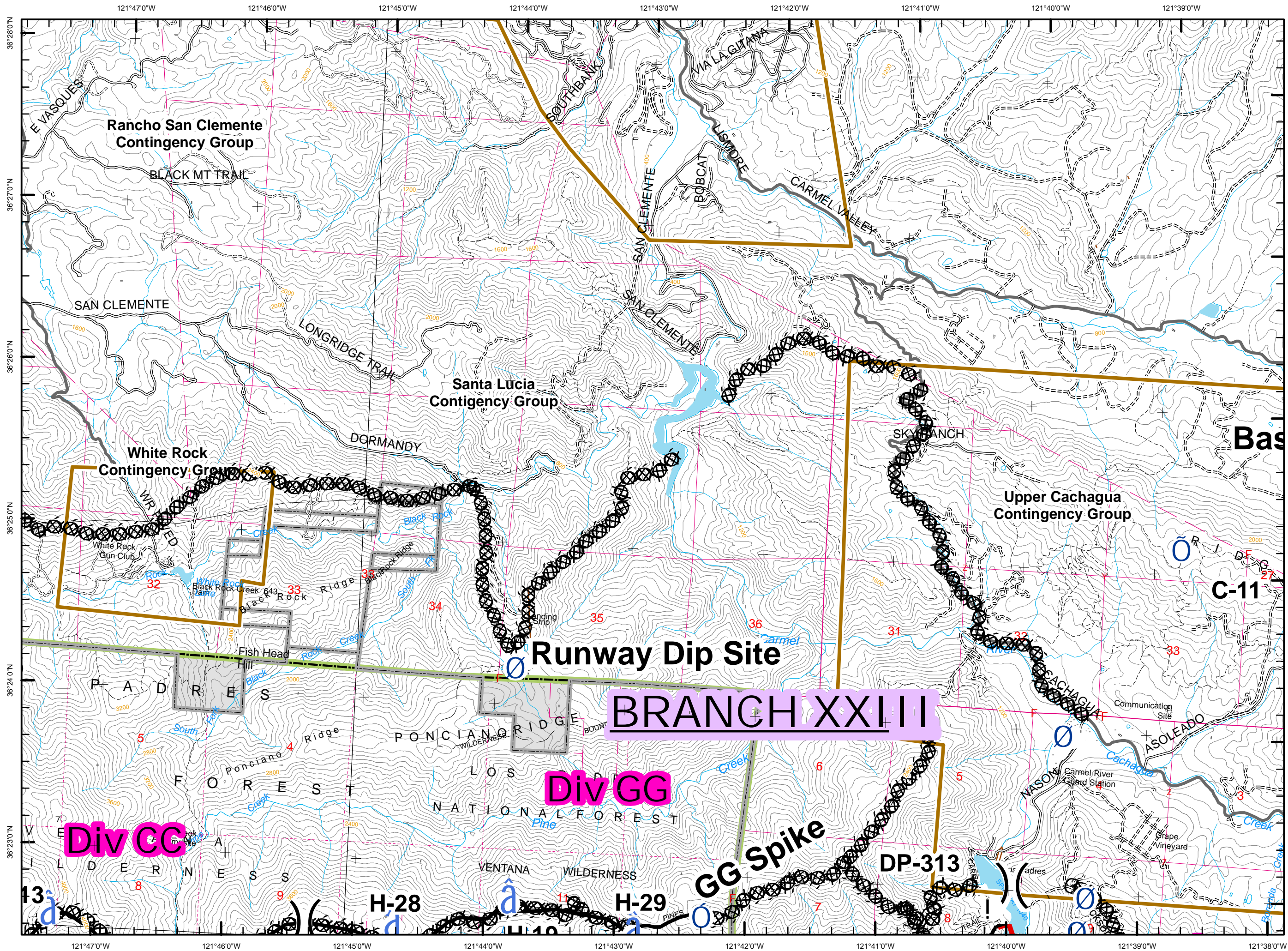
Legend

- Incident Command Post
- Retardant/Mud Pit
- Camp
- Staging Area
- Helibase
- Repeater
- Drop Point
- Helispot
- Water Source
- Safety Zone
- Division
- Branch
- Uncontrolled Fire Edge
- Completed Dozer Line
- Completed Line
- Planned Fire Line
- Proposed Dozer Line
- Hand Line
- Road Hazard
- Wilderness
- Structure Protection Group
- No Retardant



0 1 2
Miles
Contour Interval 80 feet
Scale: 1:235,000

121°55'0"W 121°52'30"W 121°50'0"W 121°47'30"W 121°45'0"W 121°42'30"W 121°40'0"W 121°37'30"W 121°35'0"W 121°32'30"W 121°30'0"W 121°27'30"W 121°25'0"W 121°22'30"W 121°20'0"W 121°17'30"W 121°15'0"W 121°12'30"W 121°10'0"W 121°7'30"W 121°5'0"W 121°2'30"W



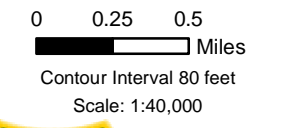
Basin Complex

CA-LPF-001715

F

Legend

	Incident Command Post
	Retardant/Mud Pit
	Camp
	Staging Area
	Helibase
	Repeater
	Drop Point
	Helispot
	Water Source
	Retardant Pickup
	Safety Zone
	Division
	Branch
	Uncontrolled Fire Edge
	Completed Dozer Line
	Completed Line
	Planned Fire Line
	Proposed Dozer Line
	Hand Line
	Road Hazard
	Wilderness
	Structure Protection Group
	No Retardant



101

BRANCH XXIII

Div GG

GG Spike

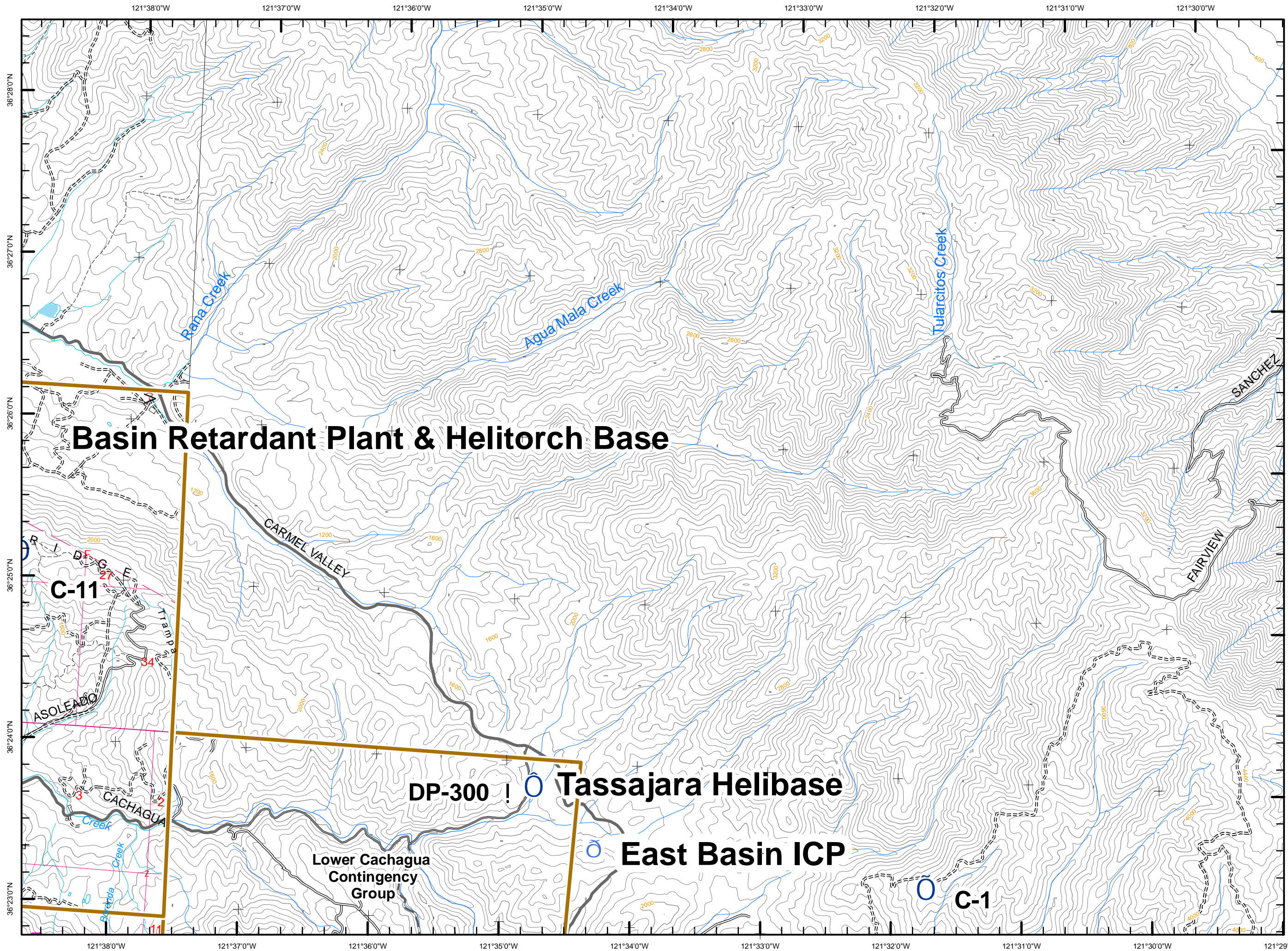
Div CC

H-28

H-29

DP-313

C-11



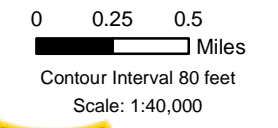
Basin Complex

CA-LPF-001715

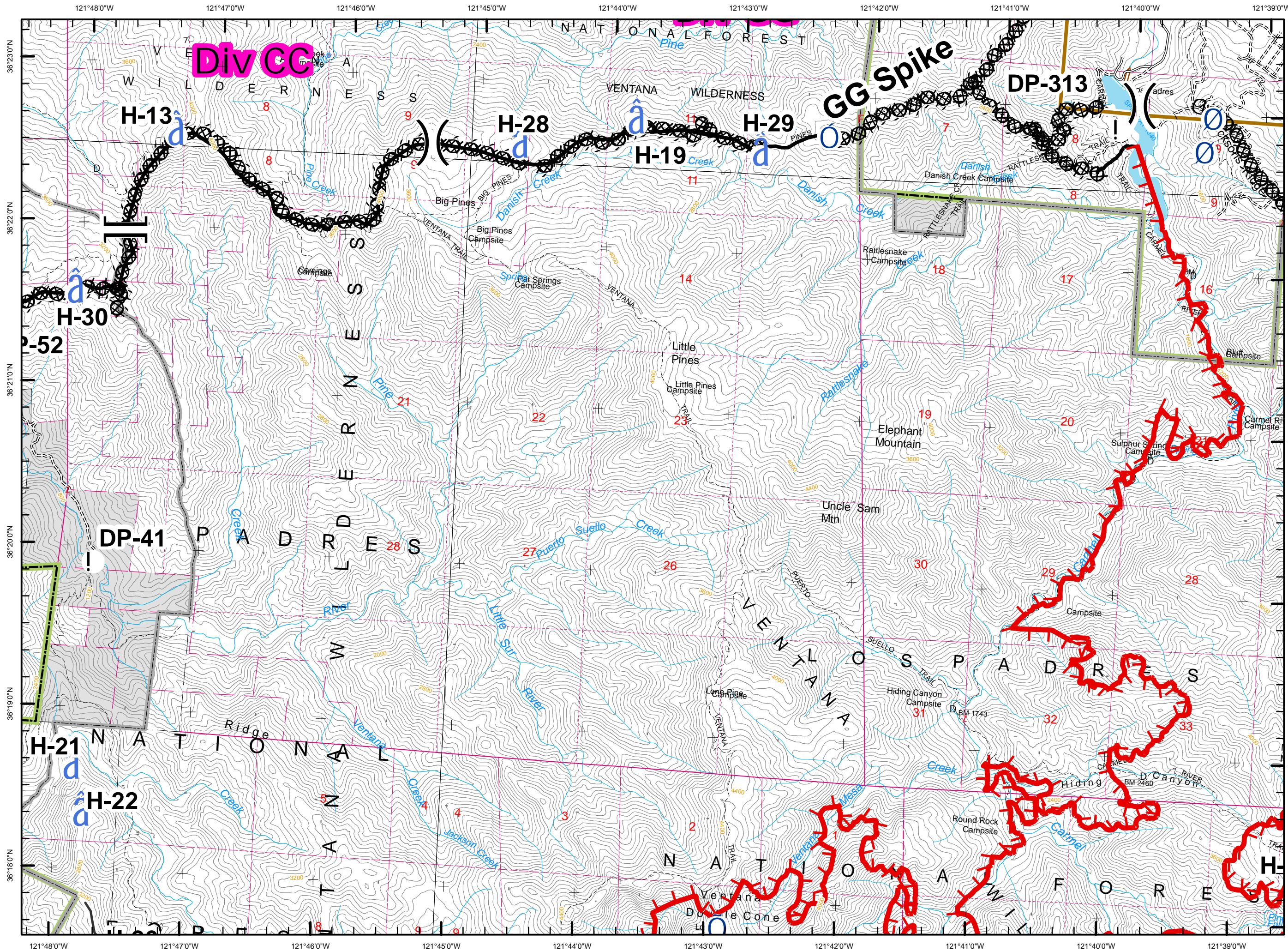
F

Legend

	Incident Command Post
	Retardant/Mud Pit
	Camp
	Staging Area
	Helibase
	Repeater
	Drop Point
	Helispot
	Water Source
	Retardant Pickup
	Safety Zone
	Division
	Branch
	Uncontrolled Fire Edge
	Completed Dozer Line
	Completed Line
	Planned Fire Line
	Proposed Dozer Line
	Hand Line
	Road Hazard
	Wilderness
	Structure Protection Group
	No Retardant



102



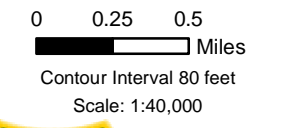
Basin Complex

CA-LPF-001715

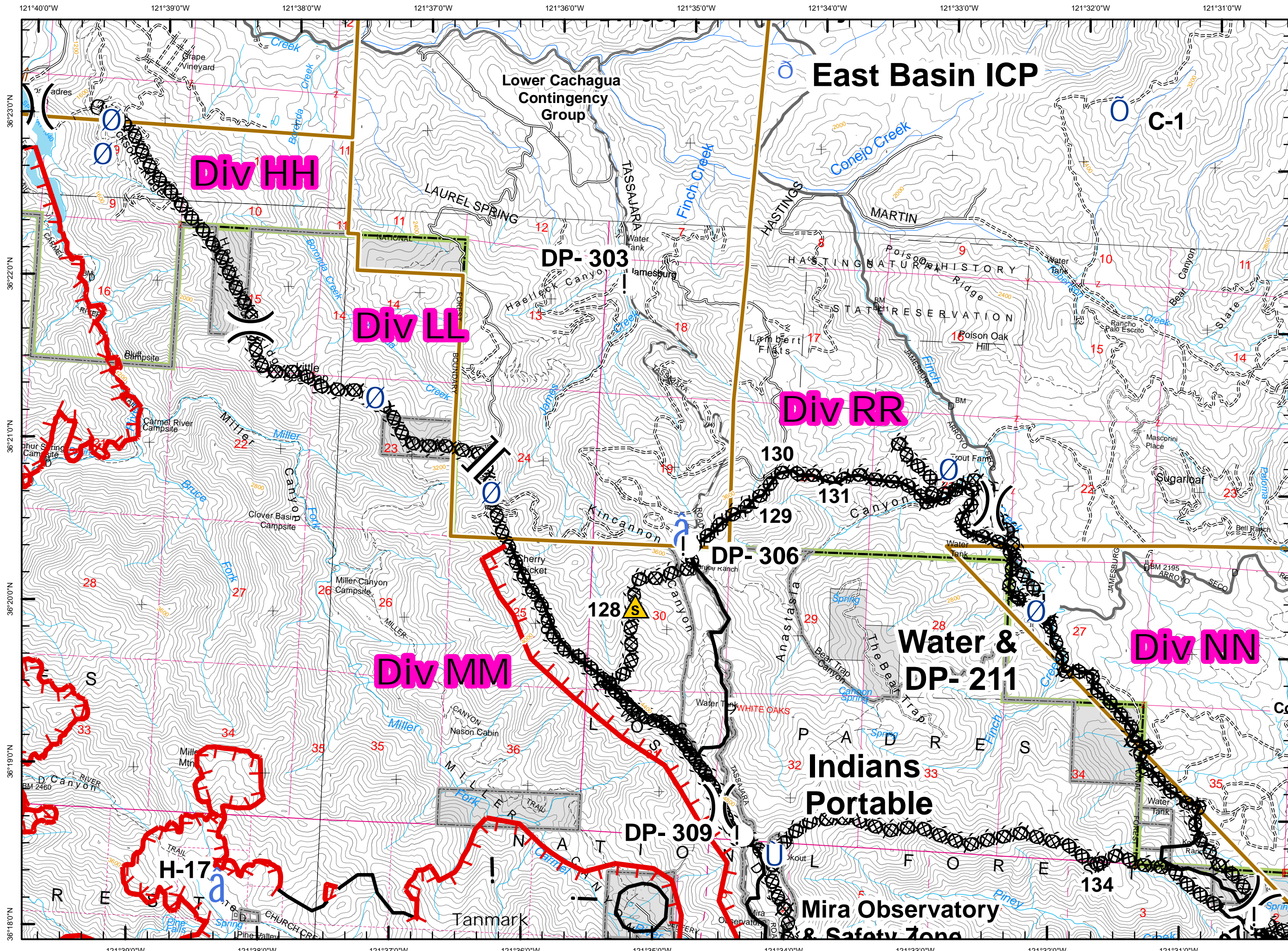
F

Legend

- Incident Command Post
- Retardant/Mud Pit
- Camp
- Staging Area
- Helibase
- Repeater
- Drop Point
- Helispot
- Water Source
- Retardant Pickup
- Safety Zone
- Division
- Branch
- Uncontrolled Fire Edge
- Completed Dozer Line
- Completed Line
- Planned Fire Line
- Proposed Dozer Line
- Hand Line
- Road Hazard
- Wilderness
- Structure Protection Group
- No Retardant



201

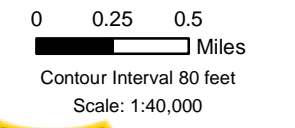


Basin Complex
CA-LPF-001715

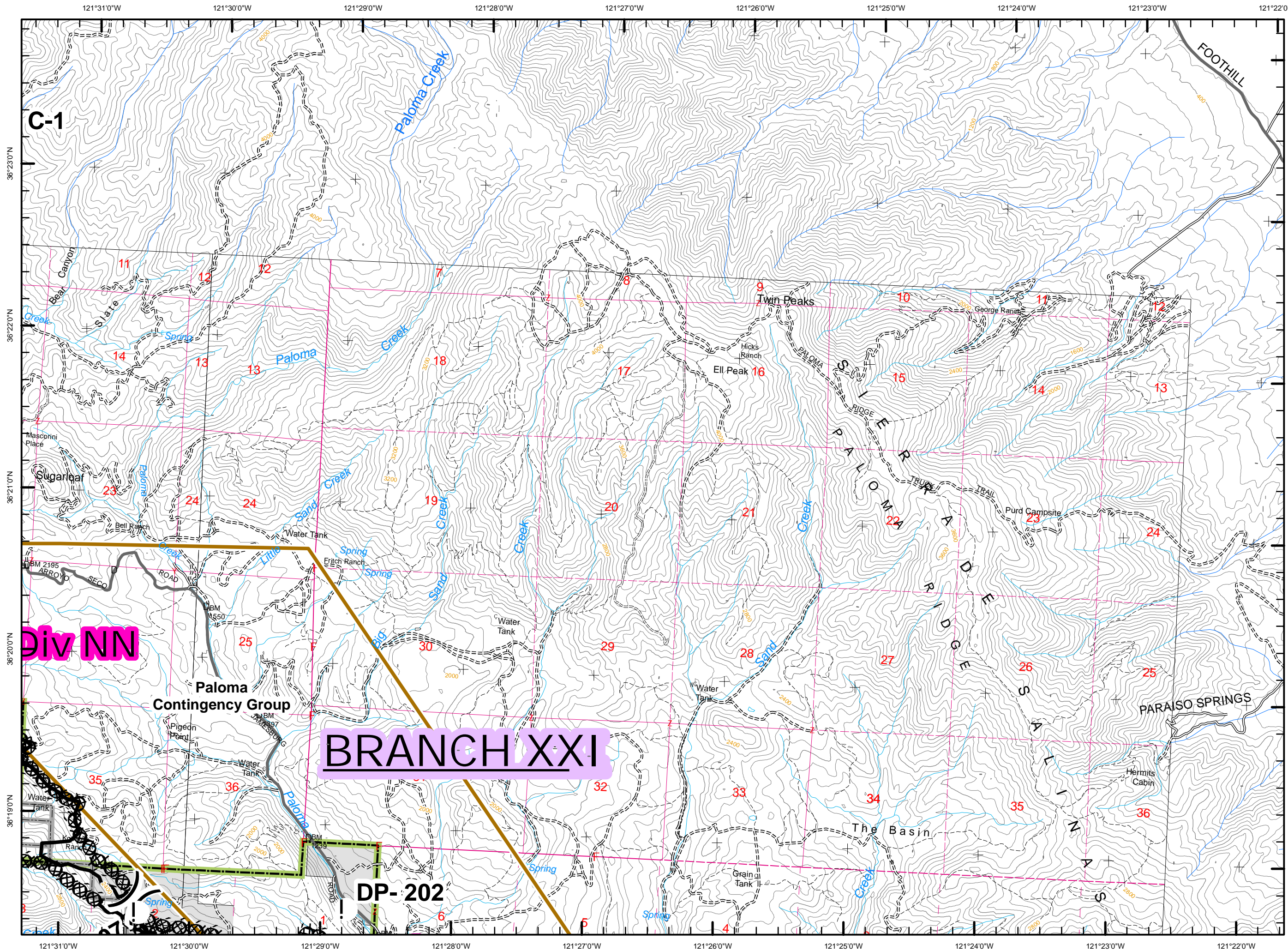
F

Legend

- Incident Command Post
- Retardant/Mud Pit
- Camp
- Staging Area
- Helibase
- Repeater
- Drop Point
- Helispot
- Water Source
- Retardant Pickup
- Safety Zone
- Division
- Branch
- Uncontrolled Fire Edge
- Completed Dozer Line
- Completed Line
- Planned Fire Line
- Proposed Dozer Line
- Hand Line
- Road Hazard
- Wilderness
- Structure Protection Group
- No Retardant



202



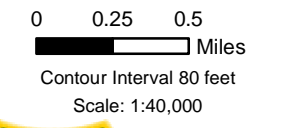
Basin Complex

CA-LPF-001715

F

Legend

- Incident Command Post
- Retardant/Mud Pit
- Camp
- Staging Area
- Helibase
- Repeater
- Drop Point
- Helispot
- Water Source
- Retardant Pickup
- Safety Zone
- Division
- Branch
- Uncontrolled Fire Edge
- Completed Dozer Line
- Completed Line
- Planned Fire Line
- Proposed Dozer Line
- Hand Line
- Road Hazard
- Wilderness
- Structure Protection Group
- No Retardant



203

BRANCH XXI

Paloma Contingency Group

Div NN

DP-202

C-1

FOOTHILL

Twin Peaks

Ell Peak 16

PARAISO SPRINGS

The Basin

Paloma Contingency Group

Div NN

DP-202

C-1

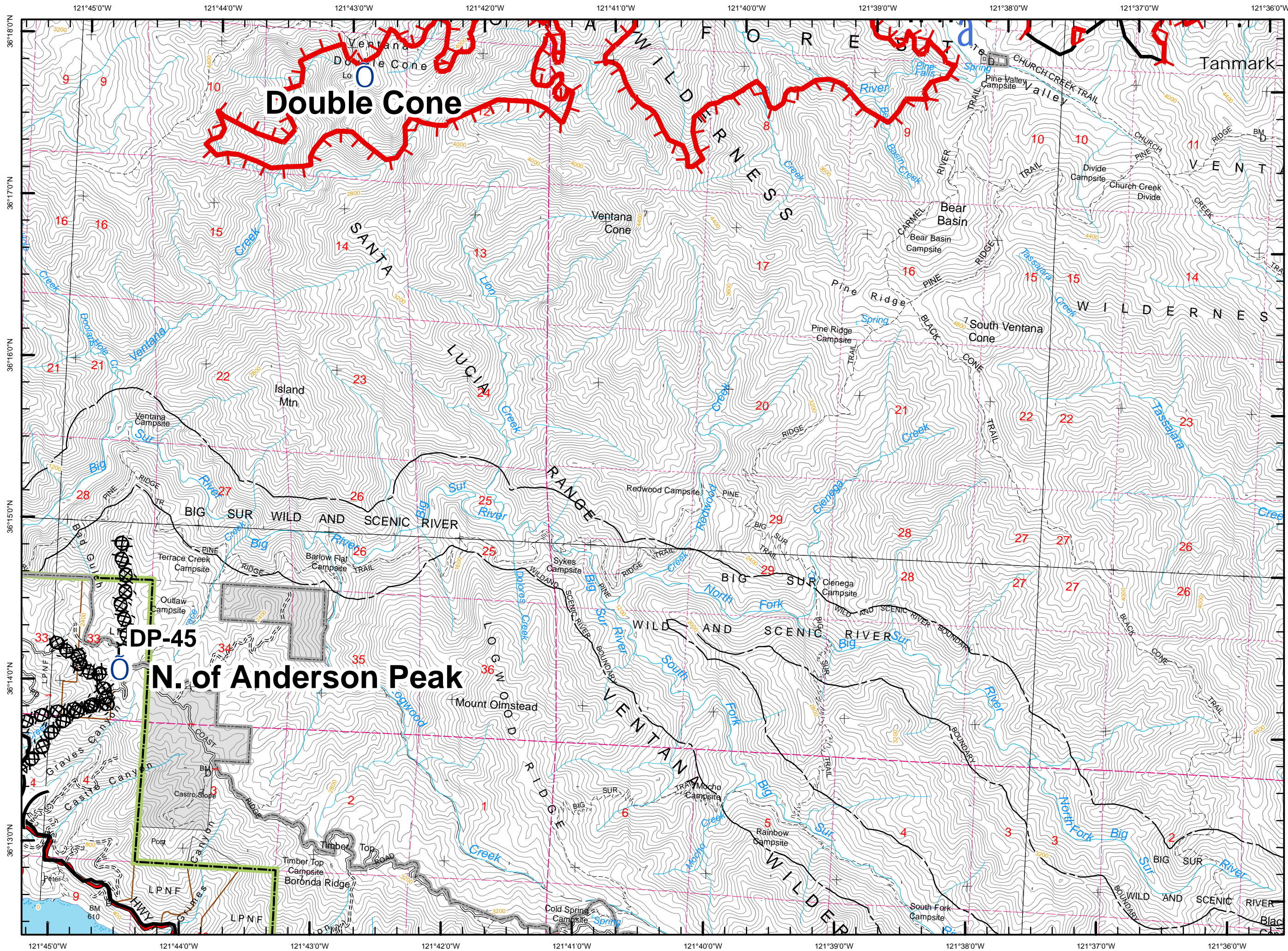
FOOTHILL

Twin Peaks

Ell Peak 16

PARAISO SPRINGS

The Basin



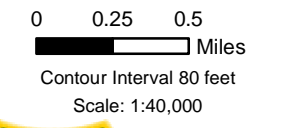
Basin Complex

CA-LPF-001715

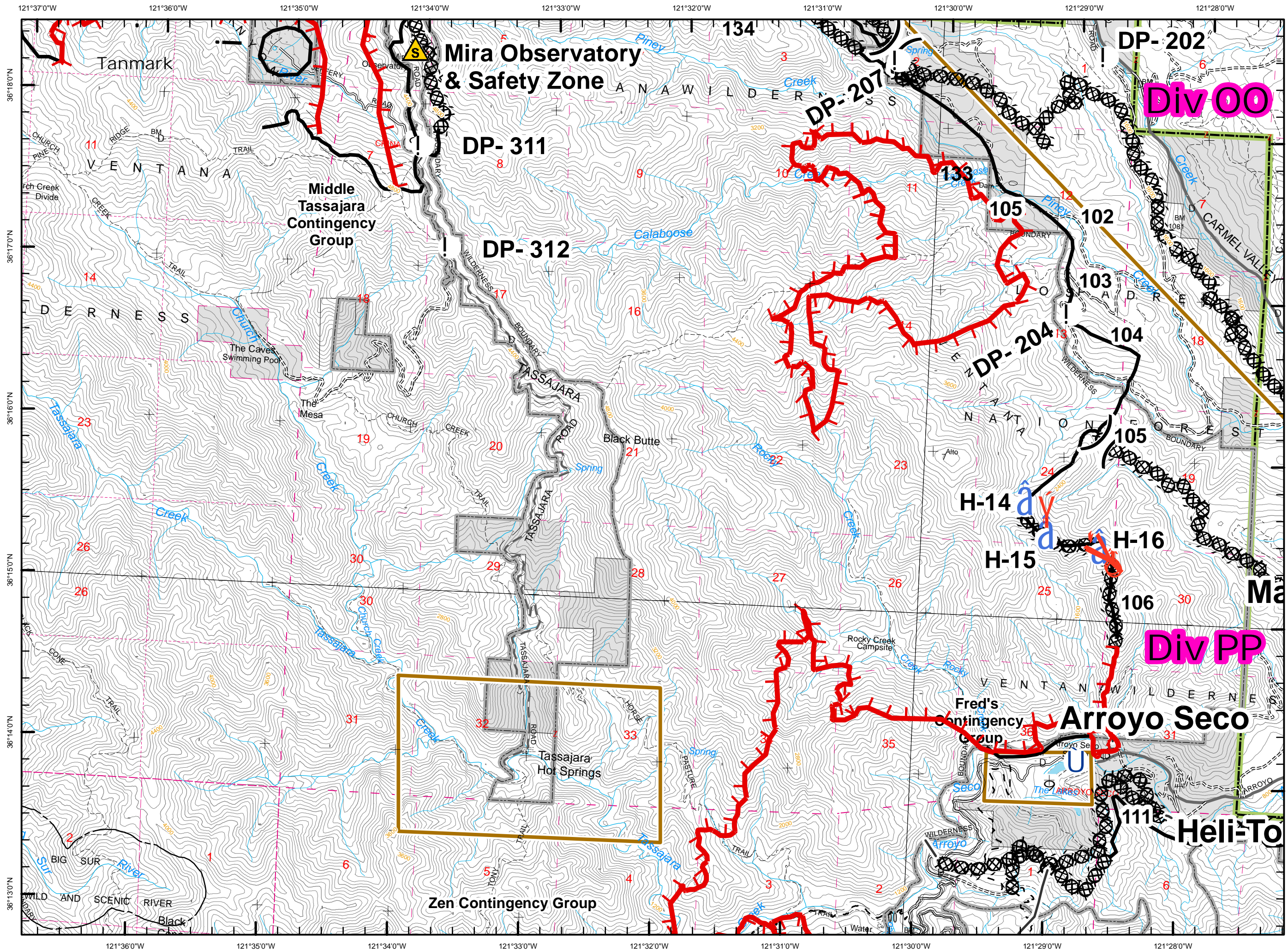
F

Legend

- Incident Command Post
- Retardant/Mud Pit
- Camp
- Staging Area
- Helibase
- Repeater
- Drop Point
- Helispot
- Water Source
- Retardant Pickup
- Safety Zone
- Division
- Branch
- Uncontrolled Fire Edge
- Completed Dozer Line
- Completed Line
- Planned Fire Line
- Proposed Dozer Line
- Hand Line
- Road Hazard
- Wilderness
- Structure Protection Group
- No Retardant



301

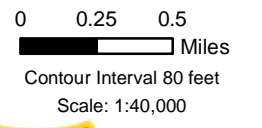


Basin Complex

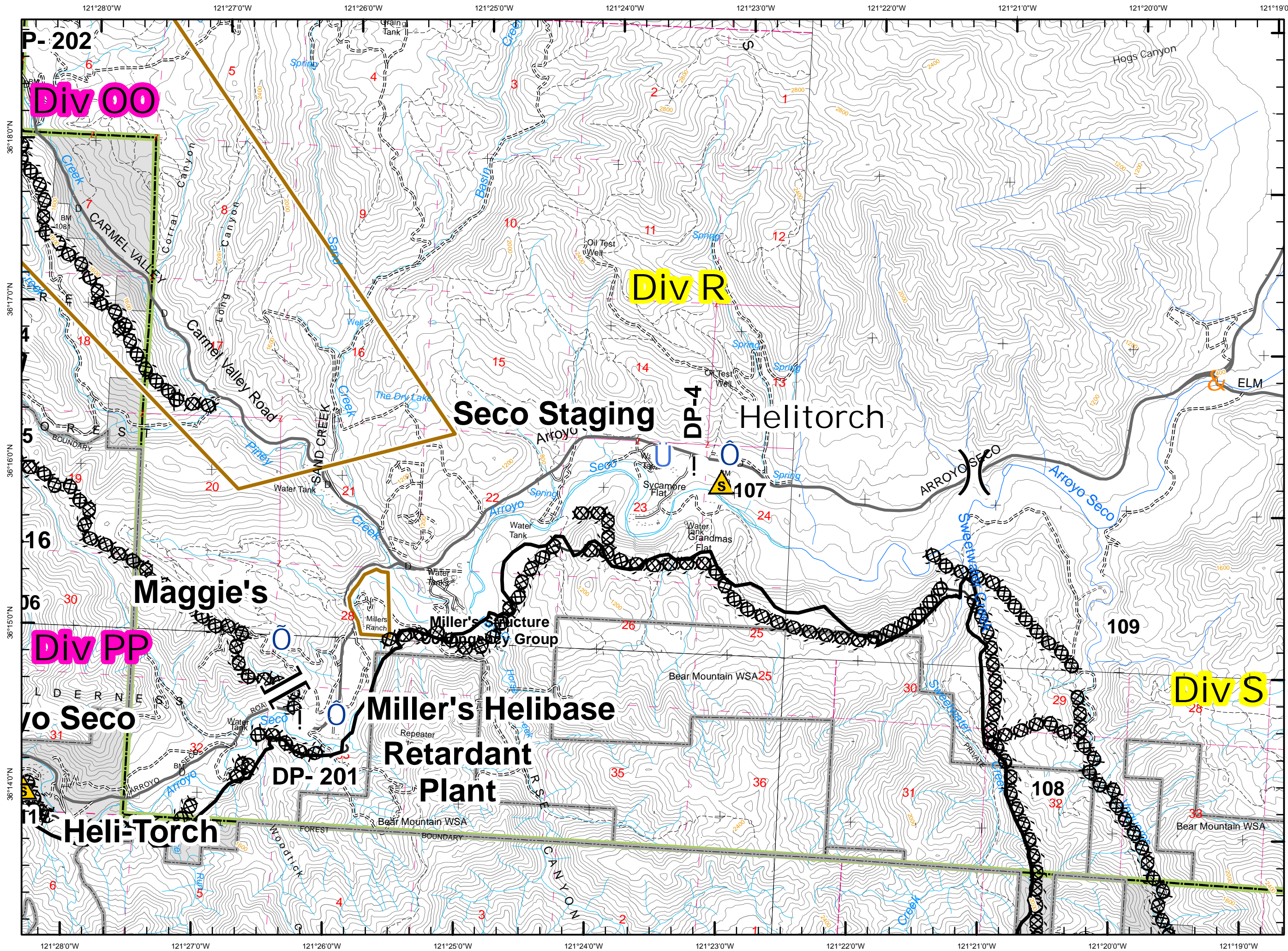
CA-LPF-001715

F

- Legend**
- Incident Command Post
 - Retardant/Mud Pit
 - Camp
 - Staging Area
 - Helibase
 - Repeater
 - Drop Point
 - Helispot
 - Water Source
 - Retardant Pickup
 - Safety Zone
 - Division
 - Branch
 - Uncontrolled Fire Edge
 - Completed Dozer Line
 - Completed Line
 - Planned Fire Line
 - Proposed Dozer Line
 - Hand Line
 - Road Hazard
 - Wilderness
 - Structure Protection Group
 - No Retardant



302

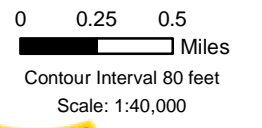


Basin Complex
CA-LPF-001715

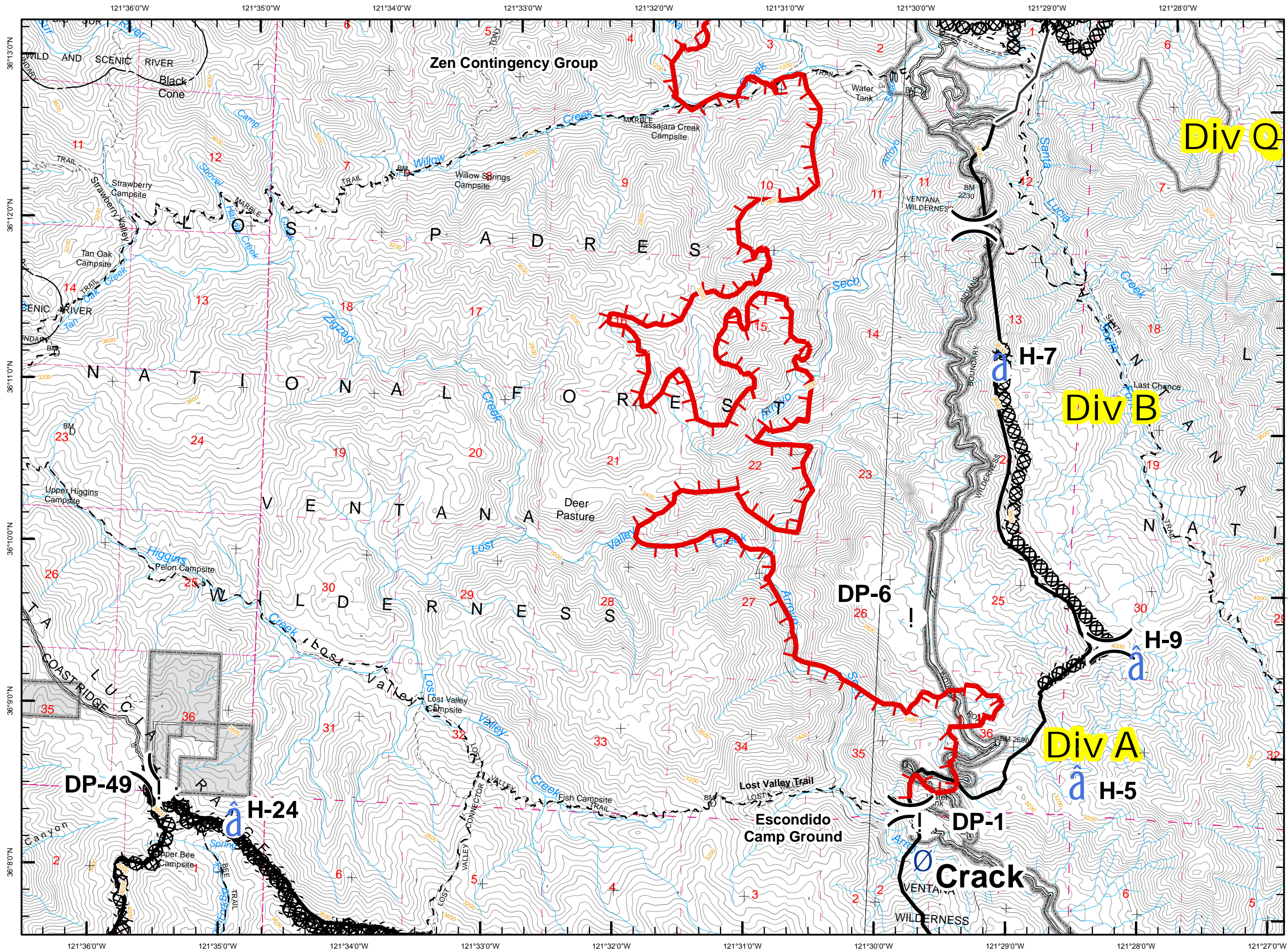
F

Legend

	Incident Command Post
	Retardant/Mud Pit
	Camp
	Staging Area
	Helibase
	Repeater
	Drop Point
	Helispot
	Water Source
	Retardant Pickup
	Safety Zone
	Division
	Branch
	Uncontrolled Fire Edge
	Completed Dozer Line
	Completed Line
	Planned Fire Line
	Proposed Dozer Line
	Hand Line
	Road Hazard
	Wilderness
	Structure Protection Group
	No Retardant



303



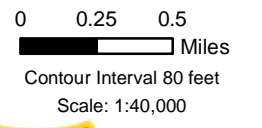
Basin Complex

CA-LPF-001715

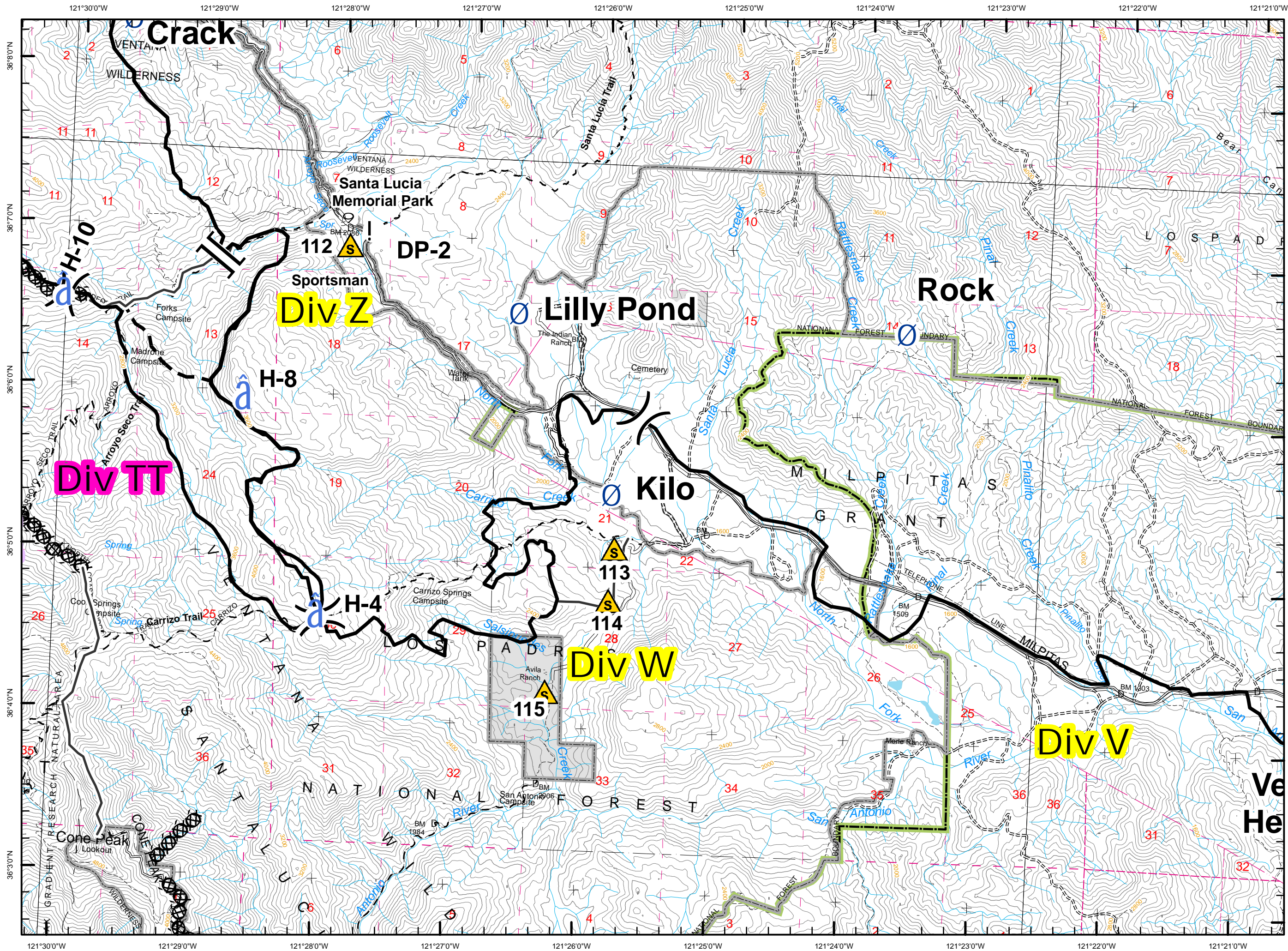
F

Legend

- Incident Command Post
- Retardant/Mud Pit
- Camp
- Staging Area
- Helibase
- Repeater
- Drop Point
- Helispot
- Water Source
- Retardant Pickup
- Safety Zone
- Division
- Branch
- Uncontrolled Fire Edge
- Completed Dozer Line
- Completed Line
- Planned Fire Line
- Proposed Dozer Line
- Hand Line
- Road Hazard
- Wilderness
- Structure Protection Group
- No Retardant



401



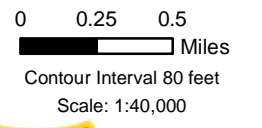
Basin Complex

CA-LPF-001715

F

Legend

- Incident Command Post
- Retardant/Mud Pit
- Camp
- Staging Area
- Helibase
- Repeater
- Drop Point
- Helispot
- Water Source
- Retardant Pickup
- Safety Zone
- Division
- Branch
- Uncontrolled Fire Edge
- Completed Dozer Line
- Completed Line
- Planned Fire Line
- Proposed Dozer Line
- Hand Line
- Road Hazard
- Wilderness
- Structure Protection Group
- No Retardant



501