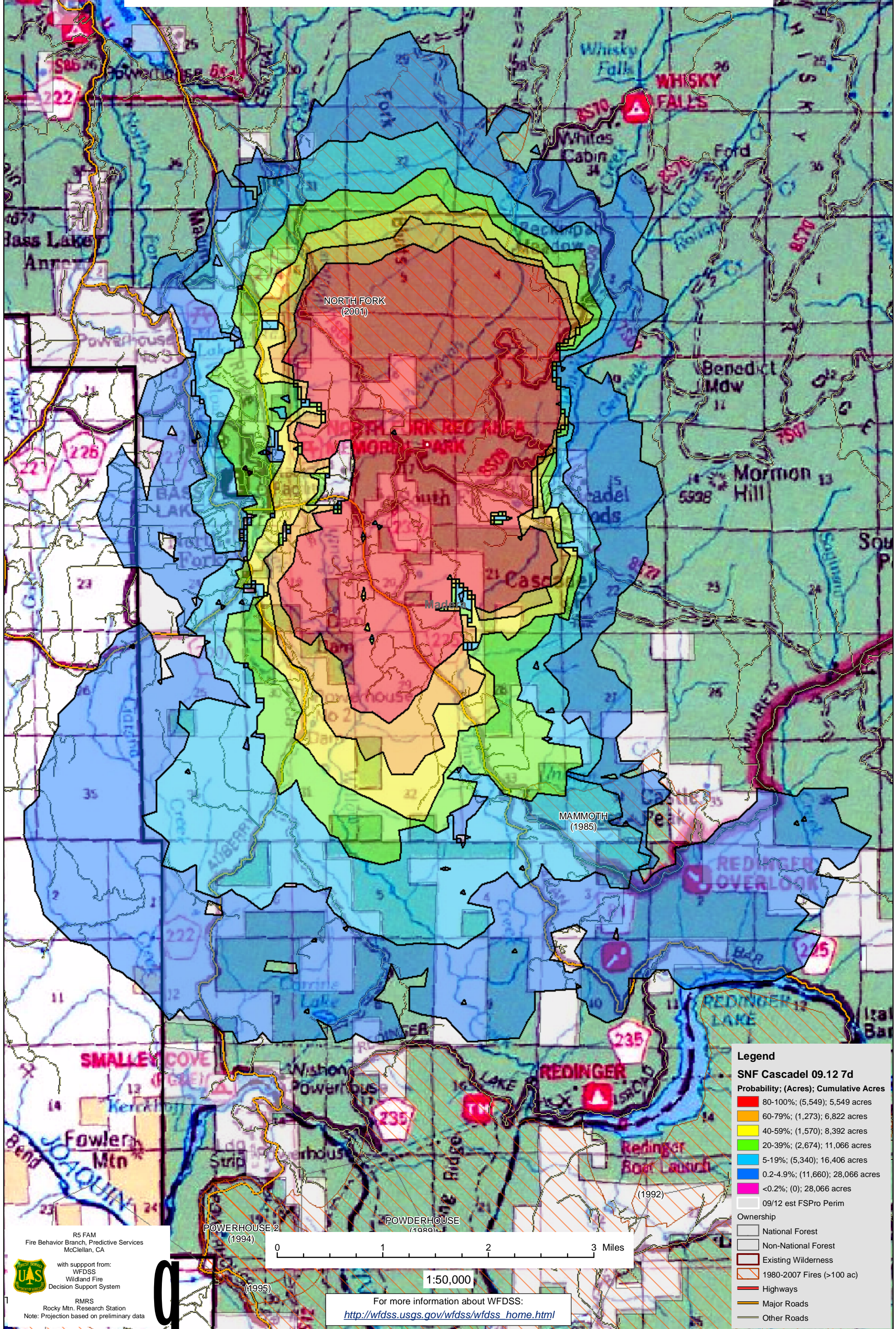


WFDSS - FSPRO PROBABILITY: SNF CASCADEL FIRE (2008)
09/12 - 7 DAYS - 60m Res; 250 Fire Sim; ERC: Northfork WINDS: Northfork;
File: Calibration_2; Analyst: Berni Bahro



Legend

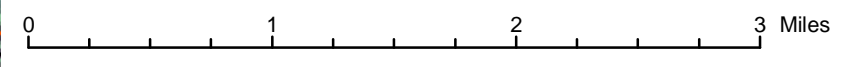
SNF CascadeL 09.12 7d
Probability; (Acres); Cumulative Acres

- 80-100%; (5,549); 5,549 acres
- 60-79%; (1,273); 6,822 acres
- 40-59%; (1,570); 8,392 acres
- 20-39%; (2,674); 11,066 acres
- 5-19%; (5,340); 16,406 acres
- 0.2-4.9%; (11,660); 28,066 acres
- <0.2%; (0); 28,066 acres

09/12 est FSPRO Perim

Ownership

- National Forest
- Non-National Forest
- Existing Wilderness
- 1980-2007 Fires (>100 ac)
- Highways
- Major Roads
- Other Roads



1:50,000

For more information about WFDSS:
http://wfdss.usgs.gov/wfdss/wfdss_home.html

R5 FAM
Fire Behavior Branch, Predictive Services
McClellan, CA

with support from:
WFDSS
Wildland Fire
Decision Support System

RMRS
Rocky Mtn. Research Station
Note: Projection based on preliminary data