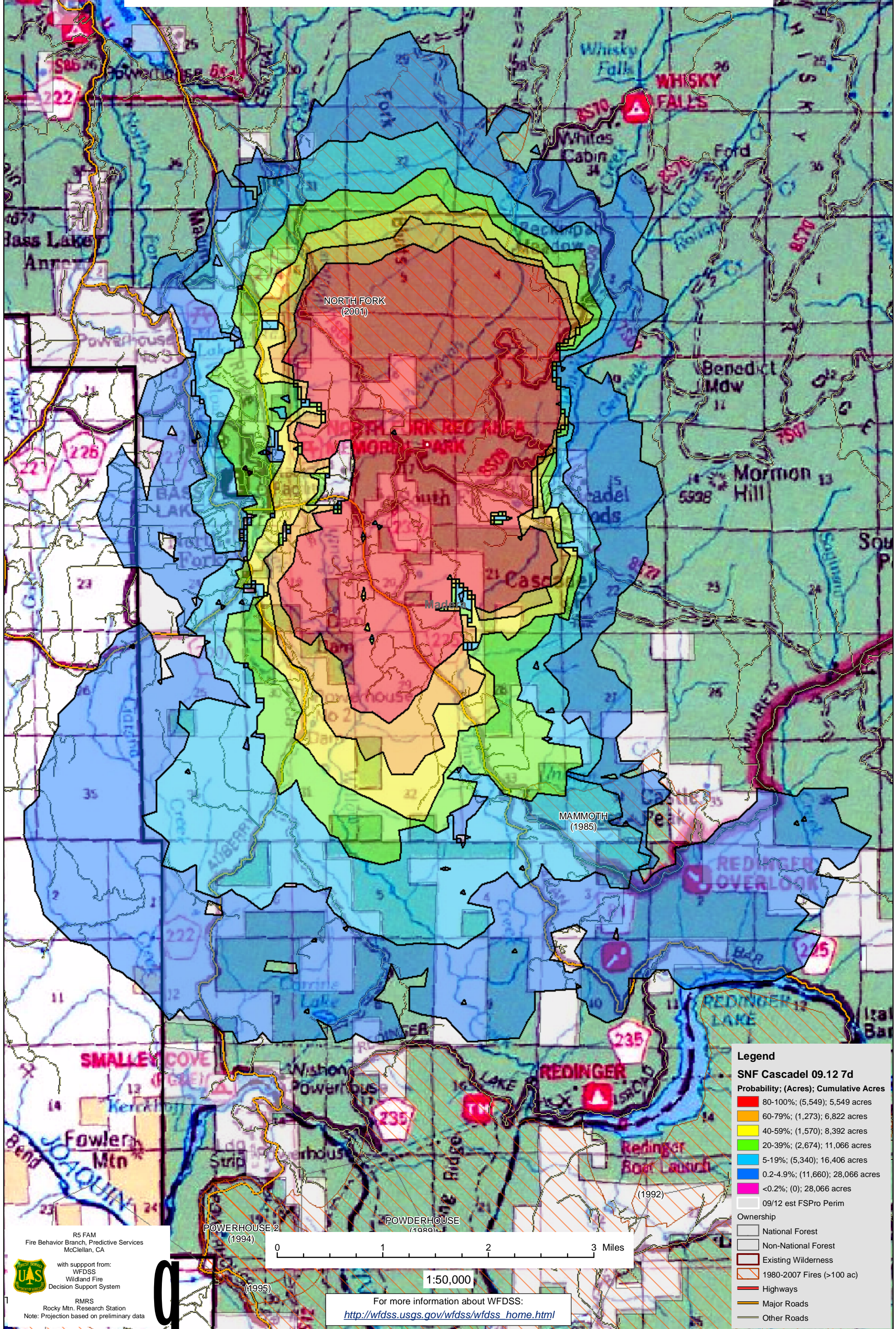


WFDSS - FSPRO PROBABILITY: SNF CASCADEL FIRE (2008)
09/12 - 7 DAYS - 60m Res; 250 Fire Sim; ERC: Northfork WINDS: Northfork;
File: Calibration_2; Analyst: Berni Bahro



Legend

SNF CascadeL 09.12 7d

Probability; (Acres); Cumulative Acres

80-100%	(5,549)	5,549 acres
60-79%	(1,273)	6,822 acres
40-59%	(1,570)	8,392 acres
20-39%	(2,674)	11,066 acres
5-19%	(5,340)	16,406 acres
0.2-4.9%	(11,660)	28,066 acres
<0.2%	(0)	28,066 acres

09/12 est FSPRO Perim

Ownership

- National Forest
- Non-National Forest
- Existing Wilderness
- 1980-2007 Fires (>100 ac)
- Highways
- Major Roads
- Other Roads

R5 FAM
Fire Behavior Branch, Predictive Services
McClellan, CA

with support from:
WFDSS
Wildland Fire
Decision Support System

RMRS
Rocky Mtn. Research Station
Note: Projection based on preliminary data

For more information about WFDSS:
http://wfdss.usgs.gov/wfdss/wfdss_home.html