

121°31'30"W

121°30'0"W

121°28'30"W

121°27'0"W

121°25'30"W

36°3'0"N

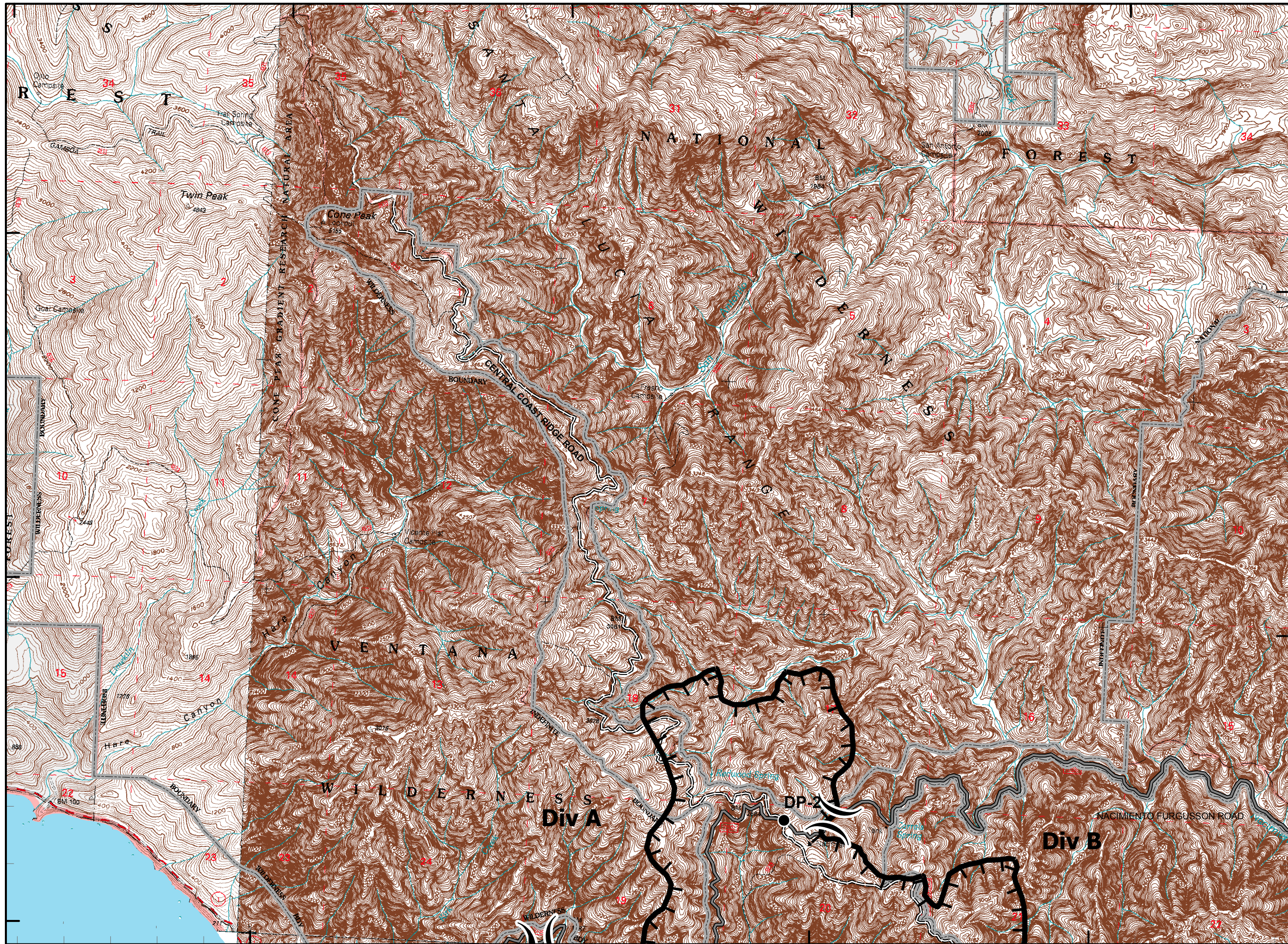
36°1'30"N

36°0'0"N

36°3'0"N

36°1'30"N

36°0'0"N



121°30'0"W

121°28'30"W

121°27'0"W

121°25'30"W

Chalk Fire

CA-LPF-002754
September 29, 2008
Night Operational Period
1800 to 0600



Legend

- Incident Command Post
- Camp
- Staging Area
- Water Source
- Helibase
- Mobil Weather Unit
- Repeater
- Drop Point
- Helispot
- Safety Zone
- Retardant Pickup
- Road Hazard

Division

Branch

Completed Dozer Line

Proposed Dozer Line

Planned Fire Line

Uncontrolled Fire Edge

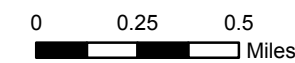
Completed Line

Hand Line

Roads

Trails

Wilderness



Contour Interval 20 feet
Scale: 1:30,000



1